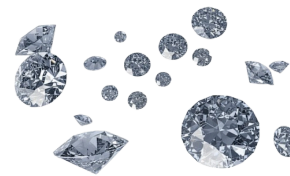




# LAB DIAMONDS UK LTD.

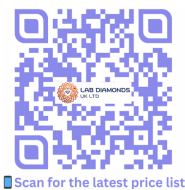


**Office Address :**

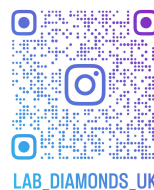
Suite 203

100 Hatton Garden, London EC1N 8NX, UK

Telephone: (+44) 20 4621 0988



Scan for the latest price list



LAB\_DIAMONDS\_UK

PLEASE NOTE : PRICES ARE IN US \$.



## HPHT ROUND PRICE LIST

NOT EARTH-MINED

[sales@labdiauk.com](mailto:sales@labdiauk.com)

[labdiauk.com](http://labdiauk.com)

All sizes available for immediate supply in London

SIEVE SIZE	MM	POINTS	EF VS VG MAKE
.-000	<b>0.8</b>	0.3	198
.+00-000	<b>0.9</b>	0.4	156
.+0-000	<b>1</b>	0.5	146
.+0-1.5	<b>1.1</b>	0.65	114
1.5-2.5	<b>1.2</b>	0.75	102
2.5-3.5	<b>1.3</b>	1	84
3.5-4	<b>1.4</b>	1.25	80
4-5.5	<b>1.5</b>	1.5	72
5.5-6	<b>1.6</b>	1.75	68
6-6.5	<b>1.7</b>	2	66
6.5-7	<b>1.8</b>	2.5	61
7-7.5	<b>1.9</b>	3	58
7.5-8	<b>2</b>	3.5	58
8-8.5	<b>2.1</b>	4	47
8.5-9	<b>2.2</b>	4.5	44
9-9.5	<b>2.3</b>	5	44
9.5-10	<b>2.4</b>	5.5	44
10-10.5	<b>2.5</b>	6	44
10.5-11	<b>2.6</b>	7	41
11-11.5	<b>2.7</b>	8	43
11.5-12	<b>2.8</b>	9	43
12-12.5	<b>2.9</b>	10	50
12.5-13	<b>3</b>	11	50
13-13.5	<b>3.1</b>	12	45
13.5-14	<b>3.2</b>	13	47

SIZE	MM	POINTS	EF VS
1/6 CT	<b>3.3-3.5</b>	14-17	50
1/5 CT	<b>3.6-3.7</b>	18-22	58
1/4 CT	<b>3.8</b>	22	61
1/4 CT	<b>3.9-4</b>	24-26	72
1/4 CT	<b>4.1-4.2</b>	27-28	72
1/3, 3/8 CT	<b>4.3-4.8</b>	30-47	72
45-47 pt	<b>4.9</b>	45-47	73
1/2 CT	<b>5.0-5.1</b>	48-55	74
1/2, 5/8 CT	<b>5.2-5.5</b>	56-67	73
3/4, 80 PT	<b>5.6-6</b>	69-87	79
90 PT	<b>6.1</b>	90	84
95 PT	<b>6.2</b>	95	84
1 CT	<b>6.3-6.5</b>	1.0-1.1	91
1.25 CT	<b>6.6-7</b>	1.11-1.49	91

NOTES: ALL PRICES ARE PER CARAT

PRICES ARE SUBJECT TO CHANGES

CONTACT US FOR: 1) SPECIAL PRICES FOR QUANTITY BUSINESS

Updated: 06-03-2026



# LAB DIAMONDS UK LTD.



PLEASE NOTE : PRICES ARE IN US \$.



Scan for the latest price list

LAB\_DIAMONDS\_UK

Office Address :  
Suite 203  
100 Hatton Garden, London EC1N 8NX, UK  
Telephone : (+44) 20 4621 0988

## FANCY CUT HPHT/CVD PRICE LIST

LAB GROWN DIAMONDS FOR SPECIAL ORDER LAYOUTS

sales@labdiauk.com

labdiauk.com

All highlighted sizes are available for immediate supply in London

### OVAL



RATIO 1.40.

### PRINCESS



### MARQUISE



RATIO 1.85-2.00.

### EMERALD



RATIO 1.40.

Indicative MM	POINTER	Price/Ct
3 x 2	5 pt	125
3.7 x 2.7	10 pt	100
4.3 x 3	15 pt	100
4.7 x 3.4	20 pt	100
5 x 3.6	25 pt	100
5.3 x 3.8	30 pt	100
5.6 x 4	35 pt	100
5.8 x 4.2	40 pt	100
6 x 4.3	45 pt	100
6.3 x 4.5	50 pt	100
6.6 x 4.8	60 pt	100
7 x 5	70 pt	100
7.4 x 5.2	80 pt	100
7.6 x 5.4	90 pt	100
7.9 x 5.6	1 ct	110
9 x 6.5	1.50 ct	115
	2.00 ct	125
5 x 3	22 pt	100
4 x 3	14-15 pt	100

Indicative MM	POINTER	Price/Ct
1.5	2-3 pt	140
2	5 pt	95
2.5	10 pt	95
2.65	12 pt	95
2.9	15 pt	100
3	17 pt	100
3.2	20 pt	100
3.4	25 pt	100
3.6	30 pt	100
3.85	35 pt	100
4	40 pt	100
4.2	45 pt	100
4.35	50 pt	100
4.6	60 pt	100
4.8	70 pt	100
5.05	80 pt	100
5.25	90 pt	100
5.45	1 ct	105
5.9	1.25 ct	105
6.25	1.50 ct	115

Indicative MM	POINTER	Price/Ct
3 x 1.5	4 pt	130
4 x 2	7 pt	115
4.7 x 2.5	10 pt	115
5 x 2.5	12 pt	115
5.5 x 2.9	15 pt	115
6 x 3	19 pt	115
6 x 3.2	21 pt	115
6.3 x 3.4	25 pt	115
6.7 x 3.6	30 pt	115
7.1 x 3.8	35 pt	115
7.6 x 4.1	40 pt	115
8 x 4.2	45 pt	115
8.3 x 4.3	50 pt	115
8.6 x 4.5	60 pt	115
9.2 x 4.8	70 pt	115
9.4 x 4.9	80 pt	115
9.6 x 5.1	90 pt	115
10 x 5.3	1 ct	115
10.9 x 5.6	1.25 ct	115

Indicative MM	POINTER	Price/Ct
2.5 x 1.8	5 pt	120
3 x 2	8 PT	95
3.2 X 2.2	10 PT	100
3.5 x 2.5	15 pt	100
3.6 X 2.6	17 PT	100
3.8 X 2.6	20 pt	100
4 X 3	25 pt	100
4.4 x 3.2	30 pt	100
4.6 X 3.2	35 pt	100
4.6 X 3.4	37 PT	100
5 x 3	30 pt	100
5 x 3.5	40 pt	100
5.2 x 3.4	45 pt	100
5 X 4	50 pt	100
5.4 x 3.8	50 pt	100
5.6 x 4	60 pt	100
6 x 4	70 pt	100
6 X 4.2	72 PT	100
6.2 x 4.4	80 pt	100
6.4 x 4.6	1 CT	105
6.8 X 4.8	1.15 CT	105
7.5 x 5.3	1.50 ct	110
	2 ct	115

### PEAR



RATIO 1.45-1.60. ASK PRICE FOR DIFF. RATIO

Indicative MM	POINTER	Price/Ct
2.7 x 1.8	4 PT	155
3 x 2	5 PT	125
4 x 2.5	10 pt	100
4 x 3	13 PT	100
4.5 x 3	16 PT	100
5 x 3	18 PT	100
5 x 3.2	20 PT	100
5 X 3.5	25 pt	100
5.2 X 3.4	25 pt	100
5.6 X 3.6	30 pt	100
6 X 4	35 pt	100
6.4 X 4	40 pt	100
6.6 x 4.2	45 pt	100
6.8 x 4.4	50 pt	100
7 X 4.5	55 PT	100
7.2 x 4.6	60 pt	100
7.4 x 4.8	70 pt	100
7.6 x 5	75 pt	100
7.8 x 5.2	80 pt	100
8.2 x 5.4	90 pt	100
8.4 x 5.6	1 ct	105
	1.25 ct	105
	1.50 ct	115
	2 ct	130

### RADIANT



RATIO 1.40. ASK PRICE FOR DIFFERENT RATIO

Indicative MM	POINTER	Price/Ct
3 x 2	8 pt	105
3.1 x 2.2	10 pt	100
3.5 x 2.5	15 pt	100
4 x 2.8	20 pt	100
4.2 x 3	25 pt	100
4.5 x 3.2	30 pt	100
4.7 x 3.4	35 pt	100
5 x 3.6	40 pt	100
5.1 x 3.6	45 pt	100
5.4 x 3.8	50 pt	100
5.6 x 4	60 pt	100
6 x 4.3	70 pt	100
6.15 x 4.4	80 pt	100
6.45 x 4.6	90 pt	100
6.65 x 4.8	1 ct	105
	1.50 ct	115
	2 ct	125

### HEART



RATIO 1.10-1.15.

Indicative MM	POINTER	Price/Ct
3.2 x 3	10 pt	160
3.6 x 3.3	15 pt	120
4.1 x 3.7	20 pt	115
4.4 x 3.9	25 pt	115
4.6 x 4.2	30 pt	115
4.9 x 4.4	35 pt	115
5.1 x 4.6	40 pt	115
5.3 x 4.8	45 pt	115
5.5 x 5	50 pt	115
5.7 x 5.2	60 pt	115
6.2 x 5.6	70 pt	115
6.5 x 5.8	80 pt	115
6.6 x 6	90 pt	115
6.2 x 6.9	1 ct	125
7 x 7.7	1.50 ct	140
	2 ct	145

### CUSHION



Indicative MM	POINTER	Price/Ct
2.5 - 2.7	5 pt	115
2.8 - 2.9	10 pt	100
3.0 - 3.1	14-17 pt	100
3.3 - 3.5	18-22 pt	100
3.6 - 3.7	23-29 pt	100
3.8 - 3.9	30-33 pt	100
4.0 - 4.1	34-38 pt	100
4.2 - 4.3	39-43 pt	100
4.4 - 4.5	44-48 pt	100
4.6 - 4.7	49-58 pt	100
4.8 - 4.9	59-69 pt	100
5.0 - 5.2	70-79 pt	100
5.3 - 5.4	80-89 pt	100
5.5 - 5.6	90 pt	100
5.7 - 5.8	1 ct	100
6.2	1.50 CT	110
	2 CT	125

NOTE: Layout orders have tolerance level of +/- 0.1mm

\*\* Price are based on weight and Measurement of the stone



# LAB DIAMONDS UK LTD.



PLEASE NOTE : PRICES ARE IN US \$.



Scan for the latest price list

LAB\_DIAMONDS\_UK

## FANCY CUT HPHT/CVD PRICE LIST

LAB GROWN DIAMONDS FOR SPECIAL ORDER LAYOUTS

sales@labdiauk.com

Labdiauk.com

All highlighted sizes are available for immediate supply in London

### STRAIGHT BAGUETTE



.1 MM +/- TOLERANCE

Indicative MM	POINTER	Price/Ct
2 x 1	2 pt	120
2.5 x 1.3	3 pt	115
2.5 x 1.5	4 pt	115
3 x 1.5	5 pt	100
3 x 2	7 pt	100
3.5 x 2	10 pt	100
4 x 2	11 pt	100
4.5 x 2	13 pt	100
4.5 x 2.5	15 pt	100
5 x 2	17 pt	100
5 x 2.5	20 pt	100
5 x 3	30 pt	100
5.5 x 2.5	25 pt	100
5.5 x 2.8	27 pt	100
6 x 3	35 pt	105
6 x 3.5	50 pt	105
6 x 4	58 pt	105
6.5 x 3.5	55 pt	105
7 x 3.5	60 pt	110
7 x 4	70 pt	110
7.5 x 4	75 pt	110
8 x 4	85 pt	110
8.5 x 4.2	1 ct	115
9 x 4	1.05 ct	115
9 x 4.5	1.30 ct	115
9.5 x 4.5	1.40 ct	115
10 x 4.7	1.55 ct	115

### TAPERED BAGUETTE



1 MM +/- TOLERANCE

Indicative MM	POINTER	Price/Ct
2 x 1.5 x 1.1	2 PT	145
2.3 x 1.5 x 1.1	3 PT	140
2.5 x 1.5 x 1.1	3.25 PT	130
2.8 x 1.5 x 1.1	4 PT	130
3 x 1.5 x 1.2	5 pt	110
3 x 1.8 x 1.2	5 PT	110
3 X 2 X 1.5	5.5 PT	110
3.5 x 1.7 x 1.2	6 pt	110
3.5 X 2 X 1.2	7 PT	110
4 x 2 x 1.4	10 pt	110
4 X 3 X 2	12 PT	110
4.5 x 2.3 x 1.8	12 pt	110
4.5 x 2.5 x 1.8	13 pt	110
4.8 X 2.3 X 1.8	14 PT	110
5 X 2 X 1.5	12 PT	110
5 x 2.5 x 1.8	18 PT	110
5 x 3 x 2	24 pt	110
5.5 x 2.8 x 1.8	23 pt	110
5.5 x 3 x 2	26 pt	110
5.8 X 2.5 X 1.5	20 PT	110
6 X 2.5 X 2	22 PT	115
6 x 3 x 2	28 pt	115
6 x 3.5 x 2	36 pt	115
6.5 x 3.3 x 2	36 pt	115
6.5 x 3.5 x 2	40 pt	115

contd on next columns

### TAPERED BAGUETTE



1 MM +/- TOLERANCE

Indicative MM	POINTER	Price/Ct
7 X 2.5 X 2	30 PT	115
7 X 3 X 2	36 PT	115
7 x 3.5 x 2.7	44 pt	115
7 x 4 x 2	55 pt	115
7.5 x 3.6 x 2.7	50 pt	115
8 x 4 x 3	64 pt	115
8 x 4.5 x 3	78 pt	115
8.5 x 4.5 x 3	85 pt	115
8.5 x 5 x 3.5	1.05 ct	125
9 x 4.5 x 3	92 pt	125
9 x 5 x 3.5	1.10 ct	125
9.5 x 5 x 3.5	1.20 ct	125
9.5 x 5.8 x 4	1.55 ct	125

### TRILLION



Indicative MM	POINTER	Price/Ct
2.5 X 2.5	5 PT	185
3 X 3	8 PT	130
3.7 - 3.9	15 pt	130
4.1 - 4.3	20 pt	130
4.4 - 4.6	25 pt	130
4.7 - 4.9	30 pt	130
5.0 - 5.2	35 pt	130
5.3 - 5.4	40 pt	130
5.5 - 5.6	45 pt	130
5.7 - 5.9	50 pt	130
6.0 - 6.3	60 pt	130
6.4 - 6.7	70 pt	130
6.8	80 pt	130
6.9	90 pt	140
7 - 7.1	1 ct	160
7.2	1.25 ct	175
7.6	1.50 ct	215

### ASSCHER



Indicative MM	POINTER	Price/Ct
2.6	10 pt	100
3	15 pt	100
3.3	20 pt	100
3.4	25 pt	100
3.5	27 PT	100
3.7	30 pt	100
3.85	35 pt	100
4	40 pt	100
4.2	45 pt	100
4.4	50 pt	100
4.7	60 pt	100
5	70 pt	100
5.2	80 pt	100
5.5	90 pt	100
5.6-5.7	1 ct	105
6.1	1.25 ct	105
6.5	1.50 ct	115
	2 CT	115

### CARRE CUT



Indicative MM	POINTER	Price/Ct
2.5	10 pt	105
2.85	15 pt	105
3.2	20 pt	105
3.4	25 pt	105
3.6	30 pt	105
3.85	35 pt	105
4	40 pt	105
4.2	45 pt	105
4.35	50 pt	105
4.6	60 pt	105
4.8	70 pt	105
5.05	80 pt	105
5.25	90 pt	105
5.45	1 ct	105

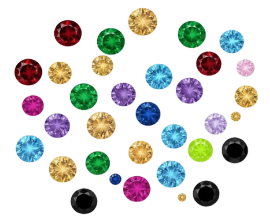
Updated: 06-03-2026

NOTE: Layout orders have tolerance level of +/- 0.1mm

\*\* Price are based on weight and length of the stone



# LAB DIAMONDS UK LTD.

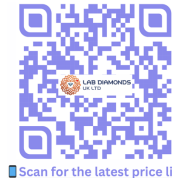


Office Address :  
 Suite 203  
 100 Hatton Garden, London EC1N 8NX, UK  
 Telephone : (+44) 20 4621 0988

PLEASE NOTE : PRICES ARE IN US \$.

## COLOR-ROUND DIAMONDS PRICE LIST

NOT EARTH-MINED



Scan for the latest price list



LAB\_DIAMONDS\_UK

sales@labdiauk.com

labdiauk.com

Available on order

SIEVE SIZE	MM	POINTS	PINK	YELLOW	BLUE	GREEN	PURPLE	RED / CHAMPAGNE	BLACK
.-00	<b>0.8-0.9</b>	.3-.45	550	510	370	355	550	430	140
.+0-00	<b>1</b>	0.5	520	485	335	320	520	400	139
.+0-1	<b>1.1</b>	0.65	470	445	300	320	470	340	123
.+1-2	<b>1.2</b>	0.75	470	445	300	320	470	340	123
.+2-3.5	<b>1.3</b>	1	335	240	170	285	335	195	101
3.5-4.5	<b>1.4</b>	1.25	335	240	170	285	335	195	101
4.5-5.5	<b>1.5</b>	1.5	335	240	170	285	335	195	101
5.5-6	<b>1.6</b>	1.75	335	240	170	285	335	195	101
6-6.5	<b>1.7</b>	2	335	240	170	285	335	195	101
6.5-7	<b>1.8</b>	2.5	335	240	170	245	335	195	71
7-7.5	<b>1.9</b>	3	335	240	170	245	335	195	71
7.5-8	<b>2</b>	3.5	335	240	170	245	335	195	71
8-8.5	<b>2.1</b>	4	335	240	170	245	335	195	71
8.5-9	<b>2.2</b>	4.5	335	240	170	245	335	195	71
9-9.5	<b>2.3</b>	5	335	240	170	245	335	195	71
9.5-10	<b>2.4</b>	5.5	335	240	170	245	335	195	71
10-10.5	<b>2.5</b>	6	335	240	170	245	335	195	71
10.5-11	<b>2.6</b>	7	335	240	170	245	335	195	71
11-11.5	<b>2.7</b>	8	230	200	145	200	230	195	53
11.5-12	<b>2.8</b>	9	230	200	145	200	230	195	53
12-12.5	<b>2.9</b>	10	230	200	145	200	230	195	53
12.5-13	<b>3</b>	11	230	200	145	200	230	195	53
13-13.5	<b>3.1</b>	12	230	200	145	200	230	195	53
13.5-14	<b>3.2</b>	13	230	200	145	200	230	195	53

SIEVE SIZE	MM	POINTS	PINK	YELLOW	BLUE	GREEN	PURPLE	RED / CHAMPAGNE	BLACK
14-15.5	<b>3.3-3.4</b>	14-17 PT	230	200	145	200	230	195	53
18-22	<b>3.5-3.7</b>	20 PT	230	215	145	200	230	195	53
23-28	<b>3.8-4.1</b>	25 PT	230	215	145	200	230	195	59
29-33	<b>4.2-4.4</b>	30 PT	230	215	145	200	230	195	59
34-38	<b>4.5-4.6</b>	35 PT	230	215	145	200	230	195	59
39-43	<b>4.6-4.7</b>	40 PT	230	215	145	200	230	195	59
44-48	<b>4.7-4.8</b>	45 PT	230	215	145	200	230	195	59
49-58	<b>4.9-5.3</b>	50 PT	230	215	145	200	230	195	55
59-69	<b>5.4-5.5</b>	60 PT	230	215	145	200	230	195	61
70-79	<b>5.75</b>	70 PT	230	215	145	200	230	195	61
80-89	<b>5.85</b>	80 PT	230	215	145	200	230	195	61
90-96	<b>6</b>	90 PT	230	215	145	200	230	195	61

NOTES: ALL PRICES ARE PER CARAT

PRICES ARE SUBJECT TO CHANGES

CONTACT US FOR SPECIAL PRICES FOR QUANTITY BUSINESS

Updated: 06-03-2026