



**INTERNATIONAL
GEMOLOGICAL
INSTITUTE**

ELECTRONIC COPY

LABORATORY GROWN DIAMOND REPORT

LG442065832

**IGI LABORATORY GROWN
DIAMOND ID REPORT**

10/06/2020

IGI Report Number **LG442065832**

PRINCESS CUT

5.44 x 5.30 x 3.71 MM

Carat Weight 0.95 CARAT

Color Grade G

Clarity Grade SI 1

Polish EXCELLENT

Symmetry VERY GOOD

Fluorescence NONE

Inscription(s) LABGROWN IGI
LG442065832

Comments: This Laboratory grown diamond was created by chemical vapor deposition process (CVD)

Type IIa

IGI GEMOLOGICAL REPORT

IGI LABORATORY GROWN DIAMOND IDENTIFICATION REPORT

10/06/2020

IGI Report Number LG442065832

Shape and Cutting Style PRINCESS CUT

Measurements 5.44 x 5.30 x 3.71 MM

GRADING RESULTS

Carat Weight 0.95 CARAT

Color Grade G

Clarity Grade SI 1

ADDITIONAL GRADING INFORMATION

Polish EXCELLENT

Symmetry VERY GOOD

Fluorescence NONE

Inscription(s) LABGROWN IGI LG442065832

Comments: This Laboratory grown diamond was created by chemical vapor deposition process (CVD)
Type IIa



This Laboratory Grown Diamond (LGD) described in this Report has been analyzed, graded and Laserscribed® by International Gemological Institute (IGI). A LGD has essentially the chemical, physical and optical properties as a mined diamond, with the exception of being man-made (a manufactured product). LGD's are typically produced by CVD (chemical vapor deposition) or by HPHT (high pressure high temperature) growth processes and may include post growth modifications to change the color. IGI utilizes the most advanced techniques and equipment currently available including binocular microscopes, diamond color masters, non-contact-optical measuring device, a wide range analytical techniques including FTIR, UV-VIS-NIR, raman spectroscopy, and fluorescence analysis at various excitation wavelengths. This Report includes advanced security features. This Report is neither a guarantee, valuation nor appraisal and by making the report IGI does not agree to purchase or replace the article.

INTERNATIONAL GEMOLOGICAL INSTITUTE, INC.

ADDITIONAL INFORMATION

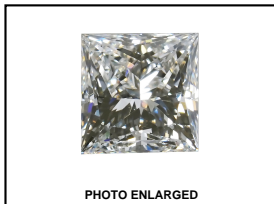
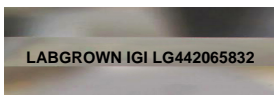
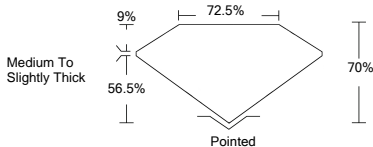


PHOTO ENLARGED



LABGROWN IGI LG442065832

LASERSCRIBE SM



**IGI LABORATORY GROWN
DIAMOND ID REPORT**

10/06/2020

IGI Report Number **LG442065832**

PRINCESS CUT

5.44 x 5.30 x 3.71 MM

Carat Weight 0.95 CARAT

Color Grade G

Clarity Grade SI 1

Polish EXCELLENT

Symmetry VERY GOOD

Fluorescence NONE

Inscription(s) LABGROWN IGI
LG442065832

Comments: This Laboratory grown diamond was created by chemical vapor deposition process (CVD)

Type IIa



THE DOCUMENT WAS PRODUCED THE FOLLOWING SECURITY MEASURES: SPECIAL DOCUMENT PAPER, INK SCREENS, WATERMARK BACKGROUND DESIGNS HOLOGRAM AND OTHER SECURITY FEATURES NOT LISTED AND DO EXCEED DOCUMENT SECURITY INDUSTRY DUDLINES

For Terms & Conditions, please visit www.igi.org