



407954104

DIAMOND REPORT **ELECTRONIC COPY**

April 5, 2022
 IGI Report Number 407954104
 Description NATURAL DIAMOND
 Shape and Cutting Style ROUND BRILLIANT
 Measurements 6.85 - 6.92 x 4.20 mm

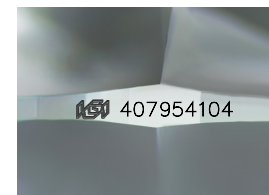
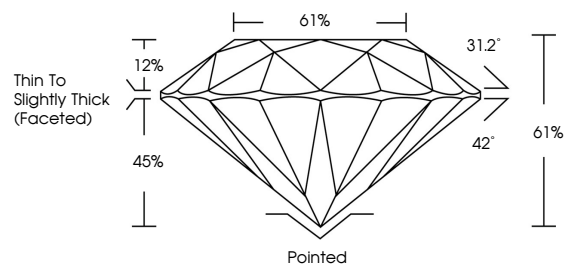
GRADING RESULTS

Carat Weight 1.21 CARAT
 Color Grade M
 Clarity Grade VS 2
 Cut Grade VERY GOOD

ADDITIONAL GRADING INFORMATION

Polish EXCELLENT
 Symmetry VERY GOOD
 Fluorescence VERY SLIGHT
 Inscription(s) IGI 407954104

PROPORTIONS



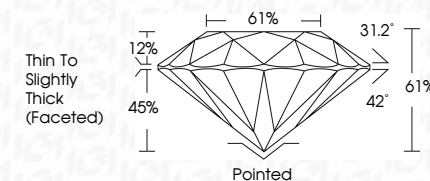
Sample Image Used



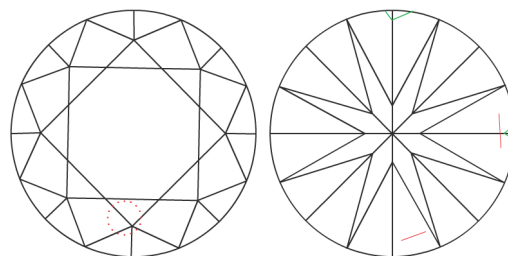
April 5, 2022
 IGI Report Number 407954104
 Description NATURAL DIAMOND
 Shape and Cutting Style ROUND BRILLIANT
 Measurements 6.85 - 6.92 x 4.20 mm

GRADING RESULTS

Carat Weight 1.21 CARAT
 Color Grade M
 Clarity Grade VS 2
 Cut Grade VERY GOOD



CLARITY CHARACTERISTICS



KEY TO SYMBOLS

Red symbols indicate internal characteristics.
 Green symbols indicate external characteristics.

COLOR

D - F	G - J	K - M	N - R	S - Z	FANCY
Colorless	Near Colorless	Slightly Tinted	Very Light Color	Light Color	

CLARITY

IF	VVS ¹⁻²	VS ¹⁻²	SI ¹⁻²	I ¹⁻³
Internally Flawless	Very Very Slightly Included	Very Slightly Included	Slightly Included	Included

ADDITIONAL GRADING INFORMATION

Polish EXCELLENT
 Symmetry VERY GOOD
 Fluorescence VERY SLIGHT
 Inscription(s) IGI 407954104



IGI

April 5, 2022
 IGI Report No. 407954104
 NATURAL DIAMOND
 ROUND BRILLIANT
 6.85 - 6.92 x 4.20 mm
 Carat Weight 1.21 CARAT
 Color Grade M
 Clarity Grade VS2
 Cut Grade VERY GOOD
 Depth 61%
 Table 61%
 Girdle Thin To Slightly Thick (Faceted)
 Culet Pointed
 Polish EXCELLENT
 Symmetry VERY GOOD
 Fluorescence VERY SLIGHT
 Inscription(s) IGI 407954104