



407954118

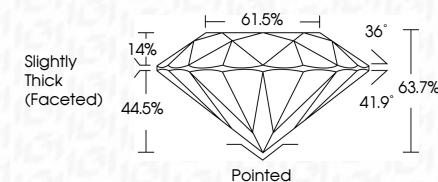
DIAMOND REPORT **ELECTRONIC COPY**



December 16, 2022
IGI Report Number 407954118
Description NATURAL DIAMOND
Shape and Cutting Style ROUND BRILLIANT
Measurements 6.54 - 6.59 x 4.18 mm

GRADING RESULTS

Carat Weight 1.15 CARAT
Color Grade J
Clarity Grade I1
Cut Grade EXCELLENT



December 16, 2022
IGI Report Number 407954118
Description NATURAL DIAMOND
Shape and Cutting Style ROUND BRILLIANT
Measurements 6.54 - 6.59 x 4.18 mm

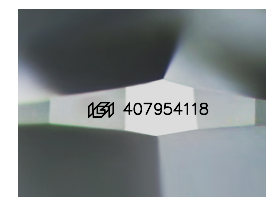
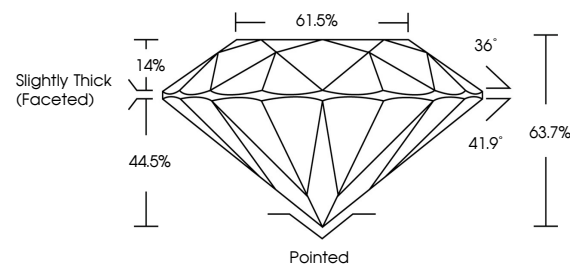
GRADING RESULTS

Carat Weight 1.15 CARAT
Color Grade J
Clarity Grade I1
Cut Grade EXCELLENT

ADDITIONAL GRADING INFORMATION

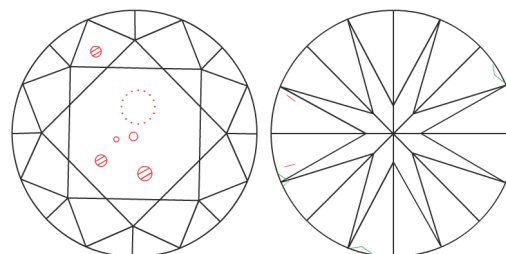
Polish EXCELLENT
Symmetry EXCELLENT
Fluorescence VERY SLIGHT
Inscription(s) IGI 407954118

PROPORTIONS



Sample Image Used

CLARITY CHARACTERISTICS



KEY TO SYMBOLS

Red symbols indicate internal characteristics.
Green symbols indicate external characteristics.

COLOR

D - F	G - J	K - M	N - R	S - Z	FANCY
Colorless	Near Colorless	Slightly Tinted	Very Light Color	Light Color	

CLARITY

IF	VVS ¹⁻²	VS ¹⁻²	SI ¹⁻²	I ¹⁻³
Internally Flawless	Very Very Slightly Included	Very Slightly Included	Slightly Included	Included

ADDITIONAL GRADING INFORMATION

Polish EXCELLENT
Symmetry EXCELLENT
Fluorescence VERY SLIGHT
Inscription(s) IGI 407954118



IGI



December 16, 2022
IGI Report No. 407954118
NATURAL DIAMOND
ROUND BRILLIANT
6.54 - 6.59 x 4.18 mm
Carat Weight 1.15 CARAT
Color Grade J
Clarity Grade I1
Cut Grade EXCELLENT
Depth 63.7%
Table 61.5%
Girdle Slightly Thick (Faceted)
Culet Pointed
Polish EXCELLENT
Symmetry EXCELLENT
Fluorescence VERY SLIGHT
Inscription(s) IGI 407954118

