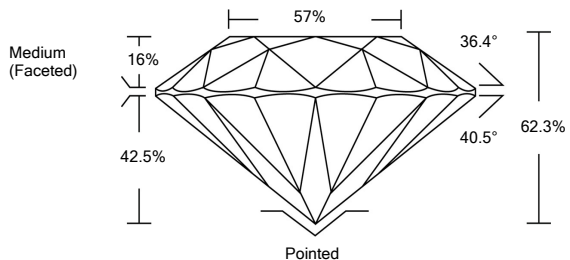




LG474113555

LABORATORY GROWN DIAMOND REPORT

PROPORTIONS

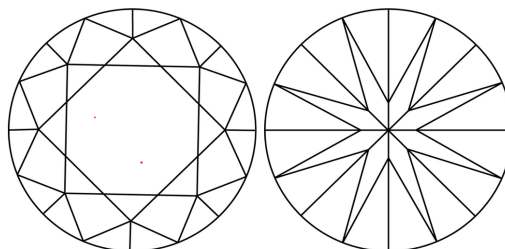


GRADING SCALES

Table with 5 columns for Color Grading Scale (CL to LT) and Clarity (10x) Grading Scale (FL to I).

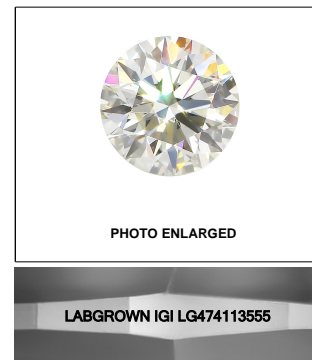
The laboratory grown diamond described in this Report (Report) has been graded, tested, analyzed, examined and/or inscribed by International Gemological Institute (IGI)...

CLARITY CHARACTERISTICS



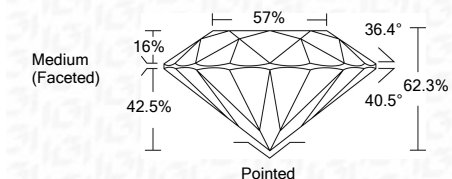
KEY TO SYMBOLS

Red symbols indicate internal characteristics. Green symbols indicate external characteristics.



LASERSCRIBESM

04/27/2021 IGI Report Number LG474113555 Shape and Cutting Style ROUND BRILLIANT Measurements 8.01 - 8.03 x 5.00 mm GRADING RESULTS Carat Weight 2.00 CARATS Color Grade J Clarity Grade VVS 2 Cut Grade EXCELLENT



ADDITIONAL GRADING INFORMATION

Polish EXCELLENT Symmetry EXCELLENT Fluorescence NONE Inscription(s) LABGROWN IGI LG474113555

Comments: This Laboratory Grown Diamond was created by Chemical Vapor Deposition (CVD) growth process and may include post-growth treatment. Type IIa



IGI

04/27/2021 IGI Report No. LG474113555 ROUND BRILLIANT 8.01 - 8.03 x 5.00 mm 2.00 CARATS J VVS 2 EXCELLENT 62.3% 57% Medium (Faceted) Pointed EXCELLENT EXCELLENT NONE LABGROWN IGI LG474113555

