



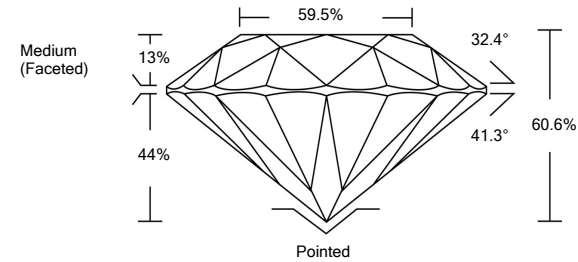
| | |
|--------------------------------|--------------------------|
| 07/20/2021 | |
| IGI Report Number | LG487174153 |
| Shape and Cutting Style | ROUND BRILLIANT |
| Measurements | 6.51 - 6.55 x 3.95 mm |
| GRADING RESULTS | |
| Carat Weight | 1.03 CARAT |
| Color Grade | I |
| Clarity Grade | VVS 2 |
| Cut Grade | EXCELLENT |
| ADDITIONAL GRADING INFORMATION | |
| Polish | EXCELLENT |
| Symmetry | EXCELLENT |
| Fluorescence | NONE |
| Inscription(s) | LABGROWN IGI LG487174153 |

Comments: This Laboratory Grown Diamond was created by Chemical Vapor Deposition (CVD) growth process and may include post-growth treatment.
Type IIa

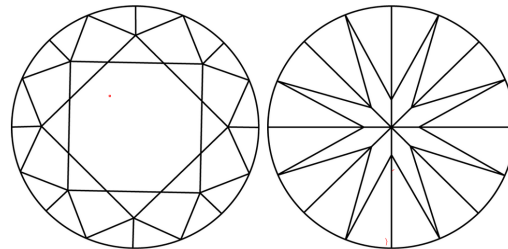
ELECTRONIC COPY

LG487174153

PROPORTIONS



CLARITY CHARACTERISTICS



KEY TO SYMBOLS

Red symbols indicate internal characteristics.
Green symbols indicate external characteristics.

LABORATORY GROWN
DIAMOND REPORT

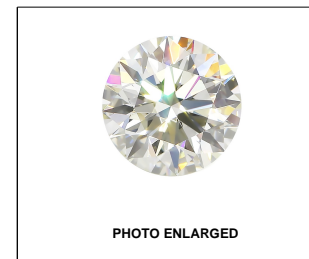
GRADING SCALES

| | | | | | | | | | | |
|-----------------------------|------------------------------|--|-----------------------------|--|------------------------|--|-------------------|--|-----------|--|
| COLOR GRADING SCALE | CL | | NC | | FT | | VLT | | LT | |
| | COLORLESS D-F | | NEAR COLORLESS G-J | | FAINT K-M | | VERY LIGHT N-R | | LIGHT S-Z | |
| CLARITY (10x) GRADING SCALE | FL IF | | VVS | | VS | | SI | | I | |
| | FLAWLESS INTERNALLY FLAWLESS | | VERY VERY SLIGHTLY INCLUDED | | VERY SLIGHTLY INCLUDED | | SLIGHTLY INCLUDED | | INCLUDED | |

The laboratory grown diamond described in this Report ("Report") has been graded, tested, analyzed, examined and/or inscribed by International Gemological Institute (IGI). A laboratory grown diamond is one that has essentially the same chemical, physical and optical properties as a natural diamond. IGI is a gemological laboratory owned by a man (a manufactured product). IGI employs and utilizes those techniques and equipment currently available to IGI, including, without limitation, 10X magnification, corrected triplet loupe, binocular microscope, master color comparison stones, non-contact-optical interferometer, diamond detector, ultraviolet light, and other instruments and/or processes as deemed appropriate by IGI. This Report includes advanced security features. A duly accredited gemologist or jeweler can advise you with respect to the importance of and interrelationship between cut, color, clarity and carat weight.

THIS REPORT IS NEITHER A GUARANTEE, VALUATION, NOR APPRAISAL OF THE GEMSTONE DESCRIBED HEREIN. PLEASE REVIEW THE LIMITATIONS AND RESTRICTIONS SET FORTH ONLINE. FOR THE FULL IGI REPORT, INCLUDING THE LIMITATIONS AND DISCLAIMERS, PLEASE GO TO WWW.IGI.ORG OR CALL 1-888-BUY-IGI.

© INTERNATIONAL GEMOLOGICAL INSTITUTE, INC.



LABGROWN IGI LG487174153

LASERSCRIBESM

© IGI 2020, International Gemological Institute

FD - 10 20



THIS DOCUMENT WAS PRODUCED WITH THE FOLLOWING SECURITY MEASURES: SPECIAL DOCUMENT PAPER, INK SCREENS, WATERMARK, BACKGROUND DESIGNS, HOLOGRAM AND OTHER SECURITY FEATURES NOT LISTED AND DO EXCEED DOCUMENT SECURITY INDUSTRY GUIDELINES

LABORATORY GROWN DIAMOND REPORT

07/20/2021

IGI Report Number **LG487174153**Shape and Cutting Style **ROUND BRILLIANT**

| | |
|--------------|-----------------------|
| Measurements | 6.51 - 6.55 x 3.95 mm |
|--------------|-----------------------|

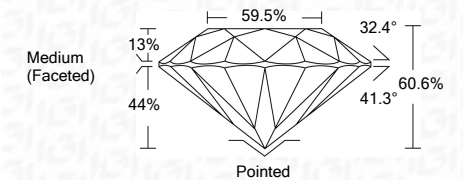
GRADING RESULTS

Carat Weight **1.03 CARAT**

Color Grade I

| | |
|---------------|-------|
| Clarity Grade | VVS 2 |
|---------------|-------|

Cut Grade **EXCELLENT**



ADDITIONAL GRADING INFORMATION

Polish **EXCELLENT**

Symmetry **EXCELLENT**

Fluorescence **NONE**

Inscription(s) **LABGROWN IGI LG487174153**

Comments: This Laboratory Grown Diamond was created by Chemical Vapor Deposition (CVD) growth process and may include post-growth treatment.
Type IIa



IGI

| | | |
|------------|--------------------------------|---|
| 07/20/2021 | IGI Report No. LG487174153 | |
| | ROUND BRILLIANT | |
| | 0.851 - 0.852 x 5.98 mm | |
| | Carat Weight | 1.03 CARAT |
| | Color Grade | I |
| | Clarity Grade | VVS 2 |
| | Cut Grade | EXCELLENT |
| | Depth | 60.6% |
| | Table | 59.5% |
| | Girdle | Medium (Feathered) |
| | Culet | Pointed |
| | Polish | EXCELLENT |
| | Symmetry | EXCELLENT |
| | Fluorescence | NONE |
| | Inscriptions | LABGROWN IGI LG487174153 |
| | Comments: | This Laboratory Grown Diamond was checked by Chemical Vapor Deposition technology and may include post-growth treatment. Type Iia |