



ELECTRONIC COPY

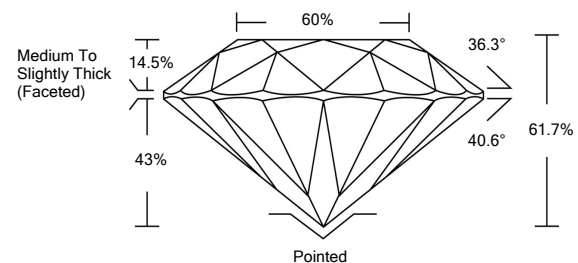
LABORATORY GROWN DIAMOND REPORT

March 2, 2022	
IGI Report Number	LG516276492
Description	LABORATORY GROWN DIAMOND
Shape and Cutting Style	ROUND BRILLIANT
Measurements	6.71 - 6.74 X 4.16 MM
GRADING RESULTS	
Carat Weight	1.18 CARAT
Color Grade	D
Clarity Grade	VVS 2
Cut Grade	EXCELLENT
ADDITIONAL GRADING INFORMATION	
Polish	EXCELLENT
Symmetry	EXCELLENT
Fluorescence	NONE
Inscription(s)	LABGROWN IGI LG516276492

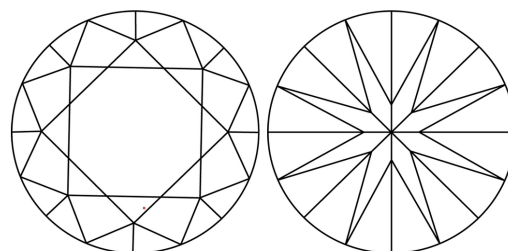
Comments: As Grown - No indication of post-growth treatment.
This Laboratory Grown Diamond was created by High Pressure High Temperature (HPHT) growth process.
Type II

LG516276492

PROPORTIONS



CLARITY CHARACTERISTICS

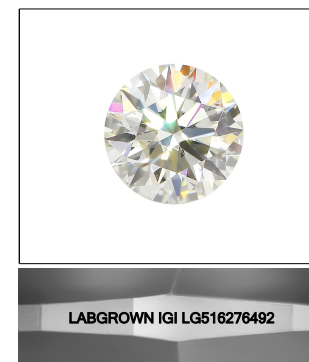


KEY TO SYMBOLS

Red symbols indicate internal characteristics.
Green symbols indicate external characteristics.

GRADING SCALES

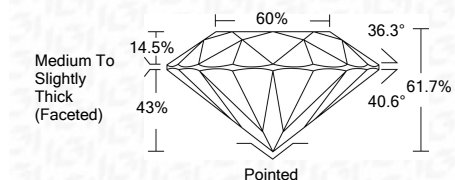
COLOR GRADING SCALE	CL	NC	FT	VL	LT	
	COLORLESS D-F	NEAR COLORLESS G-J	FAINT K-M	VERY LIGHT N-R	LIGHT S-Z	
CLARITY (10x) GRADING SCALE	FL	IF	VVS	VS	SI	I
	FLAWLESS INTERNALLY FLAWLESS	VERY VERY SLIGHTLY INCLUDED	VERY SLIGHTLY INCLUDED	SLIGHTLY INCLUDED	INCLUDED	



LASERSCRIBESM

Sample Image Used

March 2, 2022	
IGI Report Number	LG516276492
Description	LABORATORY GROWN DIAMOND
Shape and Cutting Style	ROUND BRILLIANT
Measurements	6.71 - 6.74 X 4.16 MM
GRADING RESULTS	
Carat Weight	1.18 CARAT
Color Grade	D
Clarity Grade	VVS 2
Cut Grade	EXCELLENT



ADDITIONAL GRADING INFORMATION	
Polish	EXCELLENT
Symmetry	EXCELLENT
Fluorescence	NONE
Inscription(s)	LABGROWN IGI LG516276492

Comments: As Grown - No indication of post-growth treatment.
This Laboratory Grown Diamond was created by High Pressure High Temperature (HPHT) growth process.
Type II



IGI

March 2, 2022	
IGI Report No. LG516276492	
ROUND BRILLIANT	
6.71 - 6.74 X 4.16 MM	
Carat Weight	1.18 CARAT
Color Grade	D
Clarity Grade	VVS 2
Cut Grade	EXCELLENT
Depth	61.7%
Table	60%
Girdle	Medium To Slightly Thick (Faceted)
Culet	Pointed
Polish	EXCELLENT
Symmetry	EXCELLENT
Fluorescence	NONE
Inscription(s)	LABGROWN IGI LG516276492
Comments: As Grown - No indication of post-growth treatment. This Laboratory Grown Diamond was created by High Pressure High Temperature (HPHT) growth process. Type II	