



ELECTRONIC COPY

LABORATORY GROWN DIAMOND REPORT

May 23, 2022
 IGI Report Number **LG529281165**
 Description **LABORATORY GROWN
DIAMOND**
 Shape and Cutting Style **ROUND BRILLIANT**
 Measurements **7.07 - 7.11 X 4.30 MM**

GRADING RESULTS

Carat Weight **1.31 CARAT**
 Color Grade **G**
 Clarity Grade **VS 1**
 Cut Grade **IDEAL**

ADDITIONAL GRADING INFORMATION

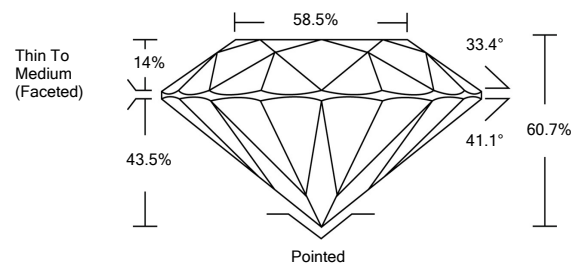
Polish **EXCELLENT**
 Symmetry **EXCELLENT**
 Fluorescence **NONE**

Inscription(s) **LABGROWN IGI LG529281165**

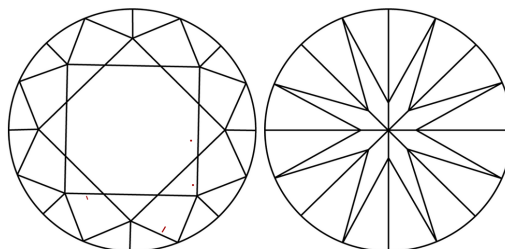
Comments: This Laboratory Grown Diamond was created by Chemical Vapor Deposition (CVD) growth process and may include post-growth treatment.
 Type IIa

LG529281165

PROPORTIONS



CLARITY CHARACTERISTICS

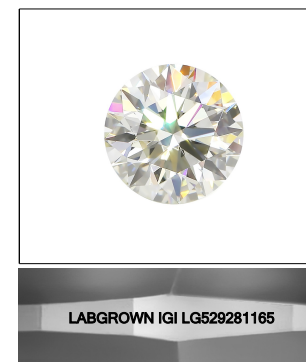


KEY TO SYMBOLS

Red symbols indicate internal characteristics.
 Green symbols indicate external characteristics.

GRADING SCALES

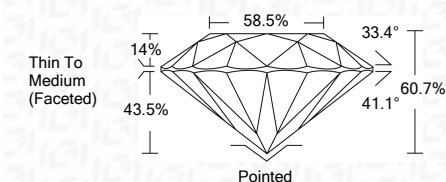
COLOR GRADING SCALE	CL	NC	FT	VL	LT	
	COLORLESS D-F	NEAR COLORLESS G-J	FAINT K-M	VERY LIGHT N-R	LIGHT S-Z	
CLARITY (10x) GRADING SCALE	FL	IF	VVS	VS	SI	I
	FLAWLESS INTERNALLY FLAWLESS	VERY VERY SLIGHTLY INCLUDED	VERY SLIGHTLY INCLUDED	SLIGHTLY INCLUDED	INCLUDED	



LASERSCRIBESM

Sample Image Used

May 23, 2022
 IGI Report Number **LG529281165**
 Description **LABORATORY GROWN
DIAMOND**
 Shape and Cutting Style **ROUND BRILLIANT**
 Measurements **7.07 - 7.11 X 4.30 MM**
GRADING RESULTS
 Carat Weight **1.31 CARAT**
 Color Grade **G**
 Clarity Grade **VS 1**
 Cut Grade **IDEAL**



ADDITIONAL GRADING INFORMATION

Polish **EXCELLENT**
 Symmetry **EXCELLENT**
 Fluorescence **NONE**

Inscription(s) **LABGROWN IGI LG529281165**

Comments: This Laboratory Grown Diamond was created by Chemical Vapor Deposition (CVD) growth process and may include post-growth treatment.
 Type IIa



IGI



May 23, 2022	IGI Report No. LG529281165	1.31 CARAT	G	Pointed	EXCELLENT	EXCELLENT	LABGROWN IGI LG529281165	Comments: This Laboratory Grown Diamond was created by Chemical Vapor Deposition (CVD) growth process and may include post-growth treatment. Type IIa
ROUND BRILLIANT	7.07 - 7.11 X 4.30 MM	VS 1	IDEAL	60.7%	58.5%	Thin To Medium (Faceted)	None	
Color Grade	Clarity Grade	Cut Grade	Depth	Table	Girdle	Culet	Polish	
							Symmetry	
							Inscriptions(s)	