



ELECTRONIC COPY

LABORATORY GROWN DIAMOND REPORT

LG553250793

Report verification at igi.org

**LABORATORY GROWN
DIAMOND REPORT**

LABORATORY GROWN DIAMOND REPORT

LABORATORY GROWN DIAMOND REPORT

November 19, 2022
 IGI Report Number **LG553250793**
 Description **LABORATORY GROWN
DIAMOND**
 Shape and Cutting Style **ROUND BRILLIANT**
 Measurements **8.49 - 8.51 X 5.16 MM**

GRADING RESULTS

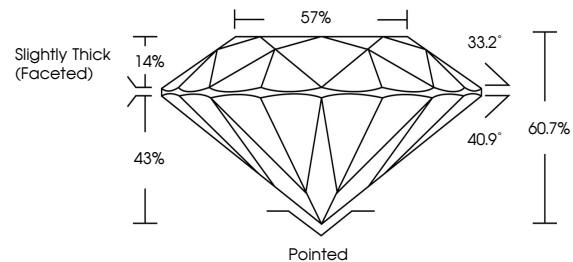
Carat Weight **2.28 CARATS**
 Color Grade **I**
 Clarity Grade **VVS 2**
 Cut Grade **IDEAL**

ADDITIONAL GRADING INFORMATION

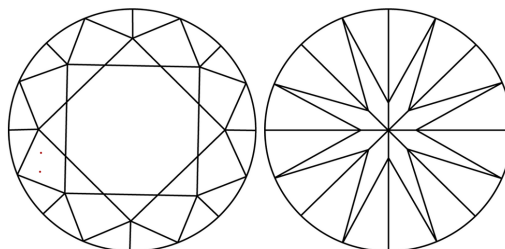
Polish **EXCELLENT**
 Symmetry **EXCELLENT**
 Fluorescence **VERY SLIGHT**
 Inscription(s) **GROWN IN THE USA
Pat.6,858,078 (US) LG553250793**

Comments: As Grown - No indication of post-growth treatment.
 This Laboratory Grown Diamond was created by Chemical Vapor Deposition (CVD) process.

PROPORTIONS



CLARITY CHARACTERISTICS



KEY TO SYMBOLS

Red symbols indicate internal characteristics.
 Green symbols indicate external characteristics.

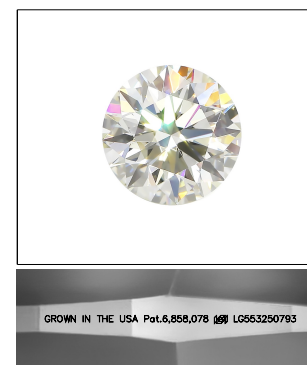
GRADING SCALES

CLARITY

IF	VVS ¹⁻²	VS ¹⁻²	SI ¹⁻²	I ¹⁻³
Internally Flawless	Very Very Slightly Included	Very Slightly Included	Slightly Included	Included

COLOR

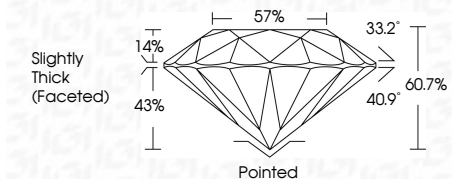
D	E	F	G	H	I	J	Faint	Very Light	Light
---	---	---	---	---	---	---	-------	------------	-------



LASERSCRIBESM

Sample Image Used

November 19, 2022
 IGI Report Number **LG553250793**
 Description **LABORATORY GROWN
DIAMOND**
 Shape and Cutting Style **ROUND BRILLIANT**
 Measurements **8.49 - 8.51 X 5.16 MM**
GRADING RESULTS
 Carat Weight **2.28 CARATS**
 Color Grade **I**
 Clarity Grade **VVS 2**
 Cut Grade **IDEAL**



ADDITIONAL GRADING INFORMATION

Polish **EXCELLENT**
 Symmetry **EXCELLENT**
 Fluorescence **VERY SLIGHT**
 Inscription(s) **GROWN IN THE USA
Pat.6,858,078 (US)
LG553250793**

Comments: As Grown - No indication of post-growth treatment.
 This Laboratory Grown Diamond was created by Chemical Vapor Deposition (CVD) process.



IGI



November 19, 2022
 IGI Report No LG553250793
ROUND BRILLIANT
8.49 - 8.51 X 5.16 MM
 Carat Weight **2.28 CARATS**
 Color Grade **I**
 Clarity Grade **VVS 2**
 Cut Grade **IDEAL**
 Depth **60.7%**
 Table **57%**
 Girdle **Slightly Thick (Faceted)**
 Culet **Pointed**
 Polish **EXCELLENT**
 Symmetry **EXCELLENT**
 Fluorescence **VERY SLIGHT**
 Inscription(s) **GROWN IN THE USA
Pat.6,858,078 (US)
LG553250793**
 Comments: **As Grown - No indication of post-growth treatment.**
This Laboratory Grown Diamond was created by Chemical Vapor Deposition (CVD) process.