



ELECTRONIC COPY

750557186
Report verification at igi.org



February 18, 2026

IGI Report Number **750557186**

Description **NATURAL DIAMOND**

Shape and Cutting Style **ROUND BRILLIANT**

Measurements **6.73 - 6.80 X 4.14 MM**

GRADING RESULTS

Carat Weight **1.14 CARAT**

Color Grade **J**

Clarity Grade **SI 1**

Cut Grade **EXCELLENT**

February 18, 2026

IGI Report Number **750557186**

Description **NATURAL DIAMOND**

Shape and Cutting Style **ROUND BRILLIANT**

Measurements **6.73 - 6.80 X 4.14 MM**

GRADING RESULTS

Carat Weight **1.14 CARAT**

Color Grade **J**

Clarity Grade **SI 1**

Cut Grade **EXCELLENT**

ADDITIONAL GRADING INFORMATION

Polish **EXCELLENT**

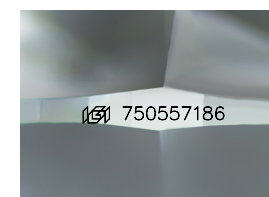
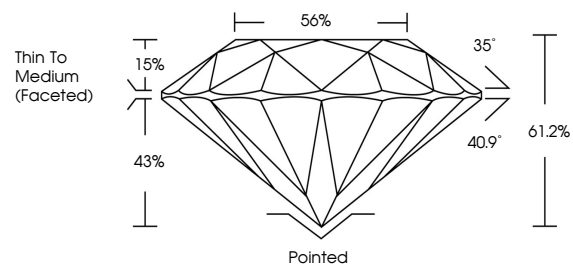
Symmetry **VERY GOOD**

Fluorescence **NONE**

Inscription(s) **750557186**

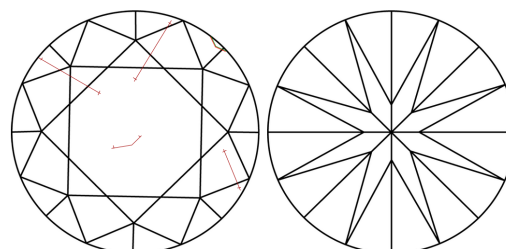
Comments: Surface grain lines present.

PROPORTIONS



Sample Image Used

CLARITY CHARACTERISTICS



KEY TO SYMBOLS

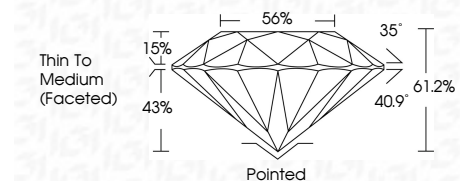
Red symbols indicate internal characteristics.
Green symbols indicate external characteristics.

COLOR

D - F	G - J	K - M	N - R	S - Z	FANCY
Colorless	Near Colorless	Slightly Tinted	Very Light Color	Light Color	

CLARITY

FL	IF	VVS ¹⁻²	VS ¹⁻²	SI ¹⁻²	I ¹⁻³
Flawless	Internally Flawless	Very Very Slightly Included	Very Slightly Included	Slightly Included	Included



ADDITIONAL GRADING INFORMATION

Polish **EXCELLENT**

Symmetry **VERY GOOD**

Fluorescence **NONE**

Inscription(s) **750557186**

Comments: Surface grain lines present.



IGI

February 18, 2026	1.14 CARAT	J	EXCELLENT	61.2%	56%	Pointed	EXCELLENT	VERY GOOD	NONE	750557186
IGI Report No 750557186	6.73 - 6.80 X 4.14 MM	ROUND BRILLIANT	SI 1	Thin To Medium (Faceted)	Polish	Symmetry	Fluorescence	Inscription(s)	Comments:	Surface grain lines present.