



**INTERNATIONAL
GEMOLOGICAL
INSTITUTE**

ELECTRONIC COPY

LABORATORY GROWN DIAMOND REPORT

LG451091240

**IGI LABORATORY GROWN
DIAMOND ID REPORT**

12/08/2020

IGI Report Number **LG451091240**

**CUT CORNERED RECTANGULAR
MODIFIED BRILLIANT**

6.74 x 4.98 x 3.17 MM

Carat Weight 0.93 CARAT
Color Grade G
Clarity Grade SI 2
Polish VERY GOOD
Symmetry VERY GOOD
Fluorescence NONE
Inscription(s) LABGROWN IGI
LG451091240

Comments: This Laboratory grown diamond was created by chemical vapor deposition process (CVD).
Type IIa

IGI GEMOLOGICAL REPORT

IGI LABORATORY GROWN DIAMOND IDENTIFICATION REPORT

12/08/2020
IGI Report Number LG451091240
Shape and Cutting Style CUT CORNERED RECTANGULAR
MODIFIED BRILLIANT
Measurements 6.74 x 4.98 x 3.17 MM

GRADING RESULTS

Carat Weight 0.93 CARAT
Color Grade G
Clarity Grade SI 2

ADDITIONAL GRADING INFORMATION

Polish VERY GOOD
Symmetry VERY GOOD
Fluorescence NONE
Inscription(s) LABGROWN IGI LG451091240

Comments: This Laboratory grown diamond was created by chemical vapor deposition process (CVD).
Type IIa



This Laboratory Grown Diamond (LGD) described in this Report has been analyzed, graded and Laserscribed® by International Gemological Institute (IGI). A LGD has essentially the chemical, physical and optical properties as a mined diamond, with the exception of being man-made (a manufactured product). LGD's are typically produced by CVD (chemical vapor deposition) or by HPHT (high pressure high temperature) growth processes and may include post growth modifications to change the color. IGI utilizes the most advanced techniques and equipment currently available including, binocular microscopes, diamond color masters, non-contact-optical measuring device, a wide range analytical techniques including FTIR, UV-VIS-NIR, raman spectroscopy, and fluorescence analysis at various excitation wavelengths. This Report includes advanced security features. This Report is neither a guarantee, valuation nor appraisal and by making the report IGI does not agree to purchase or replace the article.
INTERNATIONAL GEMOLOGICAL INSTITUTE, INC

ADDITIONAL INFORMATION

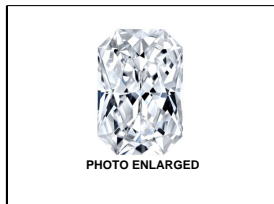
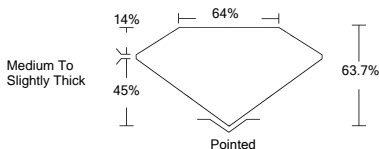


PHOTO ENLARGED



LABGROWN IGI LG451091240

LASERSCRIBESM



**IGI LABORATORY GROWN
DIAMOND ID REPORT**

12/08/2020

IGI Report Number **LG451091240**

**CUT CORNERED RECTANGULAR
MODIFIED BRILLIANT**

6.74 x 4.98 x 3.17 MM

Carat Weight 0.93 CARAT
Color Grade G
Clarity Grade SI 2
Polish VERY GOOD
Symmetry VERY GOOD
Fluorescence NONE
Inscription(s) LABGROWN IGI
LG451091240

Comments: This Laboratory grown diamond was created by chemical vapor deposition process (CVD).
Type IIa

For Terms & Conditions, please visit www.igi.org

THE DOCUMENT WAS PRODUCED WITH THE FOLLOWING SECURITY MEASURES: SPECIAL DOCUMENT PAPER, INK SCREENS, WATERMARK BACKGROUND DESIGNS HOLOGRAM AND OTHER SECURITY FEATURES NOT LISTED AND DO EXCEED DOCUMENT SECURITY INDUSTRY GUIDELINES