



**ELECTRONIC COPY**

**LABORATORY GROWN DIAMOND REPORT**

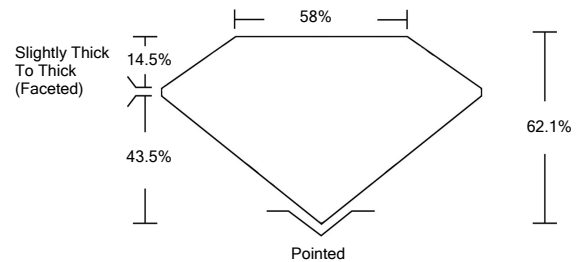
July 13, 2022	
IGI Report Number	<b>LG478130138</b>
Description	<b>LABORATORY GROWN DIAMOND</b>
Shape and Cutting Style	<b>PEAR BRILLIANT</b>
Measurements	<b>8.11 X 5.06 X 3.14 MM</b>
<b>GRADING RESULTS</b>	
Carat Weight	<b>0.76 CARAT</b>
Color Grade	<b>H</b>
Clarity Grade	<b>SI 1</b>
<b>ADDITIONAL GRADING INFORMATION</b>	
Polish	<b>EXCELLENT</b>
Symmetry	<b>VERY GOOD</b>
Fluorescence	<b>NONE</b>
Inscription(s)	<b>GROWN IN THE USA Pat.6,858,078 IGI LG478130138</b>

Comments:  
As Grown - No indication of post-growth treatment.  
This Laboratory Grown Diamond was created by Chemical Vapor Deposition (CVD) process.

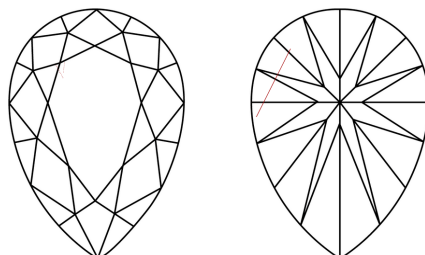


**LABORATORY GROWN DIAMOND REPORT**  
**LG478130138**  
Report verification at [igi.org](http://igi.org)

**PROPORTIONS**



**CLARITY CHARACTERISTICS**



**KEY TO SYMBOLS**

Red symbols indicate internal characteristics.  
Green symbols indicate external characteristics.

**LABORATORY GROWN  
DIAMOND REPORT**

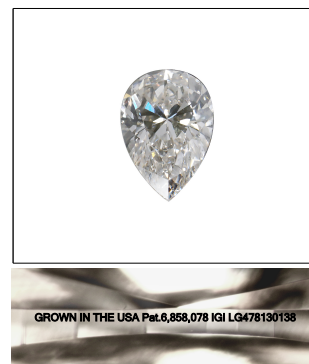
**GRADING SCALES**

**CLARITY**

IF	VVS <sup>1-2</sup>	VS <sup>1-2</sup>	SI <sup>1-2</sup>	I <sup>1-3</sup>
Internally Flawless	Very Very Slightly Included	Very Slightly Included	Slightly Included	Included

**COLOR**

D	E	F	G	H	I	J	Faint	Very Light	Light
---	---	---	---	---	---	---	-------	------------	-------



**LASERSCRIBE<sup>SM</sup>**

Sample Image Used

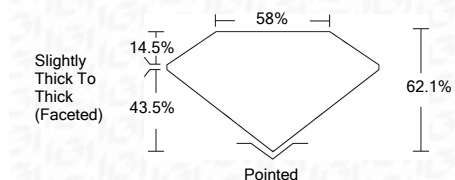


© IGI 2020, International Gemological Institute

FD - 10 20

**LABORATORY GROWN DIAMOND REPORT**

July 13, 2022	
IGI Report Number	<b>LG478130138</b>
Description	<b>LABORATORY GROWN DIAMOND</b>
Shape and Cutting Style	<b>PEAR BRILLIANT</b>
Measurements	<b>8.11 X 5.06 X 3.14 MM</b>
<b>GRADING RESULTS</b>	
Carat Weight	<b>0.76 CARAT</b>
Color Grade	<b>H</b>
Clarity Grade	<b>SI 1</b>



**ADDITIONAL GRADING INFORMATION**

Polish	<b>EXCELLENT</b>
Symmetry	<b>VERY GOOD</b>
Fluorescence	<b>NONE</b>
Inscription(s)	<b>GROWN IN THE USA Pat.6,858,078 IGI LG478130138</b>

Comments:  
As Grown - No indication of post-growth treatment.  
This Laboratory Grown Diamond was created by Chemical Vapor Deposition (CVD) process.



**IGI**

July 13, 2022	
IGI Report No. LG478130138	
<b>PEAR BRILLIANT</b>	
8.11 X 5.06 X 3.14 MM	
Carat Weight	<b>0.76 CARAT</b>
Color Grade	<b>H</b>
Clarity Grade	<b>SI 1</b>
Depth	<b>62.1%</b>
Table	<b>58%</b>
Grade	<b>Slightly Thick To Thick (Faceted)</b>
Culet	<b>Pointed</b>
Polish	<b>EXCELLENT</b>
Symmetry	<b>VERY GOOD</b>
Fluorescence	<b>NONE</b>
Inscription(s)	<b>GROWN IN THE USA Pat.6,858,078 IGI Pat.6,858,078</b>
Comments:	<b>As Grown - No indication of post-growth treatment. This Laboratory Grown Diamond was created by Chemical Vapor Deposition (CVD) process.</b>