

LABORATORY GROWN
DIAMOND REPORT

LABORATORY GROWN DIAMOND REPORT

LG487114965

LABORATORY GROWN DIAMOND REPORT

September 16, 2021

IGI Report Number **LG487114965**

Description	LABORATORY GROWN DIAMOND
Shape and Cutting Style	ROUND BRILLIANT
Measurements	7.16 - 7.22 X 4.65 MM

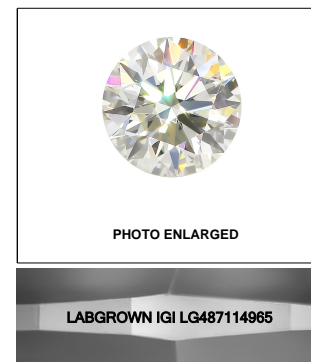
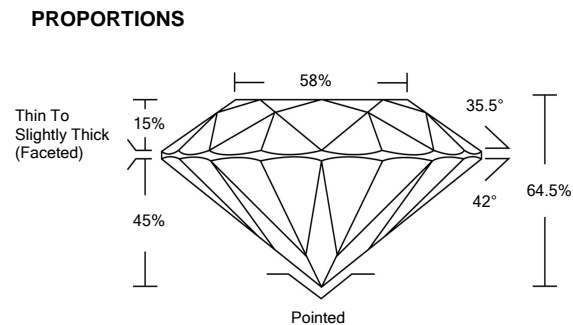
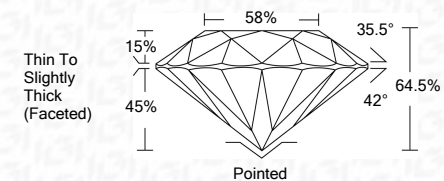
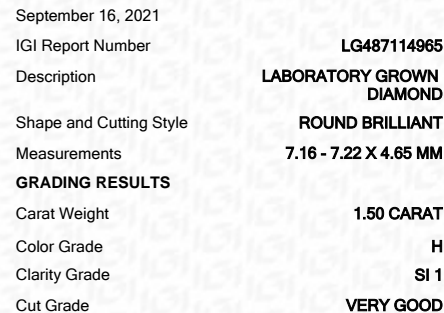
GRADING RESULTS

Carat Weight	1.50 CARAT
Color Grade	H
Clarity Grade	SI 1
Cut Grade	VERY GOOD

ADDITIONAL GRADING INFORMATION

Polish	EXCELLENT
Symmetry	EXCELLENT
Fluorescence	NONE
Inscription(s)	LABGROWN IGI LG487114965

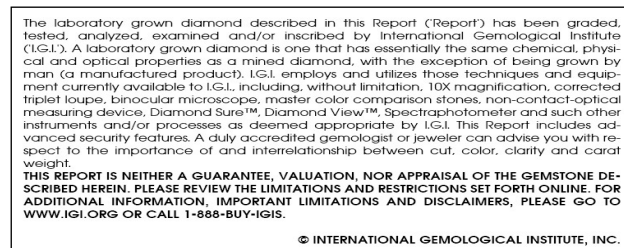
Comments: This Laboratory Grown Diamond was created by Chemical Vapor Deposition (CVD) growth process and may include post-growth treatment.
Type IIa

LASERSCRIBESM

ADDITIONAL GRADING INFORMATION

Polish	EXCELLENT
Symmetry	EXCELLENT
Fluorescence	NONE
Inscription(s)	LABGROWN IGI LG487114965

Comments: This Laboratory Grown Diamond was created by Chemical Vapor Deposition (CVD) growth process and may include post-growth treatment.
Type IIa



www.igi.org



© IGI 2020, International Gemological Institute

FD - 10 20



IG

September 16, 2021	IGI Report No. LG487114985
ROUND BRILLIANT	
1.50 CARAT	H
1.16 - 1.22 x 4.65 MM	
Color Weight	
Clarity Grade	S11
Cut Grade	VERY GOOD
Depth	64.5%
Table	58%
Girdle	Thin To Slightly Thick (Faceted)
Culet	Pointed
Polish	EXCELLENT
Symmetry	EXCELLENT
Fluorescence	NONE
Inscriptions	LAGROWN IGI LG487114985
Comments:	This Laboratory Grown Diamond was created by Chemical Vapor Deposition (CVD) growth treatment. It may include post-growth treatment.
Type Ila	