



**ELECTRONIC COPY**

# LABORATORY GROWN DIAMOND REPORT

LABORATORY GROWN DIAMOND REPORT

## LABORATORY GROWN DIAMOND REPORT

September 3, 2021	
IGI Report Number	LG490199771
Description	LABORATORY GROWN DIAMOND
Shape and Cutting Style	ROUND BRILLIANT
Measurements	6.47 - 6.52 X 3.95 MM

## GRADING RESULTS

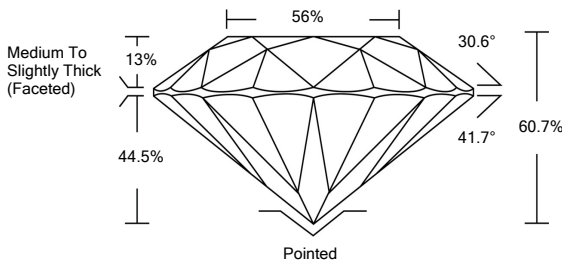
Carat Weight	1.00 CARAT
Color Grade	D
Clarity Grade	SI 1
Cut Grade	VERY GOOD

### ADDITIONAL GRADING INFORMATION

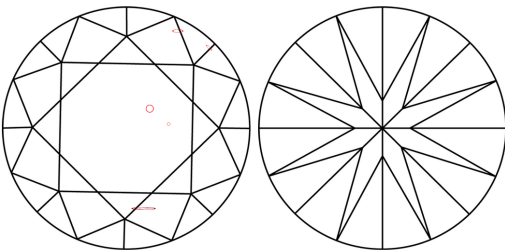
Polish	EXCELLENT
Symmetry	EXCELLENT
Fluorescence	NONE
Inscription(s)	LABGROWN IGI LG490199771

Comments: As Grown - No indication of post-growth treatment.  
This Laboratory Grown Diamond was created by High Pressure High Temperature (HPHT) growth process.  
Type II

## PROPORTIONS



## CLARITY CHARACTERISTICS



## KEY TO SYMBOLS

Red symbols indicate internal characteristics.  
Green symbols indicate external characteristics.

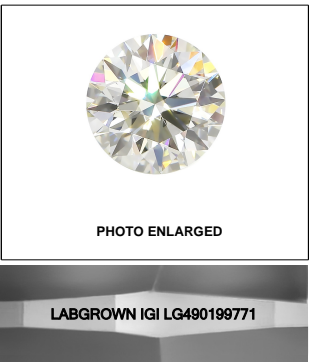
## GRADING SCALES

COLOR GRADING SCALE	CL		NC		FT		VLT		LT	
	COLORLESS D-F		NEAR COLORLESS G-J		FAINT K-M		VERY LIGHT N-R		LIGHT S-Z	
CLARITY (10x) GRADING SCALE	FL	IF	VVS		VS		SI		I	
	FLAWLESS INTERNALLY FLAWLESS		VERY VERY SLIGHTLY INCLUDED		VERY SLIGHTLY INCLUDED		SLIGHTLY INCLUDED		INCLUDED	

The laboratory grown diamond described in this Report (Report) has been graded, tested, analyzed, examined and/or inscribed by International Gemological Institute (IGI). A laboratory grown diamond is one that has essentially the same chemical, physical and optical properties as a natural diamond. IGI is a leading diamond grading and testing laboratory (a manufactured product). IGI employs and utilizes those techniques and equipment currently available to IGI, including, without limitation, 10X magnification, corrected triplet loupe, binocular microscope, master color comparison stones, non-contact-optical spectrophotometer, diamond grading software, and other diamond grading instruments and/or processes as deemed appropriate by IGI. This Report includes advanced security features. A duly accredited gemologist or jeweler can advise you with respect to the importance of and interrelationship between cut, color, clarity and carat weight.

**THIS REPORT IS NEITHER A GUARANTEE, VALUATION, NOR APPRAISAL OF THE GEMSTONE DESCRIBED HEREIN. PLEASE REVIEW THE LIMITATIONS AND RESTRICTIONS SET FORTH ONLINE. FOR MORE INFORMATION, VISIT [WWW.IGI.ORG](http://WWW.IGI.ORG) OR CALL 1-888-BUY-IGI.**

© INTERNATIONAL GEMOLOGICAL INSTITUTE, INC.

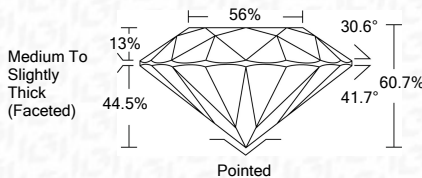
**LASERSCRIBE<sup>SM</sup>**

© IGI 2020, International Gemological Institute

FD - 10 20

**www.igi.org**

September 3, 2021	
IGI Report Number	LG490199771
Description	LABORATORY GROWN DIAMOND
Shape and Cutting Style	ROUND BRILLIANT
Measurements	6.47 - 6.52 X 3.95 MM
GRADING RESULTS	
Carat Weight	1.00 CARAT
Color Grade	D
Clarity Grade	SI 1
Cut Grade	VERY GOOD



### ADDITIONAL GRADING INFORMATION

Polish	EXCELLENT
Symmetry	EXCELLENT
Fluorescence	NONE
Inscription(s)	LABGROWN IGI LG490199771

Comments: As Grown - No indication of post-growth treatment.  
This Laboratory Grown Diamond was created by High Pressure High Temperature (HPHT) growth process.  
Type II



IGI

September 3, 2021	IGI Report No. LC490188771
ROUND BRILLIANT	
4.7 - 6.52 X 3.95 mm	
Carat Weight	1.00 CARAT
Color Grade	D
Clarity Grade	SI1
Cut Grade	VERY GOOD
Depth	60.7%
Table	95%
	Medium to Slightly Thick (Faceted)
Culet	Polished
Polish	EXCELLENT
Symmetry	EXCELLENT
Fluorescence	NONE
(inscriptions)	LABGROWN IGI LC490188771
Comments:	As Grown - No Indication of post-growth treatment. This Laboratory Grown Diamond was created by High Pressure High Temperature (HPHT) growth process. Type II