



ELECTRONIC COPY

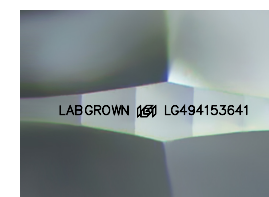
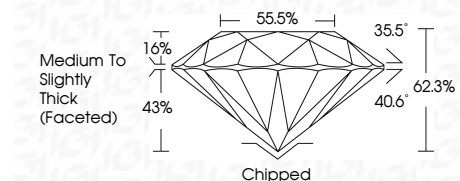
LG494153641
Report verification at igi.org



March 10, 2026
IGI Report Number **LG494153641**
Description **LABORATORY GROWN DIAMOND**
Shape and Cutting Style **ROUND BRILLIANT**
Measurements **6.52 - 6.57 X 4.08 MM**

GRADING RESULTS

Carat Weight **1.07 CARAT**
Color Grade **F**
Clarity Grade **VVS 2**
Cut Grade **IDEAL**



Sample Image Used

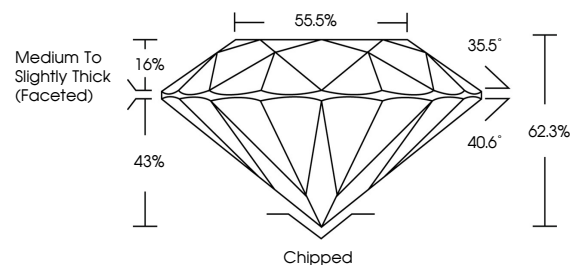
ADDITIONAL GRADING INFORMATION

Polish **EXCELLENT**
Symmetry **EXCELLENT**
Fluorescence **NONE**
Inscription(s) **LABGROWN IGI LG494153641**
Comments: HEARTS & ARROWS
As Grown - No indication of post-growth treatment. This Laboratory Grown Diamond was created by High Pressure High Temperature (HPHT) growth process.

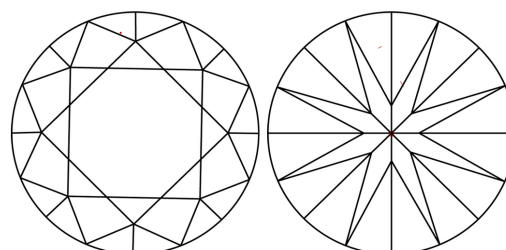


March 10, 2026
IGI Report No. **LG494153641**
ROUND BRILLIANT
6.52 - 6.57 X 4.08 MM
Carat Weight **1.07 CARAT**
Color Grade **F**
Clarity Grade **VVS 2**
Cut Grade **IDEAL**
Depth **62.3%**
Table **16.6%**
Girdle **Medium To Slightly Thick (Faceted)**
Culet **Chipped**
Polish **EXCELLENT**
Symmetry **EXCELLENT**
Fluorescence **NONE**
Inscriptions(s) **LABGROWN IGI LG494153641**
Comments: HEARTS & ARROWS
As Grown - No indication of post-growth treatment. This Laboratory Grown Diamond was created by High Pressure High Temperature (HPHT) growth process.

PROPORTIONS



CLARITY CHARACTERISTICS



KEY TO SYMBOLS

Red symbols indicate internal characteristics.
Green symbols indicate external characteristics.



COLOR

D E F G H I J Faint Very Light Light

CLARITY

FL	IF	VVS ¹⁻²	VS ¹⁻²	SI ¹⁻²	I ¹⁻³
Flawless	Internally Flawless	Very Very Slightly Included	Very Slightly Included	Slightly Included	Included

