



ELECTRONIC COPY

LABORATORY GROWN DIAMOND REPORT

LABORATORY GROWN DIAMOND REPORT

LG494161012

PROPORTIONS

Thin To Medium Faceted)

The diagram illustrates the proportions of a diamond, showing the following measurements:

- Top width: 60%
- Top height: 13%
- Bottom height: 44%
- Right side height: 32.7°
- Right side angle: 41.5°
- Right side width: 60.8%
- Pointed bottom

GRADING SCALES

COLOR GRADING SCALE	CL	NC	FT	VLT	LT
	COLORLESS D-F	NEAR COLORLESS G-J	FAINT K-M	VERY LIGHT N-R	LIGHT S-Z
CLARITY (10x) GRADING SCALE	FL	VVS	VS	SI	I
	FLAWLESS INTERNALLY FLAWLESS	VERY VERY SLIGHTLY INCLUDED	VERY SLIGHTLY INCLUDED	SLIGHTLY INCLUDED	INCLUDED

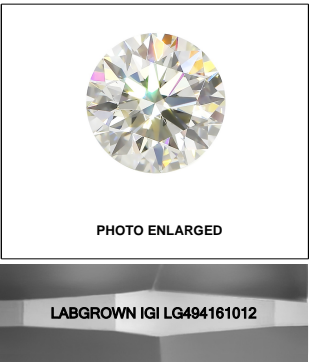
The laboratory grown diamond described in this Report ("Report") has been graded, tested, analyzed, examined and/or inscribed by International Gemological Institute (I.G.I.). A laboratory grown diamond is one that has essentially the same chemical, physical and optical properties as a natural diamond except it was created by a synthetic process (a manufactured product). I.G.I. employs and utilizes those techniques and equipment currently available to I.G.I., including, without limitation, 10X magnification, corrected incident light, binocular microscope, master color comparison stones, non-contact infrared spectrometry, ultraviolet fluorescence examination, etc. The Report includes photographs and/or processes as deemed appropriate by I.G.I. This Report includes advanced security features. A duly accredited gemologist or jeweler can advise you with regard to the importance of and interrelationship between cut, color, clarity and carat weight.

THIS REPORT IS NEITHER A GUARANTEE, VALUATION, NOR APPRAISAL OF THE GEMSTONE DESCRIBED HEREIN. PLEASE REVIEW THE LIMITATIONS AND RESTRICTIONS SET FORTH ONLINE. FOR MORE INFORMATION REGARDING OUR POLICIES, CONDITIONS, TERMS AND DISCLAIMERS, PLEASE GO TO WWW.IGI.ORG OR CALL 1-888-BUY-IGI.

© INTERNATIONAL GEMOLOGICAL INSTITUTE, INC.

KEY TO SYMBOLS

Red symbols indicate internal characteristics.
Green symbols indicate external characteristics.

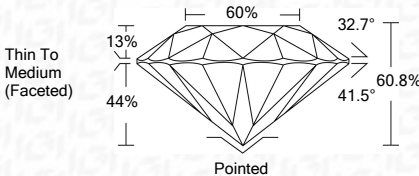
**LASERSCRIBESM**

© IGI 2020, International Gemological Institute

FD - 10 20

Comments: This Laboratory Grown Diamond was created by Chemical Vapor Deposition (CVD) growth process and may include post-growth treatment.
Type IIa

September 15, 2021	
IGI Report Number	LG494161012
Description	LABORATORY GROWN DIAMOND
Shape and Cutting Style	ROUND BRILLIANT
Measurements	7.39 - 7.45 X 4.50 MM
GRADING RESULTS	
Carat Weight	1.50 CARAT
Color Grade	J
Clarity Grade	VVS 2
Cut Grade	EXCELLENT



ADDITIONAL GRADING INFORMATION

Polish	EXCELLENT
Symmetry	EXCELLENT
Fluorescence	NONE
Inscription(s)	LABGROWN IGI LG494161012

Comments: This Laboratory Grown Diamond was created by Chemical Vapor Deposition (CVD) growth process and may include post-growth treatment.
Type IIa



IGI

IGI Report No. LG494181012	ROUND BRILLIANT	1.50 CARAT	J	VS2	EXCELLENT	60.6%	80%	Thin To Medium (Faceted)	Pointed	EXCELLENT	EXCELLENT	NONE	LAGBROWN IGI LG494181012	Comments: This Laboratory Grown Diamond was created by Chemical Vapor Deposition (CVD) growth process and may include natural inclusions and may require treatment.
September 15, 2021		7.32 - 7.45 X 5.50 MM	Color Grade	Clarity Grade	Cut Grade	Depth	Table	Girdle	Culet	Symmetry	Inscriptions(s)			Type II