



ELECTRONIC COPY

LABORATORY GROWN
DIAMOND REPORT

LABORATORY GROWN DIAMOND REPORT

September 17, 2021	
IGI Report Number	LG494175167
Description	LABORATORY GROWN DIAMOND
Shape and Cutting Style	ROUND BRILLIANT
Measurements	8.74 - 8.79 X 5.30 MM

GRADING RESULTS

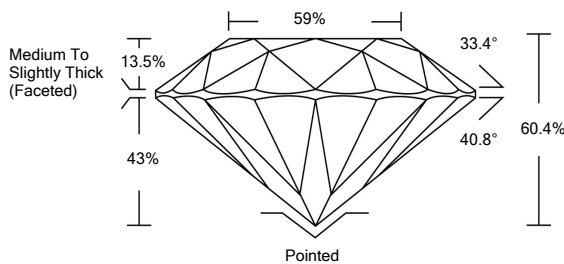
Carat Weight	2.51 CARATS
Color Grade	F
Clarity Grade	VS 2
Cut Grade	IDEAL

ADDITIONAL GRADING INFORMATION

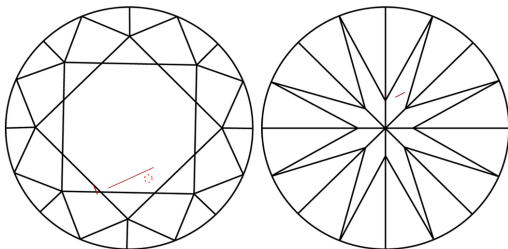
Polish	EXCELLENT
Symmetry	EXCELLENT
Fluorescence	NONE
Inscription(s)	LABGROWN IGI LG494175167

Comments: This Laboratory Grown Diamond was created by Chemical Vapor Deposition (CVD) growth process and may include post-growth treatment.
Type IIa

PROPORTIONS



CLARITY CHARACTERISTICS



KEY TO SYMBOLS

Red symbols indicate internal characteristics.
Green symbols indicate external characteristics.

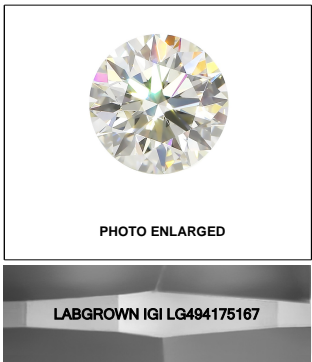
GRADING SCALES

COLOR GRADING SCALE	CL		NC	FT	VLT	LT
	COLORLESS D-F		NEAR COLORLESS G-J	FAINT K-M	VERY LIGHT N-R	LIGHT S-Z
CLARITY (10x) GRADING SCALE	FL	IF	VVS	VS	SI	I
	FLAWLESS INTERNALLY FLAWLESS		VERY VERY SLIGHTLY INCLUDED	VERY SLIGHTLY INCLUDED	SLIGHTLY INCLUDED	INCLUDED

The laboratory grown diamond described in this Report (Report) has been graded, tested, analyzed, examined and/or inscribed by International Gemological Institute (I.G.I.). A laboratory grown diamond is one that has essentially the same chemical, physical and optical properties as a natural diamond. I.G.I. is a company that manufactures diamonds (manufactured product). I.G.I. employs and utilizes those techniques and equipment currently available to I.G.I., including, without limitation, 10x magnification, corrected triplet loupe, binocular microscope, master color comparison stones, non-contact optical spectrometer, and/or other instruments and/or processes as deemed appropriate by I.G.I. This Report includes advanced security features. A duly accredited gemologist or jeweler can advise you with respect to the importance of and interrelationship between app. color, clarity and carat weight.

THIS REPORT IS NEITHER A GUARANTEE, VALUATION, NOR APPRAISAL OF THE GEMSTONE DESCRIBED HEREIN. PLEASE REVIEW THE LIMITATIONS AND RESTRICTIONS SET FORTH ONLINE FOR THIS REPORT. FOR A COMPLETE LIST OF LIMITATIONS AND DISCLAIMERS, PLEASE GO TO WWW.IGI.ORG OR CALL 1-888-BUY-IGI.

© INTERNATIONAL GEMOLOGICAL INSTITUTE, INC.

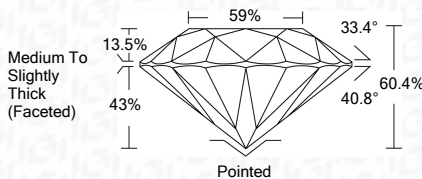
**LASERSCRIBESM**

© IGI 2020, International Gemological Institute

FD - 10 20

THIS DOCUMENT WAS PRODUCED WITH THE FOLLOWING SECURITY MEASURES: SPECIAL DOCUMENT PAPER, INK SCREENS, WATERMARK, BACKGROUND DESIGNS, HOLOGRAM AND OTHER SECURITY FEATURES NOT LISTED AND DO EXCEED DOCUMENT SECURITY INDUSTRY GUIDELINES.

September 17, 2021	
IGI Report Number	LG494175167MM
Description	LABORATORY GROWN DIAMOND
Shape and Cutting Style	ROUND BRILLIANT
Measurements	8.74 - 8.79 X 5.30 MM
GRADING RESULTS	
Carat Weight	2.51 CARAT(S)
Color Grade	F
Clarity Grade	VS 2
Cut Grade	IDEAL



ADDITIONAL GRADING INFORMATION

Polish	EXCELLENT
Symmetry	EXCELLENT
Fluorescence	NONE
Inscription(s)	LABGROWN IGI LG494175167

Comments: This Laboratory Grown Diamond was created by Chemical Vapor Deposition (CVD) growth process and may include post-growth treatment.
Type IIa



IGI

September 17, 2021	IGI Report No. LG48175167	2.51 CARATS	F	VS2	IDEAL	60.4%	59%	Medium to Slightly Thick (Facets)	Pointed	EXCELLENT	NONE	LAGBROWN LG1 LG48175167
ROUND BRILLIANT	6.87 x 4.79 x 5.30 MM	Color Grade	Clarity Grade	Cut Grade	Depth	Table	Girdle	Symmetry	Fluorescence	Inscriptions (if any)	Comments: This Laboratory Grown Diamond was created by Chemical Vapor Deposition (CVD) growth process and may include natural inclusions and/or natural treatment. Type IIa.	