



September 18, 2021	
IGI Report Number	LG494175526
Description	LABORATORY GROWN DIAMOND
Shape and Cutting Style	ROUND BRILLIANT
Measurements	6.42 - 6.44 X 3.97 MM

Carat Weight	1.02 CARAT
Color Grade	I
Clarity Grade	VVS 2
Cut Grade	IDEAL

Polish	EXCELLENT
Symmetry	EXCELLENT
Fluorescence	NONE
Inscription(s)	LABGROWN IGI LG494175526

Comments: This Laboratory Grown Diamond was created by Chemical Vapor Deposition (CVD) growth process and may include post-growth treatment.  
Type IIa

LG494175526

Medium To Slightly Thick (Faceted)

59.5%

35.8°

40.8°

61.8%

43%

14.5%

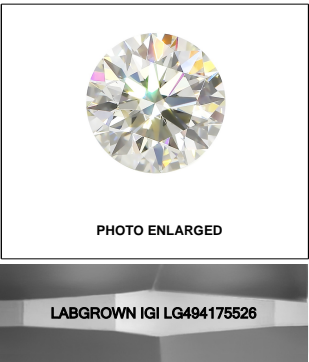
Pointed

Red symbols indicate internal characteristics.  
Green symbols indicate external characteristics.

COLOR GRADING SCALE	CL		NC		FT		VLT		LT	
	COLORLESS D-F		NEAR COLORLESS G-J		FAINT K-M		VERY LIGHT N-R		LIGHT S-Z	
CLARITY (10x) GRADING SCALE	FL	IF	VVS		VS		SI		I	
	FLAWLESS INTERNALLY FLAWLESS		VERY VERY SLIGHTLY INCLUDED		VERY SLIGHTLY INCLUDED		SLIGHTLY INCLUDED		INCLUDED	

The laboratory grown diamond described in this Report (Report) has been graded, tested, analyzed, examined and/or inscribed by International Gemological Institute (I.G.I.). A laboratory grown diamond is one that has essentially the same chemical, physical and optical properties as a natural diamond but is synthetically created (grown) (man-made) (a manufactured product). I.G.I. employs and utilizes those techniques and equipment currently available to I.G.I., including, without limitation, 10X magnification, corrected and uncorrected fluorescence, ultraviolet light, ultraviolet fluorescence, color measuring device, Diamond Sure™, Diamond View™, Spectrophotometer and such other instruments and/or processes as deemed appropriate by I.G.I. This Report includes advanced security features. A duly accredited gemologist or jeweler can advise you with reference to the importance and interrelationship between color, clarity and carat weight.

**THIS REPORT IS NEITHER A GUARANTEE, VALUATION, NOR APPRAISAL OF THE GEMSTONE DESCRIBED HEREIN. PLEASE REVIEW THE LIMITATIONS AND RESTRICTIONS SET FORTH ONLINE. FOR MORE INFORMATION, VISIT [WWW.IGI.ORG](http://WWW.IGI.ORG) OR CALL 1-888-BUY-IGI.**

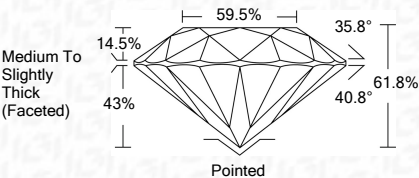
**LASERSCRIBE<sup>SM</sup>**

© IGI 2020, International Gemological Institute

FD - 10 20

THIS DOCUMENT WAS PRODUCED WITH THE FOLLOWING SECURITY MEASURES: SPECIAL DOCUMENT PAPER, INK SCREENS, WATERMARK, BACKGROUND DESIGNS, HOLOGRAM AND OTHER SECURITY FEATURES NOT LISTED AND DO EXCEED DOCUMENT SECURITY INDUSTRY GUIDELINES

September 18, 2021	
IGI Report Number	LG494175526
Description	LABORATORY GROWN DIAMOND
Shape and Cutting Style	ROUND BRILLIANT
Measurements	6.42 - 6.44 X 3.97 MM
GRADING RESULTS	
Carat Weight	1.02 CARAT
Color Grade	
Clarity Grade	VVS 2
Cut Grade	IDEAL



Polish	EXCELLENT
Symmetry	EXCELLENT
Fluorescence	NONE
Inscription(s)	LABGROWN IGI LG494175526

Comments: This Laboratory Grown Diamond was created by Chemical Vapor Deposition (CVD) growth process and may include post-growth treatment.  
Type IIa



	ROUND BRILLIANT	
	<b>6.82 - 6.94 X 3.97 MM</b>	
	Carat Weight:	1 CARAT
	Color Grade:	I
	Clarity Grade:	VS2
	Cut Grade:	IDEAL
	Depth:	61.8%
	Table:	59.5%
	Girdle Medium To Slightly Thick (Faceted)	
	Culet	Poined
	Polish	EXCELLENT
	Symmetry	EXCELLENT
	Fluorescence	NONE
	Inscriptions <sup>a</sup>	LAB-GROWN IGI LABG48176528

Comments:  
**This Laboratory Grown Diamond was created by Chemical Vapor Deposition (CVD) growth process and may include trace amounts of nitrogen treatment.**

Type IIa