



September 25, 2021

IGI Report Number **LG496118282**

Description	LABORATORY GROWN DIAMOND
Shape and Cutting Style	OVAL BRILLIANT

Measurements **11.50 X 8.16 X 5.19 MM**

GRADING RESULTS

Carat Weight	3.10 CARATS
Color Grade	I
Clarity Grade	VS 1

ADDITIONAL GRADING INFORMATION

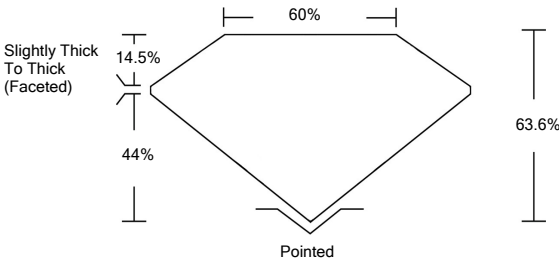
Polish	EXCELLENT
Symmetry	EXCELLENT
Fluorescence	NONE
Inscription(s)	LABGROWN IGI LG496118282

Comments: This Laboratory Grown Diamond was created by Chemical Vapor Deposition (CVD) growth process and may include post-growth treatment.
Type IIa

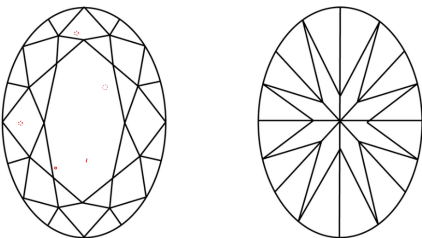
ELECTRONIC COPY

LG496118282

PROPORTIONS



CLARITY CHARACTERISTICS



KEY TO SYMBOLS

Red symbols indicate internal characteristics.
Green symbols indicate external characteristics.

LABORATORY GROWN DIAMOND REPORT

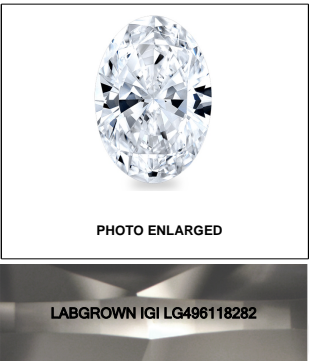
GRADING SCALES

COLOR GRADING SCALE	CL		NC	FT	VLT	LT
	COLORLESS D-F		NEAR COLORLESS G-J	FAINT K-M	VERY LIGHT N-R	LIGHT S-Z
CLARITY (10x) GRADING SCALE	FL	IF	VVS	VS	SI	I
	FLAWLESS INTERNALLY FLAWLESS		VERY VERY SLIGHTLY INCLUDED	VERY SLIGHTLY INCLUDED	SLIGHTLY INCLUDED	INCLUDED

The laboratory grown diamond described in this Report (Report) has been graded, tested, analyzed, examined and/or inscribed by International Gemological Institute (I.G.I.). A laboratory grown diamond is one that has essentially the same chemical, physical and optical properties as a natural diamond. I.G.I. employs and utilizes those techniques and equipment currently available to I.G.I., including, without limitation, 10X magnification, corrected microscope, double microscope, polarizing microscope, spectrophotometer, non-destructive measuring devices, diamond grading and viewing equipment, and other equipment and such other instruments and/or processes as deemed appropriate by I.G.I. This Report includes advanced security features. A duly accredited gemologist or jeweler can advise you with reference to the importance of and interrelationship between color, clarity and carat weight.

THIS REPORT IS NEITHER A GUARANTEE, VALUATION, NOR APPRAISAL OF THE GEMSTONE DESCRIBED HEREIN. PLEASE REVIEW THE LIMITATIONS AND RESTRICTIONS SET FORTH ONLINE. FOR MORE INFORMATION, VISIT WWW.IGI.ORG OR CALL 1-888-BUY-IGI.

© INTERNATIONAL GEMOLOGICAL INSTITUTE, INC.

**LASERSCRIBESM**

© IGI 2020, International Gemological Institute

FD - 10 20

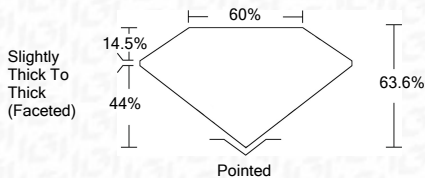
www.igi.org

LABORATORY GROWN DIAMOND REPORT

September 25, 2021	
IIGI Report Number	LG4961182828
Description	LABORATORY GROWN DIAMOND
Shape and Cutting Style	OVAL BRILLIANT
Measurements	11.50 X 8.16 X 5.19 MM

GRADING RESULTS

Carat Weight	3.10 CARATS
Color Grade	I
Clarity Grade	VS 1



ADDITIONAL GRADING INFORMATION

Polish	EXCELLENT
Symmetry	EXCELLENT
Fluorescence	NONE
Inscription(s)	LABGROWN IGI LG496118282

Comments: This Laboratory Grown Diamond was created by Chemical Vapor Deposition (CVD) growth process and may include post-growth treatment.



IGI

September 25, 2021	IGAL Report No LG486118282	3.10 CARATS	I
OVAL BRILLIANT	11.50 X 8.16 X 5.19 MM	VS-1	63.6%
Carat Weight	Color Grade	Clarity Grade	Depth
		Table	Girdle
			Slightly Thick To Thick (Faceted)
		Culet	Poished
		Polish	EXCELLENT
		Symmetry	EXCELLENT
		Fluorescence	NONE
		Inscriptions (if any)	LARGROWN IGI LG486118282
		Comments:	This Laboratory Grown Diamond was created by Chemical Vapor Deposition (CVD) growth process and may include some surface treatment.
			Type IIb

This Laboratory Grown Diamond was created by Chemical Vapor Deposition (CVD) growth process and may include post-growth treatment.