



**ELECTRONIC COPY**

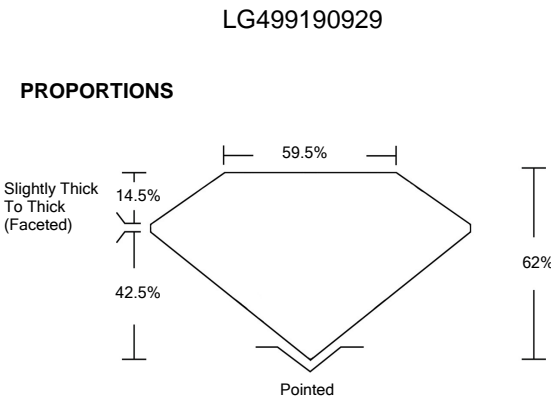
# LABORATORY GROWN DIAMOND REPORT

# LABORATORY GROWN DIAMOND REPORT

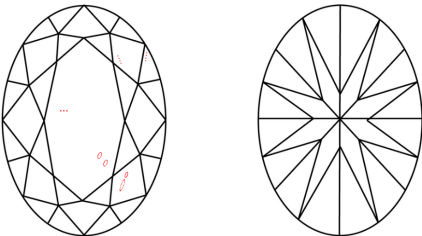
October 20, 2021	
IGI Report Number	LG499190929
Description	LABORATORY GROWN DIAMOND
Shape and Cutting Style	OVAL BRILLIANT
Measurements	11.49 X 8.19 X 5.08 MM
GRADING RESULTS	
Carat Weight	3.02 CARATS
Color Grade	H
Clarity Grade	SI 1

ADDITIONAL GRADING INFORMATION	
Polish	EXCELLENT
Symmetry	EXCELLENT
Fluorescence	NONE
Inscription(s)	LABGROWN IGI LG499190929

Comments: This Laboratory Grown Diamond was created by Chemical Vapor Deposition (CVD) growth process and may include post-growth treatment.  
Type IIa



## CLARITY CHARACTERISTICS



## KEY TO SYMBOLS

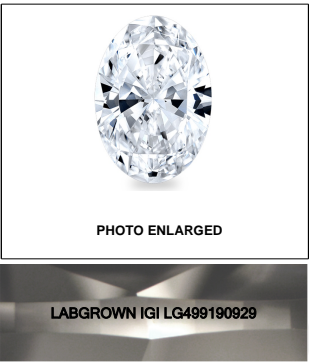
Red symbols indicate internal characteristics.  
Green symbols indicate external characteristics.

## GRADING SCALES

COLOR GRADING SCALE	CL		NC	FT	VLT	LT
	COLORLESS D-F		NEAR COLORLESS G-J	FAINT K-M	VERY LIGHT N-R	LIGHT S-Z
CLARITY (10x) GRADING SCALE	FL	IF	VVS	VS	SI	I
	FLAWLESS INTERIALLY FLAWLESS		VERY VERY SLIGHTLY INCLUDED	VERY SLIGHTLY INCLUDED	SLIGHTLY INCLUDED	INCLUDED

The laboratory grown diamond described in this Report (Report) has been graded, tested, analyzed, examined and/or inscribed by International Gemological Institute (IGI). A laboratory grown diamond is one that has essentially the same chemical, physical and optical properties as a natural diamond. IGI is a company owned and operated by a man (a manufactured product). IGI employs and utilizes those techniques and equipment currently available to IGI, including, without limitation, 10X magnification, corrected triple beam, binocular microscope, color color comparison stones, non-conductive testing, measuring and grading equipment, Diamond View, and other such instruments and/or processes as deemed appropriate by IGI. This Report includes advanced security features. A duly accredited gemologist or jeweler can advise you with relevance the importance of and interrelationship between cut, color, clarity and carat weight.

**THIS REPORT IS NEITHER A GUARANTEE, VALUATION, NOR APPRAISAL OF THE GEMSTONE DESCRIBED HEREIN. PLEASE REVIEW THE LIMITATIONS AND RESTRICTIONS SET FORTH ONLINE FOR THIS REPORT. PLEASE VISIT WWW.IGI.ORG FOR THE LIMITATIONS AND DISCLAIMERS. PLEASE GO TO WWW.IGI.ORG OR CALL 1-888-BUY-IGI.**

**LASERSCRIBE<sup>SM</sup>**

© IGI 2020, International Gemological Institute

FD - 10 20

**www.igi.org**



# IGI

October 20, 2021	IGI Report No. LG498180828		
OVAL BRILLIANT		3.02 CARATS	H
Carat Weight	11.49 x 8.19 x 5.08 MM		SI 1
Color Grade			62%
Clarity Grade			50.5%
Depth			Slightly Thick To Thick (Faced)
Table			Poited
Girdle			EXCELLENT
Culet			EXCELLENT
Polish			NONE
Symmetry			LARGELY IGI LOWER/IGI25
Fluorescence			
Inscriptions (if any)			
Comments:	This Laboratory Grown Diamond was created by Chemical Vapor Deposition (CVD) growth process and may include post-growth treatments. See Appendix A for details. Type Ila		

This Laboratory Grown Diamond was created by Chemical Vapor Deposition (CVD) growth process and may include post-growth treatment.