



ELECTRONIC COPY

LABORATORY GROWN DIAMOND REPORT

LABORATORY GROWN DIAMOND REPORT

LG499191024

PROPORTIONS

Diagram illustrating the proportions of a diamond-shaped gemstone. The proportions are defined by the following measurements:

- Top width: 57.5%
- Left side width: 16%
- Right side width: 44.5%
- Bottom width: 65.5%

The diagram shows a diamond shape with a pointed bottom and a slightly thick top. The proportions are indicated by dimension lines and percentages.

GRADING SCALES

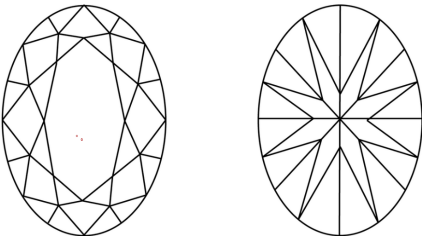
COLOR GRADING SCALE	CL	NC	FT	VLT	LT
	COLORLESS D-F	NEAR COLORLESS G-J	FAINT K-M	VERY LIGHT N-R	LIGHT S-Z
CLARITY (10x) GRADING SCALE	FL	VVS	VS	SI	I
	FLAWLESS INTERNALLY FLAWLESS	VERY VERY SLIGHTLY INCLUDED	VERY SLIGHTLY INCLUDED	SLIGHTLY INCLUDED	INCLUDED

The laboratory grown diamond described in this Report (Report) has been graded, tested, analyzed, examined and/or inscribed by International Gemological Institute (IGI). A laboratory grown diamond is one that has essentially the same chemical, physical and optical properties as a natural diamond. IGI employs and utilizes those techniques and equipment currently available to IGI, including, without limitation, 10X magnification, corrected line type, binocular microscope, master color comparison stones, non-confocal infrared spectroscopy, and other instruments and/or equipment used in such other instruments and/or processes as deemed appropriate by IGI. This Report includes advised security features. A duly accredited gemologist or jeweler can advise you with regard to the importance of and interrelationship between cut, color, clarity and carat weight.

THIS REPORT IS NEITHER A GUARANTEE, VALUATION, NOR APPRAISAL OF THE GEMSTONE DESCRIBED HEREIN. PLEASE REVIEW THE LIMITATIONS AND RESTRICTIONS SET FORTH ONLINE. FOR MORE INFORMATION, VISIT WWW.IGI.ORG OR CALL 1-888-BUY-IGI.

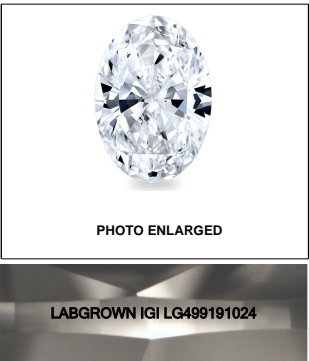
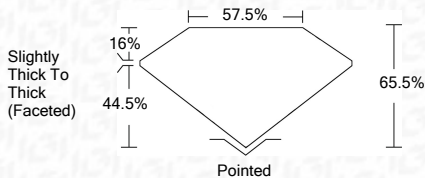
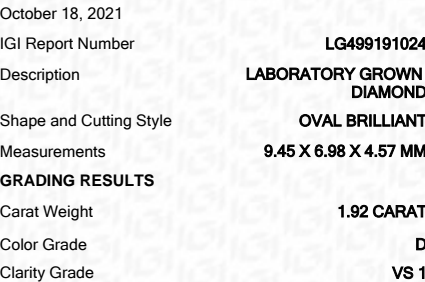
© INTERNATIONAL GEMOLOGICAL INSTITUTE, INC.

CLARITY CHARACTERISTICS



KEY TO SYMBOLS

Red symbols indicate internal characteristics.
Green symbols indicate external characteristics.

**LASERSCRIBESM**

ADDITIONAL GRADING INFORMATION

Polish	EXCELLENT
Symmetry	EXCELLENT
Fluorescence	NONE
Inscription(s)	LABGROWN IGI LG499191024

Comments: As Grown - No indication of post-growth treatment.
This Laboratory Grown Diamond was created by High Pressure High Temperature (HPHT) growth process.
Type II



IGI

October 16, 2021	IGI Report No. LG468191024	
COIAL BRILLIANT	1.92 CARAT	
9.45 X 6.85 X 4.57 MM		
Carat Weight		
Color Grade	D	
Clarity Grade	VS 1	
Depth	65.5%	
Table	57.5%	
Grain	Slightly Thick To Thick (Faceted)	
Culet	Pointed	
Polish	EXCELLENT	
Symmetry	EXCELLENT	
Fluorescence	NONE	
Inscriptions(s)	LAGSDOWN IGI LG468191024	
Comments:	As Grown - No indication of post-growth treatment. This Laboratory Grown Diamond was created by high pressure high temperature (HPHT) Type II process.	

As Grown - No indication of post-growth treatment.
This Laboratory Grown Diamond was created by High Pressure High Temperature (HPHT) growth process.
Type II

