



ELECTRONIC COPY

LABORATORY GROWN DIAMOND REPORT

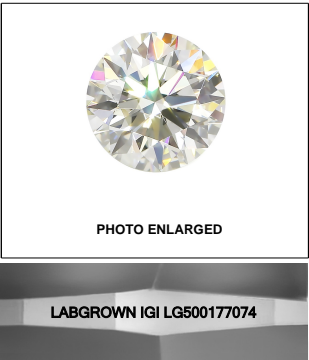
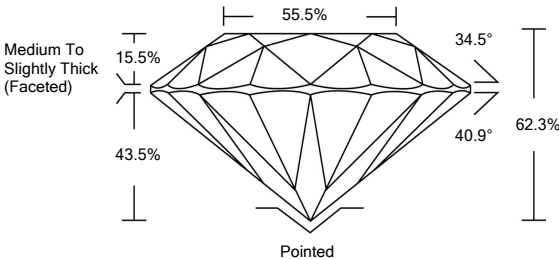
LABORATORY GROWN DIAMOND REPORT

LG500177074

GRADING SCALES

COLOR GRADING SCALE	CL		NC		FT		VLT		LT	
	COLORLESS D-F		NEAR COLORLESS G-J		FAINT K-M		VERY LIGHT N-R		LIGHT S-Z	
CLARITY (10x) GRADING SCALE	FL	IF	VVS		VS		SI		I	
	FLAWLESS		VERY VERY SLIGHTLY INCLUDED		VERY SLIGHTLY INCLUDED		SLIGHTLY INCLUDED		INCLUDED	

PROPORTIONS

**LASERSCRIBESM**

November 17, 2021

IGI Report Number **LG500177074**

Description	LABORATORY GROWN DIAMOND
-------------	-----------------------------

Shape and Cutting Style **ROUND BRILLIANT**

Measurements **7.64 - 7.66 X 4.76 MM**

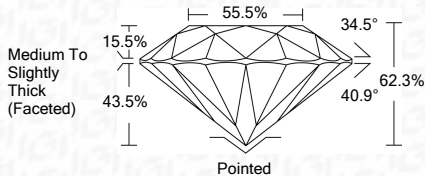
GRADING RESULTS

Carat Weight 1.71 CARAT

Color Grade H

Clarity Grade SI 1

Cut Grade **IDEAL**



ADDITIONAL GRADING INFORMATION

Polish **EXCELLENT**

Symmetry **EXCELLENT**

Fluorescence **NONE**

Inscription(s) **LABGROWN IGI LG500177074**

Comments: This Laboratory Grown Diamond was created by Chemical Vapor Deposition (CVD) growth process and may include post-growth treatment.
Type IIa

IGI

November 17, 2021 IGI Report No. LGS90177074	ROUND BRILLIANT		1.71 CARAT H	Medium To Slightly Thick (natural)	Painted EXCELLENT EXCELLENT NONE LABGROWN IGI LGS90177074
	6.84 - 7.66 X 4.78 MM Carat Weight Color Grade	SI 1 IDEAL 62.3% 62.78 mm 55.5%			
	Clarity Grade Cut Grade Depth Table Girdle				
	Culet Polish Symmetry Fluorescence Inscription(s)				
Comments: This Laboratory Grown Diamond was created by Chemical Vapor Deposition (CVD) growth process and may include post-growth treatments. See also IGI Report No. LGS90177074, Type Iia					

Comments: This Laboratory Grown Diamond was created by Chemical Vapor Deposition (CVD) growth process and may include post-growth treatment.
Type IIa

The laboratory grown diamond described in this Report ("Report") has been graded, tested, analyzed, examined and/or inscribed by International Gemological Institute ("IGI") as a laboratory grown diamond. IGI is a leading international gemological, mineralogical and optical properties as a tested diamond, with the exception of being grown in a man (a manufactured product). IGI employs and utilizes those techniques and equipment currently available to IGI, including, without limitation, 10X magnification, corrected optical microscopy, ultraviolet fluorescence, infrared spectroscopy, Raman spectroscopy, measuring device, Diamond Sure™, Diamond View™, Spectrophotometer and such other instruments and/or processes as deemed appropriate by IGI. This Report includes advanced security features. A duly accredited gemologist or jeweler can advise you with respect to the importance of and interrelationship between cut, color, clarity and carat weight.

THIS REPORT IS NEITHER A GUARANTEE, VALUATION, NOR APPRAISAL OF THE GEMSTONE DESCRIBED HEREIN. PLEASE REVIEW THE LIMITATIONS AND RESTRICTIONS SET FORTH ONLINE FOR THIS REPORT AT WWW.IGI.ORG AND ALL DISCLOSURES, LIMITATIONS AND DISCLAIMERS. PLEASE GO TO WWW.IGI.ORG OR CALL 1-888-BUY-IGI.

© INTERNATIONAL GEMOLOGICAL INSTITUTE, INC.

www.igi.org

© IGI 2020, International Gemological Institute

FD - 10 20



THIS DOCUMENT WAS PRODUCED WITH THE FOLLOWING SECURITY MEASURES: SPECIAL DOCUMENT PAPER, INK SCREENS, WATERMARK, BACKGROUND DESIGNS, HOLOGRAM AND OTHER SECURITY FEATURES NOT LISTED AND DO EXCEED DOCUMENT SECURITY INDUSTRY GUIDELINES