



ELECTRONIC COPY

LABORATORY GROWN DIAMOND REPORT

LABORATORY GROWN DIAMOND REPORT

LG502108985

PROPORTIONS

Diagram illustrating the proportions of a diamond, labeled LG502108985. The diagram shows a diamond shape with various facets and dimensions:

- Top width: 57.5%
- Top facet angle: 35.7°
- Bottom facet angle: 40.5°
- Left side facet angle: 42.5%
- Right side facet angle: 62.3°
- Left side facet angle: 15.5%
- Bottom facet angle: 42.5%
- Bottom facet angle: 62.3%
- Label: Pointed

GRADING SCALES

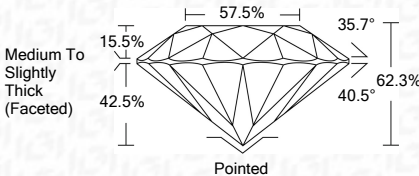
COLOR GRADING SCALE	CL	NC	FT	VLT	LT	
	COLORLESS D-F	NEAR COLORLESS G-J	FAINT K-M	VERY LIGHT N-R	LIGHT S-Z	
CLARITY (10x) GRADING SCALE	FL	IF	VVS	VS	SI	I
	FLAWLESS INTERNALLY FLAWLESS	VERY VERY SLIGHTLY INCLUDED	VERY SLIGHTLY INCLUDED	SLIGHTLY INCLUDED	INCLUDED	

The laboratory grown diamond described in this Report ("Report") has been graded, tested, analyzed, examined and/or inscribed by International Gemological Institute ("IGI"). Laboratory grown diamonds are one of the same chemical, physical and optical properties as mined diamonds. IGI uses the same grading system (a and man) as mined diamonds. IGI employs and utilizes those techniques and equipment currently available to IGI, including, without limitation, 10X magnification, corrected micrographs, ultraviolet light, infrared spectroscopy, Raman spectroscopy, measuring device, Diamond Sure™, Diamond View™, Spectrophotometer and such other instruments and/or processes as deemed appropriate by IGI. This Report includes advanced security features. A duly accredited gemologist or jeweler can advise you with regard to the importance of and interrelationship between cut, color, clarity and carat weight.

THIS REPORT IS NEITHER A GUARANTEE, VALUATION, NOR APPRAISAL OF THE GEMSTONE DESCRIBED HEREIN. PLEASE REVIEW THE LIMITATIONS AND RESTRICTIONS SET FORTH ONLINE. FOR MORE INFORMATION, VISIT WWW.IGI.ORG OR CALL 1-888-BUY-IGI.

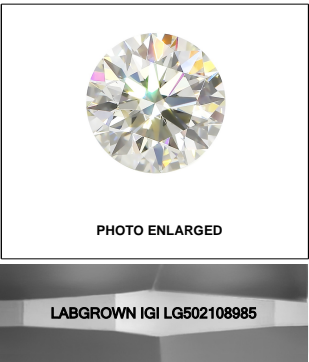
© INTERNATIONAL GEMOLOGICAL INSTITUTE, INC.

November 17, 2021	
IGI Report Number	LG502108985
Description	LABORATORY GROWN DIAMOND
Shape and Cutting Style	ROUND BRILLIANT
Measurements	7.40 - 7.46 X 4.63 MM
GRADING RESULTS	
Carat Weight	1.60 CARAT
Color Grade	E
Clarity Grade	SI 2
Cut Grade	IDEAL



KEY TO SYMBOLS

Red symbols indicate internal characteristics.
Green symbols indicate external characteristics.

**LASERSCRIBESM**

© IGI 2020, International Gemological Institute

FD - 10 20

Comments: As Grown - No indication of post-growth treatment.
This Laboratory Grown Diamond was created by High Pressure High Temperature (HPHT) growth process.
Type II

ADDITIONAL GRADING INFORMATION	
Polish	EXCELLENT
Symmetry	EXCELLENT
Fluorescence	NONE
Inscription(s)	LABGROWN IGI LG502108985

Comments: As Grown - No indication of post-growth treatment.
This Laboratory Grown Diamond was created by High Pressure High Temperature (HPHT) growth process.
Type II



IGI

November 17, 2021	IGI Report No. LGG02108985
ROUND BRILLIANT	
40.740 x 7.46 x 4.63 MM	
Carat Weight	1.60 CARAT
Color Grade	E
Clarity Grade	S/I2
Cut Grade	IDEAL
Depth	62.3%
Table	57.5%
Girdle	Medium To Slightly Thick (Faceted)
Polish	Polished
Symmetry	EXCELLENT
Fluorescence	EXCELLENT
Inscriptions	NONE
As Graded - No indication of post-growth treatment.	LARGROWN IGI LGG02108985
By High Pressure High Temperature (HPHT) Process.	
Type II	

Comments:
As Grown - No indication of post-growth treatment.
This Laboratory Grown Diamond was created by High Pressure High Temperature (HPHT) growth process.
Tune II

Type II