



ELECTRONIC COPY

LABORATORY GROWN DIAMOND REPORT

January 4, 2022

IGI Report Number **LG506103262**

Description	LABORATORY GROWN DIAMOND
-------------	-----------------------------

Shape and Cutting Style **ROUND BRILLIANT**

Measurements 7.16 - 7.18 X 4.60 MM

GRADING RESULTS

Carat Weight **1.50 CARAT**

Color Grade **G**Clarity Grade **VS 2**

Cut Grade **VERY GOOD**

ADDITIONAL GRADING INFORMATION

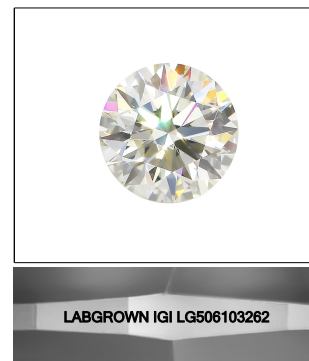
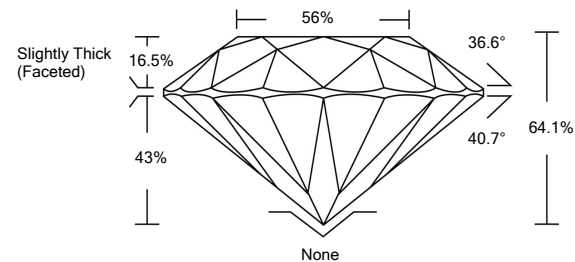
Polish **EXCELLENT**Symmetry **EXCELLENT**Fluorescence **NONE**

Inscription(s) **LABGROWN IGI LG506103262**

Comments: This Laboratory Grown Diamond was created by Chemical Vapor Deposition (CVD) growth process and may include post-growth treatment.
Type IIa

LG506103262

PROPORTIONS

LASERSCRIBESM

Sample Image Used

© IGI 2020, International Gemological Institute

FD - 10 20

LABORATORY GROWN
DIAMOND REPORT

GRADING SCALES

COLOR GRADING SCALE	CL		NC	FT	VL	LT
	COLORLESS D-F		NEAR COLORLESS G-J	FAINT K-M	VERY LIGHT N-R	LIGHT S-Z
CLARITY (10x) GRADING SCALE	FL	IF	VVS	VS	SI	I
	FLAWLESS INTERNALLY FLAWLESS		VERY VERY SLIGHTLY INCLUDED	VERY SLIGHTLY INCLUDED	SLIGHTLY INCLUDED	INCLUDED

LABORATORY GROWN DIAMOND REPORT

January 4, 2022	
IGI Report Number	LG506103262
Description	LABORATORY GROWN

Shape and Cutting Style **ROUND BRILLIANT**

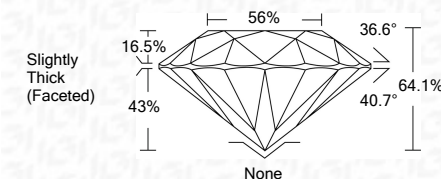
Measurements 7.16 - 7.18 X 4.60 MM

GRADING RESULTS

Carat Weight **1.50 CARAT**

Color Grade **G**Clarity Grade **VVS 2**

Cut Grade **VERY GOOD**



ADDITIONAL GRADING INFORMATION

Polish **EXCELLENT**

Symmetry **EXCELLENT**

Fluorescence **NONE**

Inscription(s)	LABGROWN IGI LG506103262
----------------	--------------------------

Comments: This Laboratory Grown Diamond was created by Chemical Vapor Deposition (CVD) growth process and may include post-growth treatment.
Type IIa



January 4, 2022	IGI Report No. LG506102362
ROUND BRILLIANT	
1.16 CARAT	
Color Grade	
Clarity Grade	
Depth	
Table	
Girdle	
Culet	
Polish	
Symmetry	
Fluorescence	
Inscriptions (if any)	
Comments:	
This Laboratory Growth Diamond was created by Chemical Vapor Deposition (CVD) growth process and may include post-growth treatments.	
Type Ia	