



ELECTRONIC COPY

LABORATORY GROWN DIAMOND REPORT

LABORATORY GROWN DIAMOND REPORT

LG508124687

PROPORTIONS

Diagram illustrating the proportions of a diamond, labeled LG508124687. The diagram shows a diamond shape with various facets and dimensions. The proportions are defined as follows:

- 16% (Top width proportion)
- 43% (Bottom width proportion)
- 57.5% (Top width proportion)
- 36.4° (Top angle)
- 40.9° (Bottom angle)
- 63.5% (Total height proportion)
- Pointed (Label for the bottom facet)

GRADING SCALES

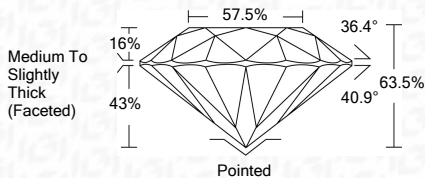
COLOR GRADING SCALE	CL	NC	FT	VLT	LT	
	COLORLESS D-F	NEAR COLORLESS G-J	FAINT K-M	VERY LIGHT N-R	LIGHT S-Z	
CLARITY (10x) GRADING SCALE	FL	IF	VVS	VS	SI	I
	FLAWLESS INTERNALLY FLAWLESS	VERY VERY SLIGHTLY INCLUDED	VERY SLIGHTLY INCLUDED	SLIGHTLY INCLUDED	INCLUDED	

The laboratory grown diamond described in this Report ("Report") has been graded, tested, analyzed, examined and/or inscribed by International Gemological Institute ("IGI"). Laboratory grown diamonds are one of the same chemical, physical and optical properties as mined diamonds and are of the same grade, color and carat weight as mined diamonds. IGI employs and utilizes those techniques and equipment currently available to IGI, including, without limitation, 10X magnification, corrected micrographs, ultraviolet fluorescence, infrared spectroscopy, Raman spectroscopy, measuring device, Diamond Sure™, Diamond View™, Spectrophotometer and such other instruments and/or processes as deemed appropriate by IGI. This Report includes advanced security features. A duly accredited gemologist or jeweler can advise you with regard to the importance of and interrelationship between cut, color, clarity and carat weight.

THIS REPORT IS NEITHER A GUARANTEE, VALUATION, NOR APPRAISAL OF THE GEMSTONE DESCRIBED HEREIN. PLEASE REVIEW THE LIMITATIONS AND RESTRICTIONS SET FORTH ONLINE. FOR THE FULL DISCLOSURE OF THE LIMITATIONS AND DISCLAIMERS, PLEASE GO TO WWW.IGI.ORG OR CALL 1-888-BUY-IGI.

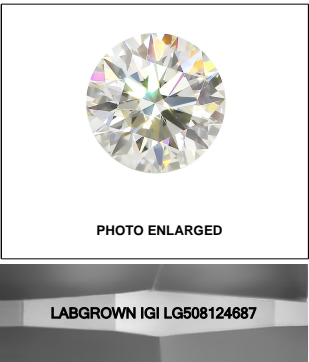
© INTERNATIONAL GEMOLOGICAL INSTITUTE, INC.

January 3, 2022	
IGI Report Number	LG508124687
Description	LABORATORY GROWN DIAMOND
Shape and Cutting Style	ROUND BRILLIANT
Measurements	7.19 - 7.23 X 4.58 MM
GRADING RESULTS	
Carat Weight	1.50 CARAT
Color Grade	D
Clarity Grade	VS 1
Cut Grade	EXCELLENT



KEY TO SYMBOLS

Red symbols indicate internal characteristics.
Green symbols indicate external characteristics.

**LASERSCRIBESM**

© IGI 2020, International Gemological Institute

FD - 10 20

Comments: As Grown - No indication of post-growth treatment.
This Laboratory Grown Diamond was created by High Pressure High Temperature (HPHT) growth process.
Type II

ADDITIONAL GRADING INFORMATION	
Polish	EXCELLENT
Symmetry	EXCELLENT
Fluorescence	NONE
Inscription(s)	LABGROWN IGI LG058124687

Comments: As Grown - No indication of post-growth treatment.
This Laboratory Grown Diamond was created by High Pressure High Temperature (HPHT) growth process.
Type II



IGI

January 3, 2022	IGI Report No. L6505124687
ROUND BRILLIANT	
1.50 CARAT	
7.19 - 7.23 X 4.55 MM	
Carat Weight	
Color Grade	D
Clarity Grade	VS 1
Cut Grade	EXCELLENT
Depth	63.5%
Table	57.5%
Girdle	Medium To Slightly Thick (Faceted)
Culet	Pointed
Polish	EXCELLENT
Symmetry	EXCELLENT
Fluorescence	NONE
Inscriptions	LARGROWN IGI L6505124687
Comments:	As Grown - No indication of post-growth treatment. By high pressure high temperature (HPHT) process. Type II