



ELECTRONIC COPY

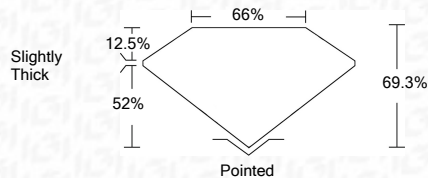
LABORATORY GROWN DIAMOND REPORT

LABORATORY GROWN DIAMOND REPORT

December 30, 2021	
IGI Report Number	LG5081566833
Description	LABORATORY GROWN DIAMOND
Shape and Cutting Style	CUT CORNERED RECTANGULAR MODIFIED BRILLIANT
Measurements	9.47 X 7.32 X 5.07 MM

GRADING RESULTS

Carat Weight	3.21 CARATS
Color Grade	H
Clarity Grade	VS 1



ADDITIONAL GRADING INFORMATION

Polish	VERY GOOD
Symmetry	EXCELLENT
Fluorescence	NONE
Inscription(s)	LABGROWN IGI LG508156683

Comments: This Laboratory Grown Diamond was created by Chemical Vapor Deposition (CVD) growth process and may include post-growth treatment.
Type IIa



IGI

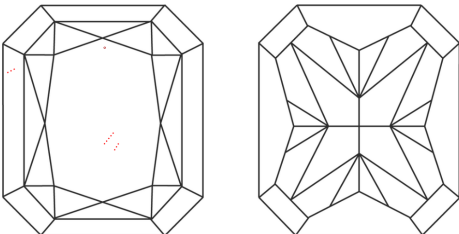
December 30, 2021	IGI Report No. LGS09156863	CUT CORNERED RECT. MODIFIED BRILLIANT	3.21 CARATS	H	VS 1	68.3%	68%	Slightly Thick	Poited	VERY GOOD	NONE	LARGROWN IGI Lab#0156863	This Laboratory Vapour Diamond was created by Chemical Vapor Deposition (CVD) growth process and may include post-growth treatments.
		Carat Weight	48.47 X 7.32 X 5.07 MM	Color Grade					Culet	Polish	Fluorescence	Comments:	Type Ia
				Clarity Grade						Symmetry	Inscriptions		

PROPORTIONS

Diagram illustrating the cross-section of a diamond-shaped structure. The dimensions are labeled as follows:

- Top width: 66%
- Top-left corner thickness: 12.5%
- Bottom-left corner thickness: 52%
- Right height: 69.3%
- Bottom tip: Pointed

CLARITY CHARACTERISTICS



KEY TO SYMBOLS

Red symbols indicate internal characteristics.
Green symbols indicate external characteristics.

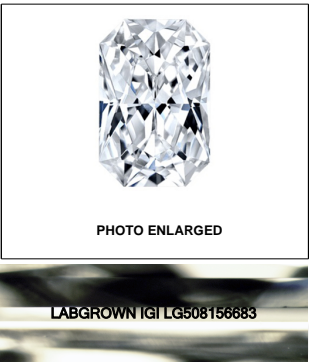
GRADING SCALES

COLOR GRADING SCALE	CL	NC	FT	VLT	LT
	COLORLESS D-F	NEAR COLORLESS G-J	FAINT K-M	VERY LIGHT N-R	LIGHT S-Z
CLARITY (10x) GRADING SCALE	FL	VVS	VS	SI	I
	FLAWLESS INTERNALLY FLAWLESS	VERY VERY SLIGHTLY INCLUDED	VERY SLIGHTLY INCLUDED	SLIGHTLY INCLUDED	INCLUDED

The laboratory grown diamond described in this Report (Report) has been graded, tested, analyzed, examined and/or inscribed by International Gemological Institute (I.G.I.). A laboratory grown diamond is one that has essentially the same chemical, physical and optical properties as a natural diamond. I.G.I. employs and utilizes those techniques and equipment currently available to I.G.I., including, without limitation, 10X magnification, corrected microscope, double microscope, polarized light microscope, non-destructive optical measuring devices, diamond grading and viewing equipment, and other instruments and instruments and/or processes as deemed appropriate by I.G.I. This Report includes advanced security features. A duly accredited gemologist or jeweler can advise you with reference to the importance of and interrelationship between color, clarity and carat weight.

THIS REPORT IS NEITHER A GUARANTEE, VALUATION, NOR APPRAISAL OF THE GEMSTONE DESCRIBED HEREIN. PLEASE REVIEW THE LIMITATIONS AND RESTRICTIONS SET FORTH ONLINE. FOR FURTHER INFORMATION, VISIT WWW.IGI.ORG OR CALL 1-888-BUY-IGI.

© INTERNATIONAL GEMOLOGICAL INSTITUTE, INC.

**LASERSCRIBESM**

© IGI 2020, International Gemological Institute

FD - 10 20

www.igi.org

THIS DOCUMENT WAS PRODUCED WITH THE FOLLOWING SECURITY MEASURES: SPECIAL DOCUMENT PAPER, INK SCREENS, WATERMARK BACKGROUND DESIGNS, HOLOGRAM AND OTHER SECURITY FEATURES NOT LISTED AND DO EXCEED DOCUMENT SECURITY INDUSTRY GUIDELINES