



ELECTRONIC COPY

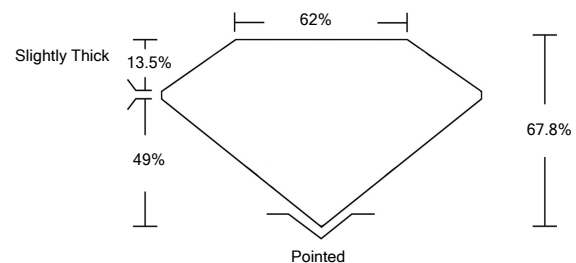
LG512204301

LABORATORY GROWN DIAMOND REPORT

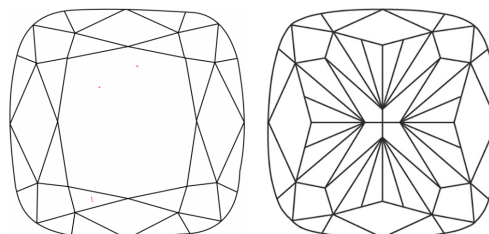
GRADING SCALES

COLOR GRADING SCALE	CL	NC	FT	VLT	LT	
	COLORLESS D-F	NEAR COLORLESS G-J	FAINT K-M	VERY LIGHT N-R	LIGHT S-Z	
CLARITY (10x) GRADING SCALE	FL	IF	VVS	VS	SI	I
	FLAWLESS INTERNALLY FLAWLESS	VERY VERY SLIGHTLY INCLUDED	VERY SLIGHTLY INCLUDED	SLIGHTLY INCLUDED	INCLUDED	

PROPORTIONS

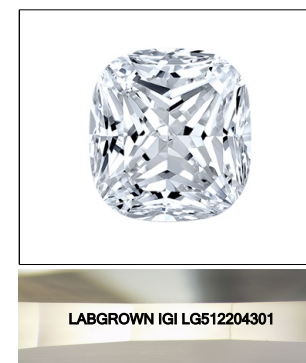


CLARITY CHARACTERISTICS



KEY TO SYMBOLS

Red symbols indicate internal characteristics.
Green symbols indicate external characteristics.



LASERSCRIBESM

Sample Image Used

January 22, 2022

IGI Report Number

LG512204301

Description

**LABORATORY GROWN
DIAMOND**

Shape and Cutting Style

**SQUARE CUSHION
BRILLIANT**

Measurements

7.13 X 7.01 X 4.75 MM

GRADING RESULTS

Carat Weight

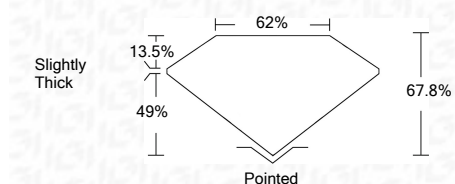
2.09 CARATS

Color Grade

E

Clarity Grade

VS 1



ADDITIONAL GRADING INFORMATION

Polish

VERY GOOD

Symmetry

EXCELLENT

Fluorescence

NONE

Inscription(s)

LABGROWN IGI LG512204301

Comments: This Laboratory Grown Diamond was created by Chemical Vapor Deposition (CVD) growth process and may include post-growth treatment.
Type IIa

January 22, 2022

IGI Report Number

LG512204301

Description

**LABORATORY GROWN
DIAMOND**

Shape and Cutting Style

SQUARE CUSHION BRILLIANT

Measurements

7.13 X 7.01 X 4.75 MM

GRADING RESULTS

Carat Weight

2.09 CARATS

Color Grade

E

Clarity Grade

VS 1

ADDITIONAL GRADING INFORMATION

Polish

VERY GOOD

Symmetry

EXCELLENT

Fluorescence

NONE

Inscription(s)

LABGROWN IGI LG512204301

Comments: This Laboratory Grown Diamond was created by Chemical Vapor Deposition (CVD) growth process and may include post-growth treatment.
Type IIa



IGI

January 22, 2022
IGI Report No. LG512204301
SQUARE CUSHION BRILLIANT
7.13 X 7.01 X 4.75 MM
Carat Weight
2.09 CARATS
Color Grade
E
Clarity Grade
VS 1
Depth
67.8%
Table
62%
Girdle
Slightly Thick
Culet
Pointed
Polish
VERY GOOD
Symmetry
EXCELLENT
Fluorescence
NONE
Inscription(s)
LABGROWN IGI LG512204301
Comments:
This Laboratory Grown Diamond was created by Chemical Vapor Deposition (CVD) growth process and may include post-growth treatment.
Type IIa