

INTERNATIONAL
GEMOLOGICAL
INSTITUTE

ELECTRONIC COPY

LABORATORY GROWN DIAMOND REPORT

January 29, 2022

IGI Report Number

LG512233754

Description

LABORATORY GROWN
DIAMOND

Shape and Cutting Style

OVAL BRILLIANT

Measurements

9.91 X 7.05 X 4.37 MM

GRADING RESULTS

Carat Weight

2.01 CARATS

Color Grade

F

Clarity Grade

VS 1

ADDITIONAL GRADING INFORMATION

Polish

EXCELLENT

Symmetry

EXCELLENT

Fluorescence

NONE

Inscription(s)

LABGROWN IGI LG512233754

Comments: This Laboratory Grown Diamond was created by Chemical Vapor Deposition (CVD) growth process and may include post-growth treatment.
Type IIa

LABORATORY GROWN DIAMOND REPORT

January 29, 2022

IGI Report Number

LG512233754

Description

LABORATORY GROWN
DIAMOND

Shape and Cutting Style

OVAL BRILLIANT

Measurements

9.91 X 7.05 X 4.37 MM

GRADING RESULTS

Carat Weight

2.01 CARATS

Color Grade

F

Clarity Grade

VS 1

ADDITIONAL GRADING INFORMATION

Polish

EXCELLENT

Symmetry

EXCELLENT

Fluorescence

NONE

Inscription(s)

LABGROWN IGI LG512233754

Comments: This Laboratory Grown Diamond was created by Chemical Vapor Deposition (CVD) growth process and may include post-growth treatment.
Type IIa

LABORATORY GROWN DIAMOND REPORT

January 29, 2022

IGI Report No LG512233754

OVAL BRILLIANT

9.91 X 7.05 X 4.37 MM

Carat Weight

2.01 CARATS

Color Grade

F

Clarity Grade

VS 1

Depth

62%

Table

59%

Girdle

Slightly Thick To Thick (Faceted)

Culet

Pointed

Polish

EXCELLENT

Symmetry

EXCELLENT

Fluorescence

NONE

Inscription(s)

LABGROWN IGI LG512233754

Comments:

This Laboratory Grown Diamond was created by Chemical Vapor Deposition (CVD) growth process and may include post-growth treatment.
Type IIa

LABORATORY GROWN DIAMOND REPORT

January 29, 2022

IGI Report No LG512233754

OVAL BRILLIANT

9.91 X 7.05 X 4.37 MM

Carat Weight

2.01 CARATS

Color Grade

F

Clarity Grade

VS 1

Depth

62%

Table

59%

Girdle

Slightly Thick To Thick (Faceted)

Culet

Pointed

Polish

EXCELLENT

Symmetry

EXCELLENT

Fluorescence

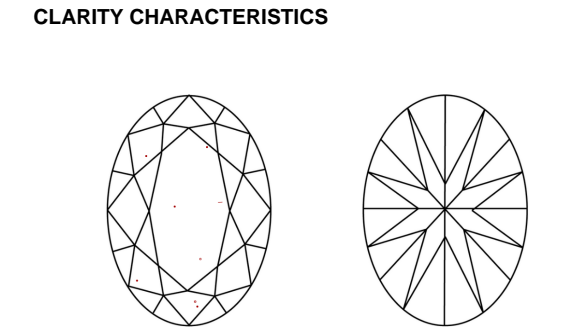
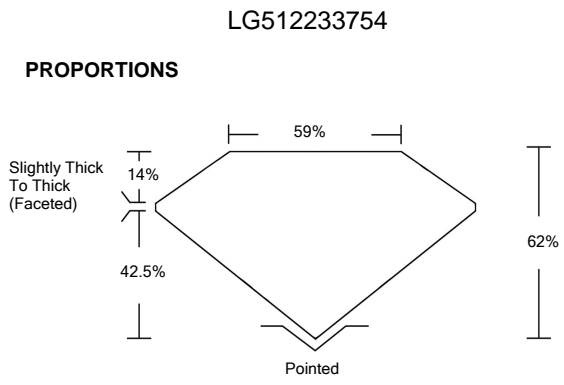
NONE

Inscription(s)

LABGROWN IGI LG512233754

Comments:

This Laboratory Grown Diamond was created by Chemical Vapor Deposition (CVD) growth process and may include post-growth treatment.
Type IIa

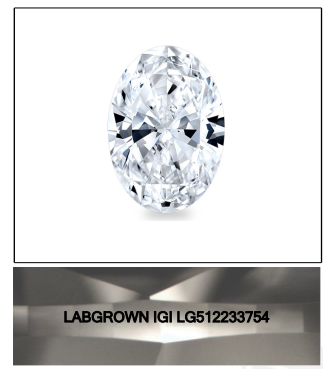


KEY TO SYMBOLS

Red symbols indicate internal characteristics.
Green symbols indicate external characteristics.

GRADING SCALES

COLOR GRADING SCALE	CL		NC		FT		VLT		LT	
	COLORLESS D-F		NEAR COLORLESS G-J		FAINT K-M		VERY LIGHT N-R		LIGHT S-Z	
CLARITY (10x) GRADING SCALE	FL	IF	VVS		VS		SI		I	
	FLAWLESS INTERNALLY FLAWLESS		VERY VERY SLIGHTLY INCLUDED		VERY SLIGHTLY INCLUDED		SLIGHTLY INCLUDED		INCLUDED	



LASERSCRIBESM

Sample Image Used

January 29, 2022

IGI Report Number

LG512233754

Description

LABORATORY GROWN DIAMOND

Shape and Cutting Style

OVAL BRILLIANT

Measurements

9.91 X 7.05 X 4.37 MM

GRADING RESULTS

Carat Weight

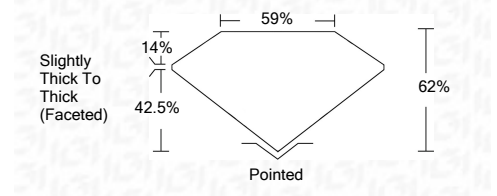
2.01 CARATS

Color Grade

F

Clarity Grade

VS 1



ADDITIONAL GRADING INFORMATION

Polish

EXCELLENT

Symmetry

EXCELLENT

Fluorescence

NONE

Inscription(s)

LABGROWN IGI LG512233754

Comments: This Laboratory Grown Diamond was created by Chemical Vapor Deposition (CVD) growth process and may include post-growth treatment.
Type IIa