



LABORATORY GROWN DIAMOND REPORT

ADDITIONAL GRADING INFORMATION

Polish	EXCELLENT
Symmetry	EXCELLENT
Fluorescence	NONE
Inscription(s)	LABGROWN IGI LG514253617

Comments: As Grown - No indication of post-growth treatment.
This Laboratory Grown Diamond was created by High Pressure High Temperature (HPHT) growth process.
Type II

LG514253617

PROPORTIONS

Medium To Slightly Thick (Faceted)

58%

36.1°

40.8°

15.5%

43%

62.5%

Pointed

CLARITY CHARACTERISTICS

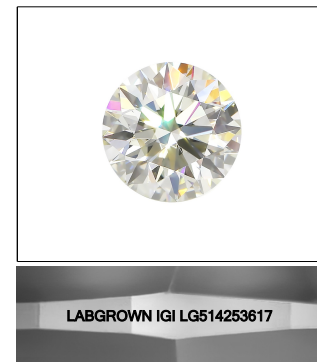
KEY TO SYMBOLS

Red symbols indicate internal characteristics.
Green symbols indicate external characteristics.

LABORATORY GROWN
DIAMOND REPORT

GRADING SCALES

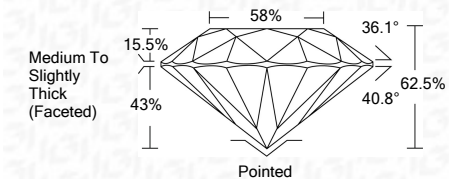
COLOR GRADING SCALE	CL		NC	FT	VL	LT
	COLORLESS D-F		NEAR COLORLESS G-J	FAINT K-M	VERY LIGHT N-R	LIGHT S-Z
CLARITY (10x) GRADING SCALE	FL	IF	VVS	VS	SI	I
	FLAWLESS INTERNALLY	FLAWLESS EXTERNALLY	VERY VERY SLIGHTLY INCLUDED	VERY SLIGHTLY INCLUDED	SLIGHTLY INCLUDED	INCLUDED



LASERSCRIBESM
Sample Image Used

LABORATORY GROWN DIAMOND REPORT

January 22, 2022	
IGI Report Number	LG514253617
Description	LABORATORY GROWN DIAMOND
Shape and Cutting Style	ROUND BRILLIANT
Measurements	6.73 - 6.76 X 4.22 MM
GRADING RESULTS	
Carat Weight	1.20 CARAT
Color Grade	E
Clarity Grade	VVS 2
Cut Grade	IDEAL



ADDITIONAL GRADING INFORMATION	
Polish	EXCELLENT
Symmetry	EXCELLENT
Fluorescence	NONE
Inscription(s)	LABGROWN IGI LG514253617

Comments: As Grown - No indication of post-growth treatment.
This Laboratory Grown Diamond was created by High Pressure High Temperature (HPHT) growth process.
Type II



IGI

January 22, 2022	IGI Report No. LG5423817
ROUND BRILLIANT	
Carat Weight	1.20 CARAT
Color Grade	E
Clarity Grade	VVS 2
Cut Grade	IDEAL
Depth	62.5%
Table	58%
Girdle	Medium to Slightly Thick (Faceted)
Culet	Pointed
Polish	EXCELLENT
Symmetry	EXCELLENT
Fluorescence	NONE
Inscriptions	LABGROWN IGI LG5423817
Comments:	
As Grown - No indication of post-growth	
The Laboratory Grown Diamond was created by High Pressure High Temperature (HPHT) growth process.	
Type II	

