

INTERNATIONAL
GEMOLOGICAL
INSTITUTE

ELECTRONIC COPY

LABORATORY GROWN DIAMOND REPORT

January 27, 2022

IGI Report Number

LG514264846

Description

LABORATORY GROWN
DIAMOND

Shape and Cutting Style

ROUND BRILLIANT

Measurements

9.20 - 9.26 X 5.73 MM

GRADING RESULTS

Carat Weight

3.02 CARATS

Color Grade

F

Clarity Grade

VS 1

Cut Grade

IDEAL

ADDITIONAL GRADING INFORMATION

Polish

EXCELLENT

Symmetry

EXCELLENT

Fluorescence

NONE

Inscription(s)

LABGROWN IGI LG514264846

Comments: This Laboratory Grown Diamond was created by Chemical Vapor Deposition (CVD) growth process and may include post-growth treatment.
Type IIa

LABORATORY GROWN DIAMOND REPORT

January 27, 2022

IGI Report Number

LG514264846

Description

LABORATORY GROWN
DIAMOND

Shape and Cutting Style

ROUND BRILLIANT

Measurements

9.20 - 9.26 X 5.73 MM

GRADING RESULTS

Carat Weight

3.02 CARATS

Color Grade

F

Clarity Grade

VS 1

Cut Grade

IDEAL

ADDITIONAL GRADING INFORMATION

Polish

EXCELLENT

Symmetry

EXCELLENT

Fluorescence

NONE

Inscription(s)

LABGROWN IGI LG514264846

Comments: This Laboratory Grown Diamond was created by Chemical Vapor Deposition (CVD) growth process and may include post-growth treatment.
Type IIa

LABORATORY GROWN DIAMOND REPORT

January 27, 2022

IGI Report No. LG514264846

ROUND BRILLIANT

9.20 - 9.26 X 5.73 MM

Carat Weight

3.02 CARATS

Color Grade

F

Clarity Grade

VS 1

Cut Grade

IDEAL

Depth

62%

Table

59%

Girdle

Medium (Faceted)

Culet

Pointed

Polish

EXCELLENT

Symmetry

EXCELLENT

Fluorescence

NONE

Inscription(s)

LABGROWN IGI LG514264846

Comments: This Laboratory Grown Diamond was created by Chemical Vapor Deposition (CVD) growth process and may include post-growth treatment.
Type IIa

LABORATORY GROWN DIAMOND REPORT

January 27, 2022

IGI Report No. LG514264846

ROUND BRILLIANT

9.20 - 9.26 X 5.73 MM

Carat Weight

3.02 CARATS

Color Grade

F

Clarity Grade

VS 1

Cut Grade

IDEAL

Depth

62%

Table

59%

Girdle

Medium (Faceted)

Culet

Pointed

Polish

EXCELLENT

Symmetry

EXCELLENT

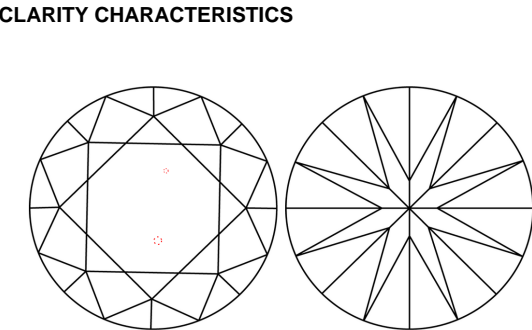
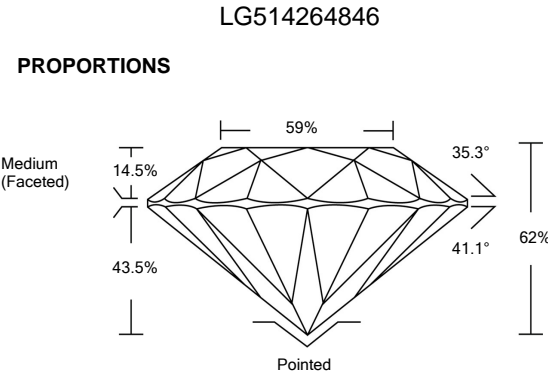
Fluorescence

NONE

Inscription(s)

LABGROWN IGI LG514264846

Comments: This Laboratory Grown Diamond was created by Chemical Vapor Deposition (CVD) growth process and may include post-growth treatment.
Type IIa

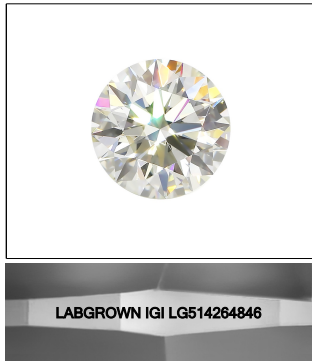


KEY TO SYMBOLS

Red symbols indicate internal characteristics.
Green symbols indicate external characteristics.

GRADING SCALES

COLOR GRADING SCALE	CL		NC		FT		VLT		LT	
	COLORLESS D-F		NEAR COLORLESS G-J		FAINT K-M		VERY LIGHT N-R		LIGHT S-Z	
CLARITY (10x) GRADING SCALE	FL		VVS		VS		SI		I	
	FLAWLESS INTERNALLY FLAWLESS		VERY VERY SLIGHTLY INCLUDED		VERY SLIGHTLY INCLUDED		SLIGHTLY INCLUDED		INCLUDED	



LASERSCRIBESM

Sample Image Used



January 27, 2022

IGI Report No. LG514264846

ROUND BRILLIANT

9.20 - 9.26 X 5.73 MM

Carat Weight

3.02 CARATS

Color Grade

F

Clarity Grade

VS 1

Cut Grade

IDEAL

Depth

62%

Table

59%

Girdle

Medium (Faceted)

Culet

Pointed

Polish

EXCELLENT

Symmetry

EXCELLENT

Fluorescence

NONE

Inscription(s)

LABGROWN IGI LG514264846

Comments: This Laboratory Grown Diamond was created by Chemical Vapor Deposition (CVD) growth process and may include post-growth treatment.
Type IIa