



LABORATORY GROWN DIAMOND REPORT

Comments: As Grown - No indication of post-growth treatment.
This Laboratory Grown Diamond was created by High Pressure High Temperature (HPHT) growth process.
Type II

Diagram illustrating the proportions of a diamond-shaped stone (LG514270159). The stone is labeled "Medium To Slightly Thick (Faceted)" and "Pointed". The proportions are defined by the following measurements:

- Top width: 15%
- Bottom width: 44%
- Overall width: 60.5%
- Overall height: 63.4%

CLARITY CHARACTERISTICS

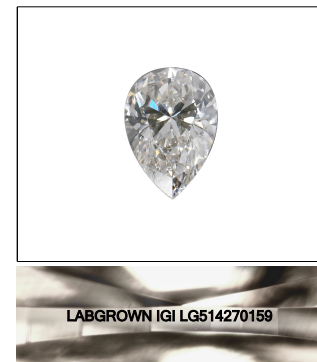
KEY TO SYMBOLS

Red symbols indicate internal characteristics.
Green symbols indicate external characteristics.

LABORATORY GROWN
DIAMOND REPORT

GRADING SCALES

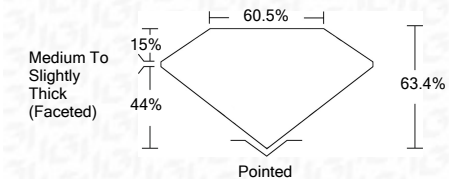
COLOR GRADING SCALE	CL		NC	FT	VLT	LT
	COLORLESS D-F		NEAR COLORLESS G-J	FAINT K-M	VERY LIGHT N-R	LIGHT S-Z
CLARITY (10x) GRADING SCALE	FL	IF	VVS	VS	SI	I
	FLAWLESS INTERNALLY INCLUDED		VERY VERY SLIGHTLY INCLUDED	VERY SLIGHTLY INCLUDED	SLIGHTLY INCLUDED	INCLUDED



LASERSCRIBESM
Sample Image Used

LABORATORY GROWN DIAMOND REPORT

January 27, 2022	
IGI Report Number	LG514270159
Description	LABORATORY GROWN DIAMOND
Shape and Cutting Style	PEAR BRILLIANT
Measurements	9.31 X 5.68 X 3.60 MM
GRADING RESULTS	
Carat Weight	1.13 CARAT
Color Grade	D
Clarity Grade	VVS 2



ADDITIONAL GRADING INFORMATION	
Polish	EXCELLENT
Symmetry	EXCELLENT
Fluorescence	NONE
Inscription(s)	LABGROWN IGI LG514270159

Comments: As Grown - No indication of post-growth treatment.
This Laboratory Grown Diamond was created by High Pressure High Temperature (HPHT) growth process.
Type II



www.igi.org

© IGI 2020, International Gemological Institute

FD - 10 20



January 27, 2022	IGI Report No. LG54270189
PEAR BRILLIANT	
3.31 X 5.68 X 3.60 MM	
Carat Weight	
Color Grade	1.18 CARAT
Clarity Grade	VVS 2
Depth	63.4%
Table	60.5%
Girdle	Medium To Slightly Thick (Feetted)
Culet	Pointed
Polish	EXCELLENT
Symmetry	EXCELLENT
Fluorescence	NONE
Inscriptions(s)	LABGROWN IGI LG54270189
Comments:	As Grown - No indication of post-growth treatment. This Laboratory Grown Diamond was created by High Pressure High Temperature (HPHT) Type II process.