



ELECTRONIC COPY

LABORATORY GROWN DIAMOND REPORT

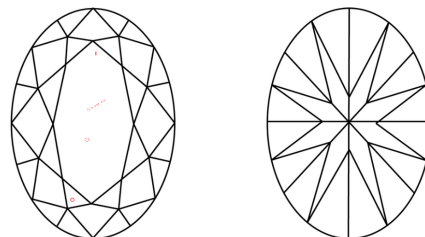
February 8, 2022	
IGI Report Number	LG515218372
Description	LABORATORY GROWN DIAMOND
Shape and Cutting Style	OVAL BRILLIANT
Measurements	10.79 X 7.63 X 4.80 MM
GRADING RESULTS	
Carat Weight	2.50 CARATS
Color Grade	F
Clarity Grade	SI 1
ADDITIONAL GRADING INFORMATION	
Polish	EXCELLENT
Symmetry	EXCELLENT
Fluorescence	NONE
Inscription(s)	LABGROWN IGI LG515218372

Comments: This Laboratory Grown Diamond was created by Chemical Vapor Deposition (CVD) growth process and may include post-growth treatment.
Type IIa

Diagram illustrating the proportions of a diamond-shaped tile (LG515218372). The tile is oriented with its vertices at the top, bottom, left, and right. The proportions are defined by percentages of the overall dimensions:

- Top Width:** 61.5% of the total width.
- Left Facet:** 15% of the total height (Medium To Slightly Thick Faceted).
- Bottom Facet:** 43.5% of the total height (Pointed).
- Right Height:** 62.9% of the total height.

CLARITY CHARACTERISTICS



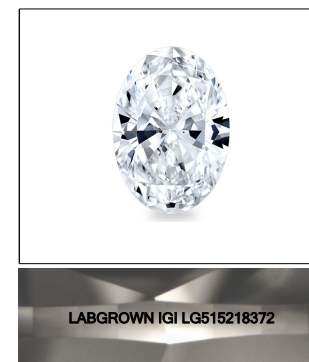
KEY TO SYMBOLS

Red symbols indicate internal characteristics.
Green symbols indicate external characteristics.

LABORATORY GROWN
DIAMOND REPORT

GRADING SCALES

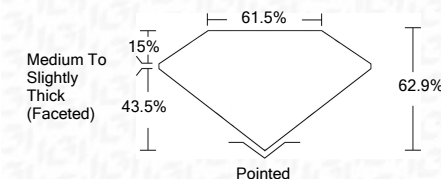
COLOR GRADING SCALE	CL		NC	FT	VLT	LT
	COLORLESS D-F		NEAR COLORLESS G-J	FAINT K-M	VERY LIGHT N-R	LIGHT S-Z
CLARITY (10x) GRADING SCALE	FL	IF	VVS	VS	SI	I
	FLAWLESS INTERNALLY FLAWLESS		VERY VERY SLIGHTLY INCLUDED	VERY SLIGHTLY INCLUDED	SLIGHTLY INCLUDED	INCLUDED

LASERSCRIBESM

Sample Image Used



February 8, 2022	
IGI Report Number	LG515218372
Description	LABORATORY GROWN DIAMOND
Shape and Cutting Style	OVAL BRILLIANT
Measurements	10.79 X 7.63 X 4.80 MM
GRADING RESULTS	
Carat Weight	2.50 CARATS
Color Grade	F
Clarity Grade	SI 1



ADDITIONAL GRADING INFORMATION

Polish	EXCELLENT
Symmetry	EXCELLENT
Fluorescence	NONE
Inscription(s)	LABGROWN IGI LG515218372

Comments: This Laboratory Grown Diamond was created by Chemical Vapor Deposition (CVD) growth process and may include post-growth treatment.
Type IIa



	F	2.50 CARATS	
OVAL BRILLIANT	10.79 X 7.83 X 4.80 MM		
Carat Weight	Color Grade		
Clarity Grade	Sil 1		
Depth	62.9%		
Table	61.5%		
Grade	Medium to Slightly Thick (Faced)		
Culet	Painted		
Polish	EXCELLENT		
Symmetry	EXCELLENT		
Fluorescence	NONE		
Inscriptions(s)	LABGROWN IGI LG516218372		
Comments:			
This Laboratory Grown Diamond was created by Chemical Vapor Deposition (CVD) growth process and may include post-growth treatments.			
Type Ia			

