

INTERNATIONAL
GEMOLOGICAL
INSTITUTE

ELECTRONIC COPY

LABORATORY GROWN DIAMOND REPORT

February 15, 2022

IGI Report Number

LG516255788

Description

LABORATORY GROWN
DIAMOND

Shape and Cutting Style

PEAR BRILLIANT

Measurements

10.90 X 7.24 X 4.38 MM

GRADING RESULTS

Carat Weight

2.04 CARATS

Color Grade

G

Clarity Grade

VS 2

ADDITIONAL GRADING INFORMATION

Polish

VERY GOOD

Symmetry

VERY GOOD

Fluorescence

NONE

Inscription(s)

LABGROWN IGI LG516255788

Comments: As Grown - No indication of post-growth treatment.
This Laboratory Grown Diamond was created by High Pressure High Temperature (HPHT) growth process.
Type II

LABORATORY GROWN DIAMOND REPORT

February 15, 2022

IGI Report Number

LG516255788

Description

LABORATORY GROWN
DIAMOND

Shape and Cutting Style

PEAR BRILLIANT

Measurements

10.90 X 7.24 X 4.38 MM

GRADING RESULTS

Carat Weight

2.04 CARATS

Color Grade

G

Clarity Grade

VS 2

ADDITIONAL GRADING INFORMATION

Polish

VERY GOOD

Symmetry

VERY GOOD

Fluorescence

NONE

Inscription(s)

LABGROWN IGI LG516255788

Comments: As Grown - No indication of post-growth treatment.
This Laboratory Grown Diamond was created by High Pressure High Temperature (HPHT) growth process.
Type II

LABORATORY GROWN DIAMOND REPORT

February 15, 2022

IGI Report No. LG516255788

PEAR BRILLIANT

10.90 X 7.24 X 4.38 MM

Carat Weight

2.04 CARATS

Color Grade

G

Clarity Grade

VS 2

Depth

60.5%

Table

61%

Girdle

Medium To Slightly Thick (Faceted)

Culet

Pointed

Polish

VERY GOOD

Symmetry

VERY GOOD

Fluorescence

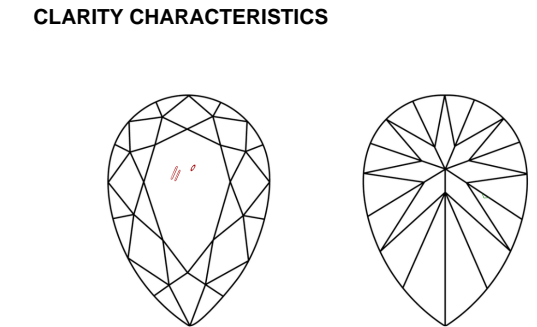
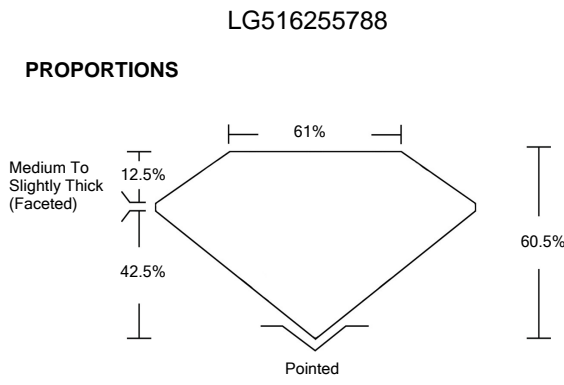
NONE

Inscription(s)

LABGROWN IGI LG516255788

Comments:

As Grown - No indication of post-growth treatment.
This Laboratory Grown Diamond was created by High Pressure High Temperature (HPHT) growth process.
Type II



KEY TO SYMBOLS

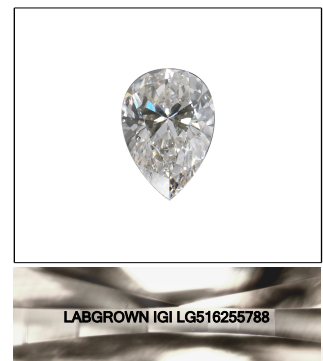
Red symbols indicate internal characteristics.
Green symbols indicate external characteristics.

LABORATORY GROWN DIAMOND REPORT

GRADING SCALES

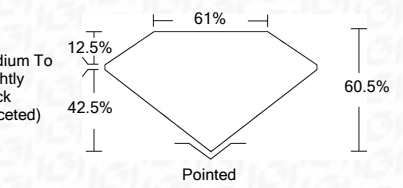
COLOR GRADING SCALE	CL	NC	FT	VLT	LT
	COLORLESS D-F	NEAR COLORLESS G-J	FAINT K-M	VERY LIGHT N-R	LIGHT S-Z

CLARITY (10x) GRADING SCALE	FL	IF	VVS	VS	SI	I
	FLAWLESS INTERNALLY FLAWLESS		VERY VERY SLIGHTLY INCLUDED	VERY SLIGHTLY INCLUDED	SLIGHTLY INCLUDED	INCLUDED



LASERSCRIBESM

Sample Image Used



ADDITIONAL GRADING INFORMATION

Polish

Symmetry

Fluorescence

Inscription(s)

VERY GOOD

VERY GOOD

NONE

LABGROWN IGI LG516255788

Comments: As Grown - No indication of post-growth treatment.
This Laboratory Grown Diamond was created by High Pressure High Temperature (HPHT) growth process.
Type II



February 15, 2022	IGI Report No. LG516255788	PEAR BRILLIANT	10.90 X 7.24 X 4.38 MM	Carat Weight	2.04 CARATS	Color Grade	G	Clarity Grade	VS 2	Depth	60.5%	Table	61%	Girdle	Medium To Slightly Thick (Faceted)	Culet	Pointed	Polish	VERY GOOD	Symmetry	VERY GOOD	Fluorescence	NONE	Inscription(s)	LABGROWN IGI LG516255788	Comments:	As Grown - No indication of post-growth treatment. This Laboratory Grown Diamond was created by High Pressure High Temperature (HPHT) growth process. Type II
-------------------	----------------------------	----------------	------------------------	--------------	-------------	-------------	---	---------------	------	-------	-------	-------	-----	--------	------------------------------------	-------	---------	--------	-----------	----------	-----------	--------------	------	----------------	--------------------------	-----------	---