



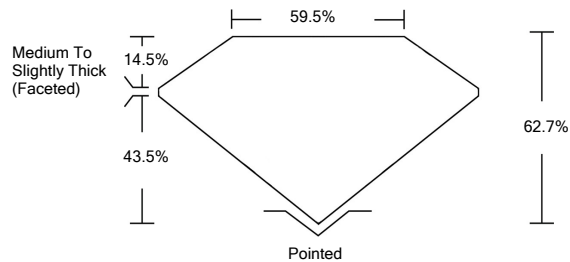
LABORATORY GROWN DIAMOND REPORT

February 21, 2022	
IGI Report Number	LG516275466
Description	LABORATORY GROWN DIAMOND
Shape and Cutting Style	PEAR BRILLIANT
Measurements	12.84 X 8.23 X 5.16 MM
GRADING RESULTS	
Carat Weight	3.21 CARATS
Color Grade	G
Clarity Grade	VVS 2
ADDITIONAL GRADING INFORMATION	
Polish	EXCELLENT
Symmetry	EXCELLENT
Fluorescence	NONE
Inscription(s)	LABGROWN IGI LG516275466

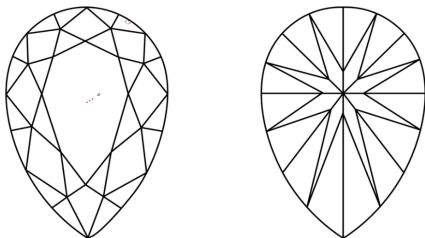
Comments: This Laboratory Grown Diamond was created by Chemical Vapor Deposition (CVD) growth process and may include post-growth treatment.
Type IIa

LG516275466

PROPORTIONS



CLARITY CHARACTERISTICS



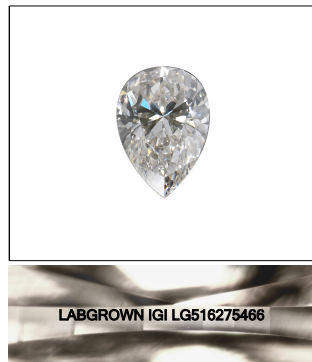
KEY TO SYMBOLS

Red symbols indicate internal characteristics.
Green symbols indicate external characteristics.

LABORATORY GROWN
DIAMOND REPORT

GRADING SCALES

COLOR GRADING SCALE	CL		NC		FT		VLT		LT	
	COLORLESS D-F		NEAR COLORLESS G-J		FAINT K-M		VERY LIGHT N-R		LIGHT S-Z	
CLARITY (10x) GRADING SCALE	FL IF		VVS		VS		SI		I	
	FLAWLESS INTERNALLY FLAWLESS		VERY VERY FLAWLESS INCLUDED		VERY SLIGHTLY INCLUDED		SLIGHTLY INCLUDED		INCLUDED	

LASERSCRIBESM

Sample Image Used

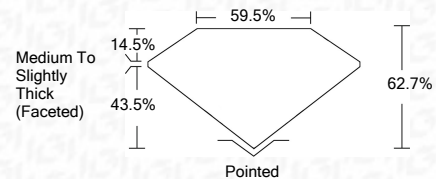


© IGI 2020, International Gemological Institute

FD - 10 20

LABORATORY GROWN DIAMOND REPORT

February 21, 2022	
IGI Report Number	LG516275466
Description	LABORATORY GROWN DIAMOND
Shape and Cutting Style	PEAR BRILLIANT
Measurements	12.84 X 8.23 X 5.16 MM
GRADING RESULTS	
Carat Weight	3.21 CARATS
Color Grade	G
Clarity Grade	VVS 2



ADDITIONAL GRADING INFORMATION

Polish	EXCELLENT
Symmetry	EXCELLENT
Fluorescence	NONE
Inscription(s)	LABGROWN IGI LG516275466

Comments: This Laboratory Grown Diamond was created by Chemical Vapor Deposition (CVD) growth process and may include post-growth treatment.
Type IIa



IGI

February 21, 2022	IGI Report No LG51627468	PEAR BRILLANT	12.81 X 8.23 X 5.16 MM	3.21 CARATS
Carat Weight	Color Grade	G	VVS 2	
Clarity Grade	Depth	Table	59.5%	
Culet	Symmetry	Girdle	Medium To Slightly Thick (Feetted)	Poined
Fluorescence	Inscription(s)			EXCELLENT
				NONE
Comments:				LABGROWN IGI LG51627468
This Laboratory Grown Diamond was created by implanting nitrogen in a CVD growth process and may require post-growth treatment.				
Type Ia				