



## LABORATORY GROWN DIAMOND REPORT

Comments: As Grown - No indication of post-growth treatment.  
This Laboratory Grown Diamond was created by High Pressure High Temperature (HPHT) growth process.  
Type II

Diagram illustrating the proportions of a diamond-shaped object (likely a gemstone or tool head) with the following dimensions:

- Top width: 70.5%
- Top thickness: 15.5%
- Bottom thickness: 50.5%
- Overall height: 70.2%

The object is labeled "Medium To Slightly Thick" on the left and "Pointed" at the bottom.

## CLARITY CHARACTERISTICS

## KEY TO SYMBOLS

Red symbols indicate internal characteristics.  
Green symbols indicate external characteristics.

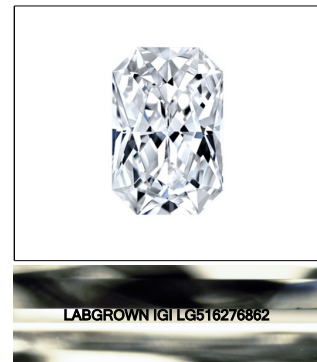
# LABORATORY GROWN DIAMOND REPORT

## GRADING SCALES

COLOR GRADING SCALE	CL		NC		FT		VLT		LT	
	COLORLESS D-F		NEAR COLORLESS G-J		FAINT K-M		VERY LIGHT N-R		LIGHT S-Z	

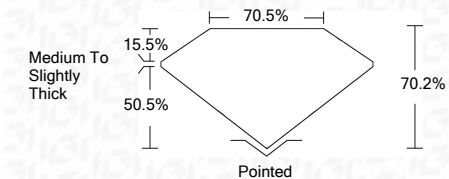
CLARITY (10x) GRADING SCALE	FL		IF		VVS		VS		SI		I	
	FLAWLESS INTERNALLY FLAWLESS		VERY VERY SLIGHTLY INCLUDED		VERY SLIGHTLY INCLUDED		SLIGHTLY INCLUDED		INCLUDED			



**LASERSCRIBE<sup>SM</sup>**  
Sample Image Used

LABORATORY GROWN DIAMOND REPORT

February 15, 2022	
IGI Report Number	LG516276862
Description	LABORATORY GROWN DIAMOND
Shape and Cutting Style	CUT CORNERED RECTANGULAR MODIFIED BRILLIANT
Measurements	6.86 X 4.93 X 3.46 MM
GRADING RESULTS	
Carat Weight	1.04 CARAT
Color Grade	D
Clarity Grade	VS 1



ADDITIONAL GRADING INFORMATION	
Polish	EXCELLENT
Symmetry	EXCELLENT
Fluorescence	NONE
Inscription(s)	LABGROWN IGI LG516276862

Comments: As Grown - No indication of post-growth treatment.  
This Laboratory Grown Diamond was created by High Pressure High Temperature (HPHT) growth process.  
Type II



IGI

