



**ELECTRONIC COPY**

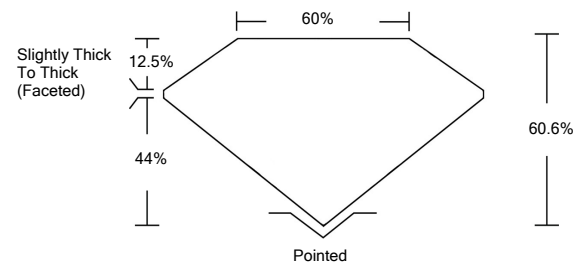
## LABORATORY GROWN DIAMOND REPORT

February 27, 2022	
IGI Report Number	LG517200030
Description	LABORATORY GROWN DIAMOND
Shape and Cutting Style	OVAL BRILLIANT
Measurements	11.55 X 8.23 X 4.99 MM
GRADING RESULTS	
Carat Weight	3.00 CARATS
Color Grade	G
Clarity Grade	SI 1
ADDITIONAL GRADING INFORMATION	
Polish	EXCELLENT
Symmetry	EXCELLENT
Fluorescence	NONE
Inscription(s)	LABGROWN IGI LG517200030

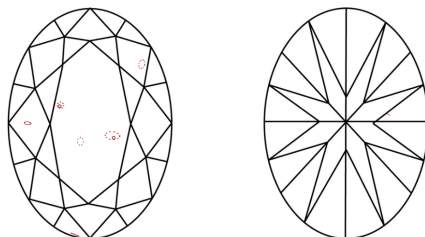
Comments: This Laboratory Grown Diamond was created by Chemical Vapor Deposition (CVD) growth process and may include post-growth treatment.  
Type IIa

LG517200030

## PROPORTIONS



## CLARITY CHARACTERISTICS



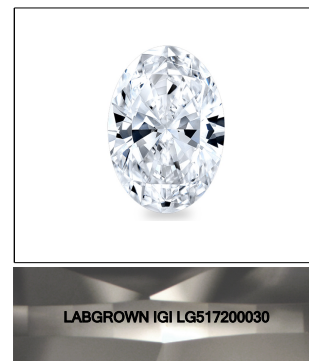
### KEY TO SYMBOLS

Red symbols indicate internal characteristics.  
Green symbols indicate external characteristics.

LABORATORY GROWN  
DIAMOND REPORT

## GRADING SCALES

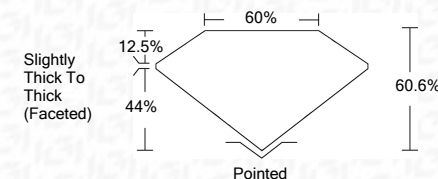
COLOR GRADING SCALE	CL		NC		FT		VLT		LT	
	COLORLESS D-F		NEAR COLORLESS G-J		FAINT K-M		VERY LIGHT N-R		LIGHT S-Z	
CLARITY (10x) GRADING SCALE	FL IF		VVS		VS		SI		I	
	FLAWLESS INTERNALLY FLAWLESS		VERY VERY SLIGHTLY INCLUDED		VERY SLIGHTLY INCLUDED		SLIGHTLY INCLUDED		INCLUDED	

LASERSCRIBE<sup>SM</sup>

Sample Image Used



February 27, 2022	
IGI Report Number	LG517200030
Description	LABORATORY GROWN DIAMOND
Shape and Cutting Style	OVAL BRILLIANT
Measurements	11.55 X 8.23 X 4.99 MM
GRADING RESULTS	
Carat Weight	3.00 CARATS
Color Grade	G
Clarity Grade	SI 1



### ADDITIONAL GRADING INFORMATION

Polish	EXCELLENT
Symmetry	EXCELLENT
Fluorescence	NONE
Inscription(s)	LABGROWN IGI LG517200030

Comments: This Laboratory Grown Diamond was created by Chemical Vapor Deposition (CVD) growth process and may include post-growth treatment.  
Type IIa



-February 27, 2022
IIGI Report No LGS17200030
OVAL BRILLIANT
11.15X 8.23 X 4.98 MM
Carat Weight
Color Grade
G SI 1
Clarity Grade
Depth
60.6%
60%
Slightly Thick To Thin (Faceted)
Poined
Culet
Polish
Excellent
Symmetry
Excellent
Fluorescence
Inscription(s)
NONE
LABGROWN IGI
LGS17200030
Comments:
This Laboratory Grown Diamond was created by Chemical Vapor Deposition (CVD) growth process and may include post-growth treatment.
Type Ia

This Laboratory Grown Diamond was created by Chemical Vapor Deposition (CVD) growth process and may include post-growth treatment.



THIS DOCUMENT WAS PRODUCED WITH THE FOLLOWING SECURITY MEASURES: SPECIAL DOCUMENT PAPER, INK SCREENS, WATERMARK, BACKGROUND DESIGNS, HOLOGRAM AND OTHER SECURITY FEATURES NOT LISTED AND DO EXCEED DOCUMENT SECURITY INDUSTRY GUIDELINE