



ELECTRONIC COPY

LABORATORY GROWN DIAMOND REPORT

February 21, 2022

IGI Report Number **LG517203106**

Description	LABORATORY GROWN DIAMOND
Shape and Cutting Style	ROUND BRILLIANT

Measurements	7.60 - 7.65 X 4.62 MM
--------------	-----------------------

GRADING RESULTS

Carat Weight	1.66 CARAT
Color Grade	D
Clarity Grade	VS 1
Cut Grade	IDEAL

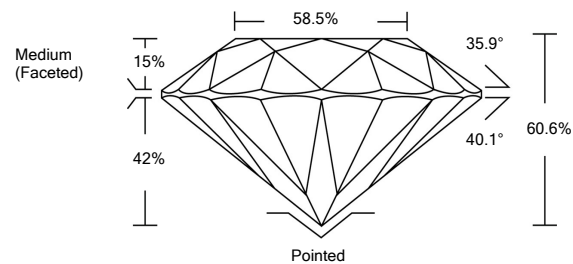
ADDITIONAL GRADING INFORMATION

Polish	EXCELLENT
Symmetry	EXCELLENT
Fluorescence	NONE
Inscription(s)	LABGROWN IGI LG517203106

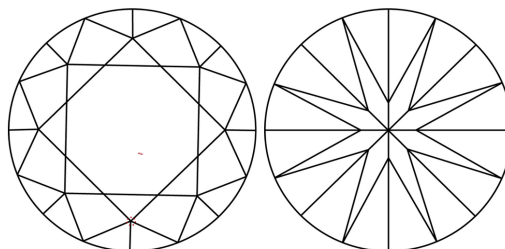
Comments: As Grown - No indication of post-growth treatment.
This Laboratory Grown Diamond was created by High Pressure High Temperature (HPHT) growth process.
Type II

LG517203106

PROPORTIONS



CLARITY CHARACTERISTICS

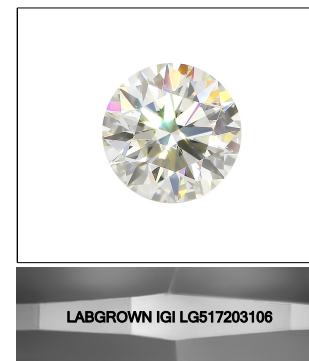


KEY TO SYMBOLS

Red symbols indicate internal characteristics.
Green symbols indicate external characteristics.

GRADING SCALES

COLOR GRADING SCALE	CL		NC		FT		VLT		LT	
	COLORLESS D-F		NEAR COLORLESS G-J		FAINT K-M		VERY LIGHT N-R		LIGHT S-Z	
CLARITY (10x) GRADING SCALE	FL IF		VVS		VS		SI		I	
	FLAWLESS INTERNALLY FLAWLESS		VERY VERY SLIGHTLY INCLUDED		VERY SLIGHTLY INCLUDED		SLIGHTLY INCLUDED		INCLUDED	

LASERSCRIBESM

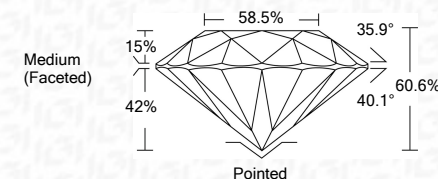
Sample Image Used



February 21, 2022	
IGI Report Number	LG517203106
Description	LABORATORY GROWN DIAMOND
Shape and Cutting Style	ROUND BRILLIANT
Measurements	7.60 - 7.65 X 4.62 MM

GRADING RESULTS

Carat Weight	1.66 CARAT
Color Grade	D
Clarity Grade	VS 1
Cut Grade	IDEAL



ADDITIONAL GRADING INFORMATION

Polish	EXCELLENT
Symmetry	EXCELLENT
Fluorescence	NONE
Inscription(s)	LABGROWN IGI LG517203106

Comments: As Grown - No indication of post-growth treatment.
This Laboratory Grown Diamond was created by High Pressure High Temperature (HPHT) growth process.
Type II



February 21, 2022	
IGI Report No. LG57203106	
ROUND BRILLIANT	
6.80 - 7.65 X 4.62 MM	
Carat Weight	1.66 CARAT
Color Grade	D
Clarity Grade	VS1
Cut Grade	IDEAL
Depth	60.6%
Table	60.6%
Girdle	Medium (Faceted)
Culet	Pointed
Polish	EXCELLENT
Symmetry	EXCELLENT
Fluorescence	NONE
Inclusions (Comments):	LARGESOME / CL LG57203106
As Grown - No indication of post-growth treatment.	
Primary Crown Diamond was treated by high temperature (HPHT) growth process.	
Type II	

