



**ELECTRONIC COPY**

## LABORATORY GROWN DIAMOND REPORT

February 22, 2022	
IGI Report Number	LG517212876
Description	LABORATORY GROWN DIAMOND
Shape and Cutting Style	ROUND BRILLIANT
Measurements	8.20 - 8.22 X 4.86 MM
GRADING RESULTS	
Carat Weight	2.00 CARATS
Color Grade	D
Clarity Grade	SI 1
Cut Grade	EXCELLENT
ADDITIONAL GRADING INFORMATION	
Polish	EXCELLENT
Symmetry	EXCELLENT
Fluorescence	NONE
Inscription(s)	LABGROWN IGI LG517212876

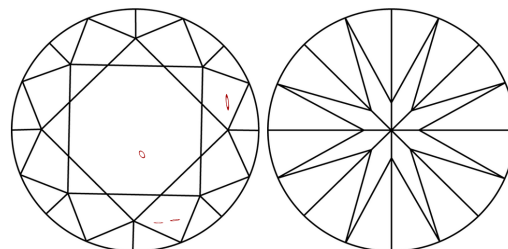
Comments: As Grown - No indication of post-growth treatment.  
This Laboratory Grown Diamond was created by High Pressure High Temperature (HPHT) growth process.  
Type II

Diagram illustrating the proportions of a faceted diamond. The proportions are defined by percentages and angles:

- Table width: 57%
- Table angle: 32.4°
- Depth: 42%
- Pavilion angle: 40°
- Height: 59.2%
- Crown thickness: 13.5%

The diagram also includes the text "Medium To Slightly Thick (Faceted)" and "Pointed".

## CLARITY CHARACTERISTICS



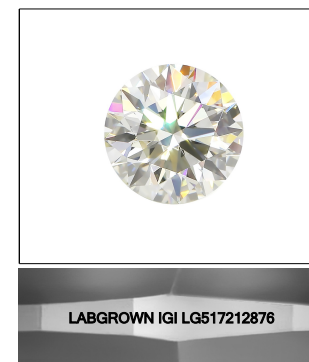
## KEY TO SYMBOLS

Red symbols indicate internal characteristics.  
Green symbols indicate external characteristics.

LABORATORY GROWN  
DIAMOND REPORT

## GRADING SCALES

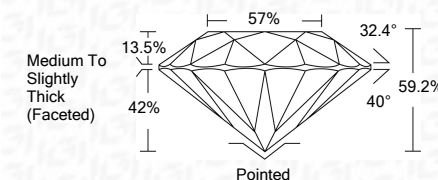
COLOR GRADING SCALE	CL		NC		FT		VLT		LT	
	COLORLESS D-F		NEAR COLORLESS G-J		FAINT K-M		VERY LIGHT N-R		LIGHT S-Z	
CLARITY (10x) GRADING SCALE	FL	IF	VVS		VS		SI		I	
	FLAWLESS INTERNALLY		VERY VERY SLIGHTLY INCLUDED		VERY SLIGHTLY INCLUDED		SLIGHTLY INCLUDED		INCLUDED	

LASERSCRIBE<sup>SM</sup>

Sample Image Used



February 22, 2022	
IGI Report Number	LG517212876
Description	LABORATORY GROWN DIAMOND
Shape and Cutting Style	ROUND BRILLIANT
Measurements	8.20 - 8.22 X 4.86 MM
GRADING RESULTS	
Carat Weight	2.00 CARATS
Color Grade	D
Clarity Grade	SI 1
Cut Grade	EXCELLENT



### ADDITIONAL GRADING INFORMATION

Polish	EXCELLENT
Symmetry	EXCELLENT
Fluorescence	NONE
Inscription(s)	LABGROWN IGI LG517212876

Comments: As Grown - No indication of post-growth treatment.  
This Laboratory Grown Diamond was created by High Pressure High Temperature (HPHT) growth process.  
Type II



January 22, 2022	IGI Report No. LG5712378
ROUND BRILLIANT	
2.20 - 2.22 X 4.88 MM	
Carat Weight	2.00 CARATS
Color Grade	D
Clarity Grade	S1
Cut Grade	EXCELLENT
Depth	59.2%
Table	57%
Girdle	Medium to Slightly Thick (Faceted)
Culet	Pointed
Polish	EXCELLENT
Symmetry	EXCELLENT
Fluorescence	NONE
Comments (Inclusions):	LARGES (C) LG5712378
As Grown - No indication of post-growth treatment.	
Primary Green Diamond was treated by high temperature (HPHT) growth process.	
Type II	

