



ELECTRONIC COPY

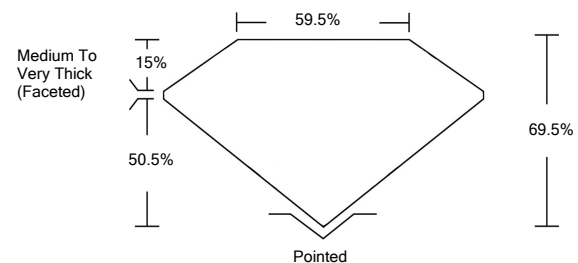
LABORATORY GROWN DIAMOND REPORT

| | |
|---------------------------------------|-------------------------------------|
| March 3, 2022 | |
| IGI Report Number | LG517227205 |
| Description | LABORATORY GROWN DIAMOND |
| Shape and Cutting Style | CUSHION BRILLIANT |
| Measurements | 9.76 X 7.25 X 5.04 MM |
| GRADING RESULTS | |
| Carat Weight | 3.07 CARATS |
| Color Grade | I |
| Clarity Grade | VS 2 |
| ADDITIONAL GRADING INFORMATION | |
| Polish | EXCELLENT |
| Symmetry | EXCELLENT |
| Fluorescence | NONE |
| Inscription(s) | LABGROWN IGI LG517227205 |

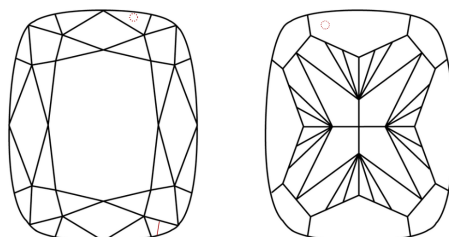
Comments: This Laboratory Grown Diamond was created by Chemical Vapor Deposition (CVD) growth process and may include post-growth treatment.
Type IIa

LG517227205

PROPORTIONS



CLARITY CHARACTERISTICS

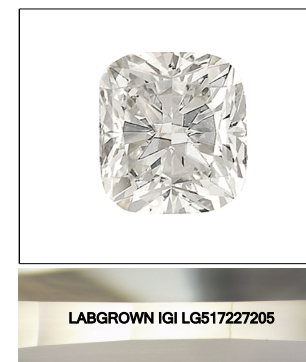


KEY TO SYMBOLS

Red symbols indicate internal characteristics.
Green symbols indicate external characteristics.

GRADING SCALES

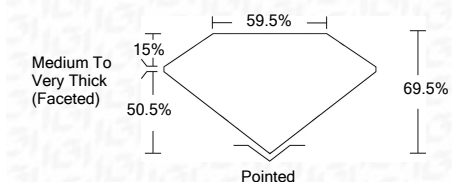
| | | | | | | |
|-----------------------------|------------------------------|-----------------------------|------------------------|-------------------|-----------|----------|
| COLOR GRADING SCALE | CL | NC | FT | VLT | LT | |
| | COLORLESS D-F | NEAR COLORLESS G-J | FAINT K-M | VERY LIGHT N-R | LIGHT S-Z | |
| CLARITY (10x) GRADING SCALE | FL | IF | VVS | VS | SI | I |
| | FLAWLESS INTERNALLY FLAWLESS | VERY VERY SLIGHTLY INCLUDED | VERY SLIGHTLY INCLUDED | SLIGHTLY INCLUDED | INCLUDED | INCLUDED |



LASERSCRIBESM

Sample Image Used

| | |
|-------------------------|-------------------------------------|
| March 3, 2022 | |
| IGI Report Number | LG517227205 |
| Description | LABORATORY GROWN DIAMOND |
| Shape and Cutting Style | CUSHION BRILLIANT |
| Measurements | 9.76 X 7.25 X 5.04 MM |
| GRADING RESULTS | |
| Carat Weight | 3.07 CARATS |
| Color Grade | I |
| Clarity Grade | VS 2 |



ADDITIONAL GRADING INFORMATION

| | |
|----------------|---------------------------------|
| Polish | EXCELLENT |
| Symmetry | EXCELLENT |
| Fluorescence | NONE |
| Inscription(s) | LABGROWN IGI LG517227205 |

Comments: This Laboratory Grown Diamond was created by Chemical Vapor Deposition (CVD) growth process and may include post-growth treatment.
Type IIa



IGI

| | |
|----------------------------|---------------------------------------|
| March 3, 2022 | |
| IGI Report No. LG517227205 | |
| CUSHION BRILLIANT | |
| 9.76 X 7.25 X 5.04 MM | |
| Carat Weight | 3.07 CARATS |
| Color Grade | I |
| Clarity Grade | VS 2 |
| Depth | 69.5% |
| Table | 15.0% |
| Girdle | Medium To Very Thick (Faceted) |
| Culet | Pointed |
| Polish | EXCELLENT |
| Symmetry | EXCELLENT |
| Fluorescence | NONE |
| Inscription(s) | LABGROWN IGI LG517227205 |
| Comments: | |

This Laboratory Grown Diamond was created by Chemical Vapor Deposition (CVD) growth process and may include post-growth treatment.
Type IIa