



LABORATORY GROWN DIAMOND REPORT

March 1, 2022	
IGI Report Number	LG517284555
Description	LABORATORY GROWN DIAMOND
Shape and Cutting Style	ROUND BRILLIANT
Measurements	7.39 - 7.44 X 4.53 MM
GRADING RESULTS	
Carat Weight	1.54 CARAT
Color Grade	D
Clarity Grade	SI 1
Cut Grade	IDEAL

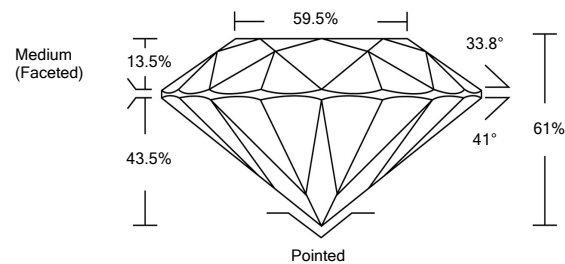
ADDITIONAL GRADING INFORMATION

Polish	EXCELLENT
Symmetry	EXCELLENT
Fluorescence	NONE
Inscription(s)	LABGROWN IGI LG517284555

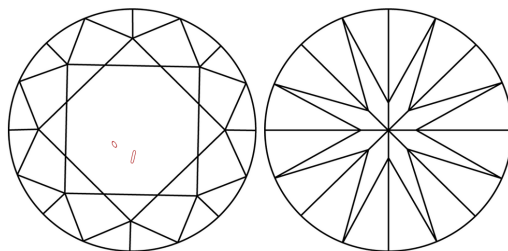
Comments: As Grown - No indication of post-growth treatment.
This Laboratory Grown Diamond was created by High Pressure High Temperature (HPHT) growth process.
Type II

LG517284555

PROPORTIONS



CLARITY CHARACTERISTICS

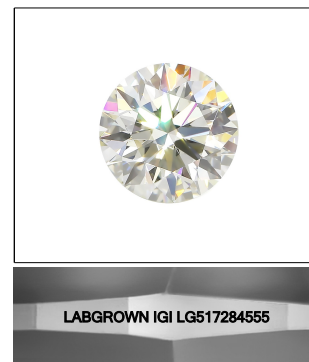


KEY TO SYMBOLS

Red symbols indicate internal characteristics.
Green symbols indicate external characteristics.

GRADING SCALES

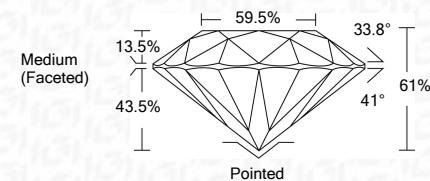
COLOR GRADING SCALE	CL		NC		FT		VLT		LT	
	COLORLESS D-F		NEAR COLORLESS G-J		FAINT K-M		VERY LIGHT N-R		LIGHT S-Z	
CLARITY (10x) GRADING SCALE	FL	IF	VVS		VS		SI		I	
	FLAWLESS Internally Flawless		VERY VERY Slightly Included		VERY Slightly Included		SLIGHTLY Included		Included	

LASERSCRIBESM

Sample Image Used

LABORATORY GROWN DIAMOND REPORT

March 1, 2022	
IGI Report Number	LG517284555
Description	LABORATORY GROWN DIAMOND
Shape and Cutting Style	ROUND BRILLIANT
Measurements	7.39 - 7.44 X 4.53 MM
GRADING RESULTS	
Carat Weight	1.54 CARAT
Color Grade	D
Clarity Grade	SI 1
Cut Grade	IDEAL



ADDITIONAL GRADING INFORMATION

Polish	EXCELLENT
Symmetry	EXCELLENT
Fluorescence	NONE
Inscription(s)	LABGROWN IGI LG517284555

Comments: As Grown - No indication of post-growth treatment.
This Laboratory Grown Diamond was created by High Pressure High Temperature (HPHT) growth process.
Type II



March 1, 2022	IGI Report No. LG81728455
ROUND BRILLIANT	
1.54 CARAT	
Color Grade	D
Clarity Grade	SI 1
Cut Grade	IDEAL
Depth	61%
Table	59.5%
Girdle	Medium (Faceted)
Culet	Pointed
Polish	EXCELLENT
Symmetry	EXCELLENT
Fluorescence	NONE
Proportions (mm)	LABGROWN IGI LG81728455
Comments:	
As Grown - No indication of post-growth treatment.	
This Laboratory Grown Diamond was created by High Pressure High Temperature (HPHT)	
Type IIa	

