



ELECTRONIC COPY

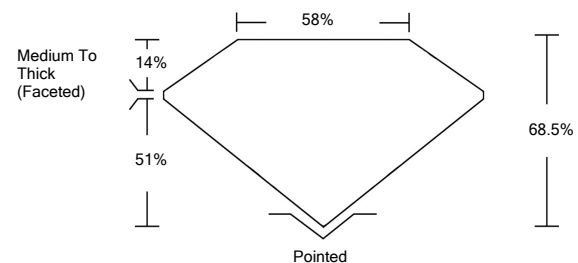
LABORATORY GROWN DIAMOND REPORT

March 21, 2022	
IGI Report Number	LG519239221
Description	LABORATORY GROWN DIAMOND
Shape and Cutting Style	CUSHION BRILLIANT
Measurements	7.34 X 6.38 X 4.37 MM
GRADING RESULTS	
Carat Weight	1.52 CARAT
Color Grade	D
Clarity Grade	SI 1
ADDITIONAL GRADING INFORMATION	
Polish	EXCELLENT
Symmetry	EXCELLENT
Fluorescence	NONE
Inscription(s)	LABGROWN IGI LG519239221

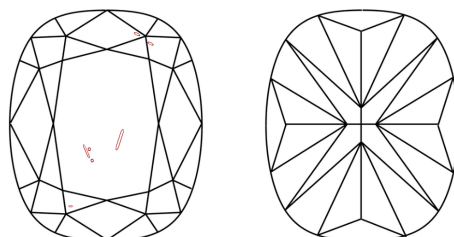
Comments: As Grown - No indication of post-growth treatment.
This Laboratory Grown Diamond was created by High Pressure High Temperature (HPHT) growth process. Type II

LG519239221

PROPORTIONS



CLARITY CHARACTERISTICS

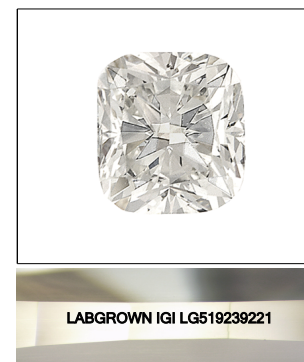


KEY TO SYMBOLS

Red symbols indicate internal characteristics.
Green symbols indicate external characteristics.

GRADING SCALES

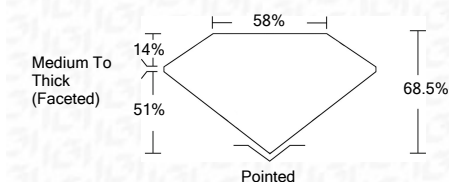
COLOR GRADING SCALE	CL	NC	FT	VLT	LT	
	COLORLESS D-F	NEAR COLORLESS G-J	FAINT K-M	VERY LIGHT N-R	LIGHT S-Z	
CLARITY (10x) GRADING SCALE	FL	IF	VVS	VS	SI	I
	FLAWLESS INTERNALLY FLAWLESS	VERY VERY SLIGHTLY INCLUDED	VERY SLIGHTLY INCLUDED	SLIGHTLY INCLUDED	INCLUDED	



LASERSCRIBESM

Sample Image Used

March 21, 2022	
IGI Report Number	LG519239221
Description	LABORATORY GROWN DIAMOND
Shape and Cutting Style	CUSHION BRILLIANT
Measurements	7.34 X 6.38 X 4.37 MM
GRADING RESULTS	
Carat Weight	1.52 CARAT
Color Grade	D
Clarity Grade	SI 1



ADDITIONAL GRADING INFORMATION

Polish	EXCELLENT
Symmetry	EXCELLENT
Fluorescence	NONE
Inscription(s)	LABGROWN IGI LG519239221

Comments: As Grown - No indication of post-growth treatment.
This Laboratory Grown Diamond was created by High Pressure High Temperature (HPHT) growth process. Type II



IGI



March 21, 2022	
IGI Report No. LG519239221	
CUSHION BRILLIANT	
7.34 X 6.38 X 4.37 MM	
Carat Weight	1.52 CARAT
Color Grade	D
Clarity Grade	SI 1
Depth	68.5%
Table	58%
Girdle	Medium To Thick (Faceted)
Culet	Pointed
Polish	EXCELLENT
Symmetry	EXCELLENT
Fluorescence	NONE
Inscription(s)	LABGROWN IGI LG519239221
Comments:	As Grown - No indication of post-growth treatment. This Laboratory Grown Diamond was created by High Pressure High Temperature (HPHT) growth process. Type II