



ELECTRONIC COPY

LABORATORY GROWN DIAMOND REPORT

April 1, 2022

IGI Report Number **LG522225372**

Description	LABORATORY GROWN DIAMOND
Shape and Cutting Style	ROUND BRILLIANT

Measurements	7.62 - 7.64 X 4.79 MM
--------------	-----------------------

GRADING RESULTS

Carat Weight	1.70 CARAT
Color Grade	F
Clarity Grade	VS 1
Cut Grade	EXCELLENT

ADDITIONAL GRADING INFORMATION

Polish	EXCELLENT
Symmetry	EXCELLENT
Fluorescence	NONE
Inscription(s)	LABGROWN IGI LG522225372

Comments: This Laboratory Grown Diamond was created by Chemical Vapor Deposition (CVD) growth process and may include post-growth treatment.
Type IIa

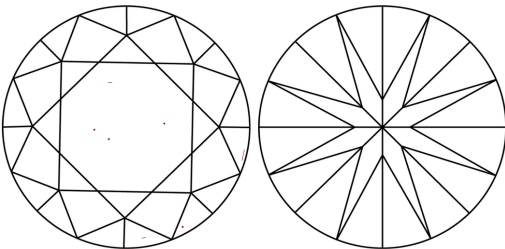
PROPORTIONS

Diagram illustrating the proportions of a diamond, labeled LG522225372. The proportions are defined as follows:

- Table Width: 56%
- Crown Height: 14.5%
- Pavilion Depth: 44.5%
- Girdle Thickness: 33.6% (top) and 41.5% (bottom)
- Total Height: 62.8%
- Pointed Bottom

Additional text: "Medium To Slightly Thick Faceted")

CLARITY CHARACTERISTICS

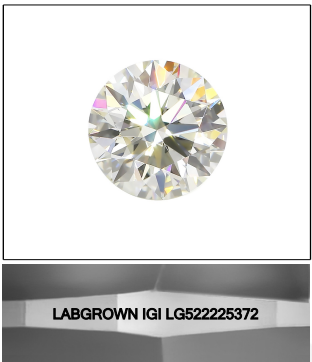


KEY TO SYMBOLS

Red symbols indicate internal characteristics.
Green symbols indicate external characteristics.

GRADING SCALES

COLOR GRADING SCALE	CL		NC		FT		VLT		LT	
	COLORLESS D-F		NEAR COLORLESS G-J		FAINT K-M		VERY LIGHT N-R		LIGHT S-Z	
CLARITY (10x) GRADING SCALE	FL IF		VVS		VS		SI		I	
	FLAWLESS INTERNALLY FLAWLESS		VERY VERY SLIGHTLY INCLUDED		VERY SLIGHTLY INCLUDED		SLIGHTLY INCLUDED		INCLUDED	



LASERSCRIBESM
Sample Image Used



© IGI 2020, International Gemological Institute

FD - 10 20

THIS DOCUMENT WAS PRODUCED WITH THE FOLLOWING SECURITY MEASURES: SPECIAL DOCUMENT PAPER, INK SCREENS, WATERMARK BACKGROUND DESIGNS, HOLOGRAM AND OTHER SECURITY FEATURES NOT LISTED AND DO EXCEED DOCUMENT SECURITY INDUSTRY GUIDELINES.

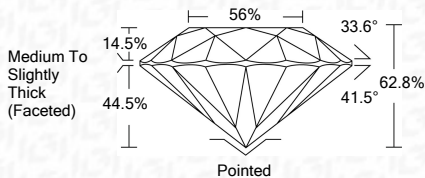
LABORATORY GROWN DIAMOND REPORT

April 1, 2022	
IGI Report Number	LG522225372
Description	LABORATORY GROWN

Shape and Cutting Style	ROUND BRILLIANT
Measurements	7.62 - 7.64 X 4.79 MM

GRADING RESULTS

Carat Weight	1.70 CARAT
Color Grade	F
Clarity Grade	VS 1
Cut Grade	EXCELLENT



ADDITIONAL GRADING INFORMATION

Polish	EXCELLENT
Symmetry	EXCELLENT
Fluorescence	NONE
Inscription(s)	LABGROWN IGI LG522225372

Comments: This Laboratory Grown Diamond was created by Chemical Vapor Deposition (CVD) growth process and may include post-growth treatment.
Type IIa



IGI

API Report No	L682268372
ROUND BRILLIANT	
Carat Weight	1.70 CARAT
Color Grade	F
Clarity Grade	VS 1
Cut Grade	EXCELLENT
Depth	62.8%
Table	56%
Girdle	Medium To Slightly Thick (Feetied)
Culet	Pointed
Polish	EXCELLENT
Symmetry	EXCELLENT
Fluorescence	NONE
Inscriptions	LABGROWN IGI L682268372
Comments:	This Laboratory Grown Diamond was created by Chemical Vapor Deposition (CVD) growth process and may include post-growth treatment.
Type Iia	