



ELECTRONIC COPY

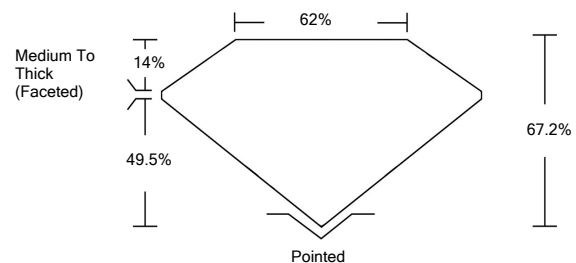
LABORATORY GROWN DIAMOND REPORT

March 21, 2022	
IGI Report Number	LG522233854
Description	LABORATORY GROWN DIAMOND
Shape and Cutting Style	SQUARE CUSHION BRILLIANT
Measurements	6.91 X 6.58 X 4.42 MM
GRADING RESULTS	
Carat Weight	1.55 CARAT
Color Grade	D
Clarity Grade	SI 1
ADDITIONAL GRADING INFORMATION	
Polish	EXCELLENT
Symmetry	EXCELLENT
Fluorescence	NONE
Inscription(s)	LABGROWN IGI LG522233854

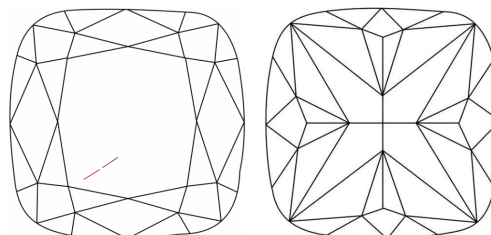
Comments: As Grown - No indication of post-growth treatment.
This Laboratory Grown Diamond was created by High Pressure High Temperature (HPHT) growth process. Type II

LG522233854

PROPORTIONS



CLARITY CHARACTERISTICS

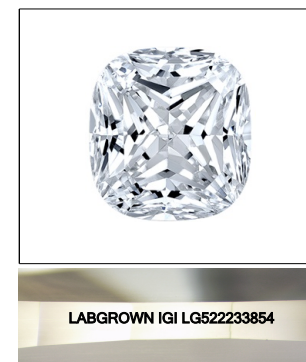


KEY TO SYMBOLS

Red symbols indicate internal characteristics.
Green symbols indicate external characteristics.

GRADING SCALES

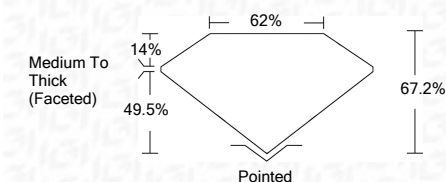
COLOR GRADING SCALE	CL	NC	FT	VL	LT	
	COLORLESS D-F	NEAR COLORLESS G-J	FAINT K-M	VERY LIGHT N-R	LIGHT S-Z	
CLARITY (10x) GRADING SCALE	FL	IF	VVS	VS	SI	I
	FLAWLESS INTERNALLY FLAWLESS	VERY VERY SLIGHTLY INCLUDED	VERY SLIGHTLY INCLUDED	SLIGHTLY INCLUDED	INCLUDED	



LASERSCRIBESM

Sample Image Used

March 21, 2022	
IGI Report Number	LG522233854
Description	LABORATORY GROWN DIAMOND
Shape and Cutting Style	SQUARE CUSHION BRILLIANT
Measurements	6.91 X 6.58 X 4.42 MM
GRADING RESULTS	
Carat Weight	1.55 CARAT
Color Grade	D
Clarity Grade	SI 1



ADDITIONAL GRADING INFORMATION	
Polish	EXCELLENT
Symmetry	EXCELLENT
Fluorescence	NONE
Inscription(s)	LABGROWN IGI LG522233854

Comments: As Grown - No indication of post-growth treatment.
This Laboratory Grown Diamond was created by High Pressure High Temperature (HPHT) growth process. Type II



IGI

March 21, 2022	IGI Report No. LG522233854	1.55 CARAT	D
SQUARE CUSHION BRILLIANT	6.91 X 6.58 X 4.42 MM	67.2%	SI 1
Carat Weight	Medium To Thick (Faceted)	62%	Pointed
Color Grade	EXCELLENT	EXCELLENT	EXCELLENT
Clarity Grade	EXCELLENT	EXCELLENT	EXCELLENT
Depth	NONE	NONE	NONE
Table	LABGROWN IGI	LABGROWN IGI	LABGROWN IGI
Girdle	LG522233854	LG522233854	LG522233854
Culet			
Polish			
Symmetry			
Fluorescence			
Inscription(s)			
Comments:	As Grown - No indication of post-growth treatment. Laboratory Grown Diamond was created by High Pressure High Temperature (HPHT) growth process. Type II		

