



ELECTRONIC COPY

LABORATORY GROWN DIAMOND REPORT

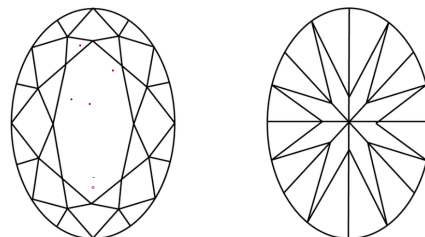
March 25, 2022	
IGI Report Number	LG522239156
Description	LABORATORY GROWN DIAMOND
Shape and Cutting Style	OVAL BRILLIANT
Measurements	10.16 X 7.32 X 4.61 MM
GRADING RESULTS	
Carat Weight	2.16 CARATS
Color Grade	F
Clarity Grade	VS 2
ADDITIONAL GRADING INFORMATION	
Polish	EXCELLENT
Symmetry	EXCELLENT
Fluorescence	NONE
Inscription(s)	LABGROWN IGI LG522239156

Comments: This Laboratory Grown Diamond was created by Chemical Vapor Deposition (CVD) growth process and may include post-growth treatment.
Type IIa

Diagram illustrating the proportions of a diamond-shaped facet (LG522239156). The facet is defined by the following dimensions and labels:

- Top Width:** 61.5%
- Left Side Proportions:**
 - Top section: 13.5%
 - Bottom section: 44.5%
 - Label: "Medium To Slightly Thick Faceted)" with a bracket indicating the combined height of the two sections.
- Right Side Proportion:** 63%
- Bottom Shape:** Pointed

CLARITY CHARACTERISTICS



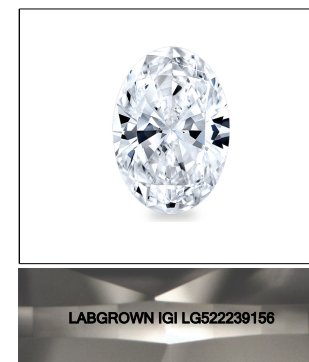
KEY TO SYMBOLS

Red symbols indicate internal characteristics.
Green symbols indicate external characteristics.

LABORATORY GROWN
DIAMOND REPORT

GRADING SCALES

COLOR GRADING SCALE	CL		NC		FT		VLT		LT	
	COLORLESS D-F		NEAR COLORLESS G-J		FAINT K-M		VERY LIGHT N-R		LIGHT S-Z	
CLARITY (10x) GRADING SCALE	FL IF		VVS		VS		SI		I	
	FLAWLESS INTERNALLY FLAWLESS		VERY VERY SLIGHTLY INCLUDED		VERY SLIGHTLY INCLUDED		SLIGHTLY INCLUDED		INCLUDED	

LASERSCRIBESM

Sample Image Used

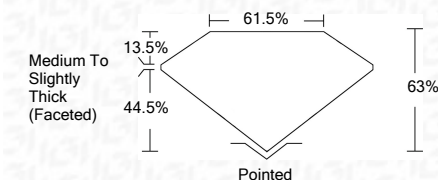


© IGI 2020, International Gemological Institute

FD - 10 20

LABORATORY GROWN DIAMOND REPORT

March 25, 2022	
IGI Report Number	LG522239156
Description	LABORATORY GROWN DIAMOND
Shape and Cutting Style	OVAL BRILLIANT
Measurements	10.16 X 7.32 X 4.61 MM
GRADING RESULTS	
Carat Weight	2.16 CARATS
Color Grade	F
Clarity Grade	VS 2



ADDITIONAL GRADING INFORMATION

Polish	EXCELLENT
Symmetry	EXCELLENT
Fluorescence	NONE
Inscription(s)	LABGROWN IGI LG522239156

Comments: This Laboratory Grown Diamond was created by Chemical Vapor Deposition (CVD) growth process and may include post-growth treatment.
Type IIa



March 25, 2022	IGI Report No. LG22239166	
COVAL BRILLIANT	10.18 x 7.32 x 4.81 MM	2.16 CARATS
Carat Weight	Color Grade	F 2
Clarity Grade	Depth	VS 2
Table		63%
Girdle		61.5%
Polish	Medium to Slightly Thick (Faceted)	
Symmetry		Excellent
Fluorescence		EXCELLENT
Inscriptions		NONE
Comments:		LABGROWN (IGI LG22239166)
This Laboratory Grown Diamond was created by Chemical Vapor Deposition (CVD) growth treatment and may include post-growth treatment.		
Type Ila		