



LABORATORY GROWN DIAMOND REPORT

ADDITIONAL GRADING INFORMATION	
Polish	EXCELLENT
Symmetry	EXCELLENT
Fluorescence	NONE
Inscription(s)	LABGROWN IGI LG523279921

Comments: As Grown - No indication of post-growth treatment.
This Laboratory Grown Diamond was created by High Pressure High Temperature (HPHT) growth process.
Type II

PROPORTIONS

Diagram illustrating the proportions of a diamond, labeled LG523279921. The proportions are defined by the following measurements:

- Table width: 57.5%
- Crown angle: 33.3°
- Pavilion angle: 40.6°
- Crown height: 14%
- Pavilion height: 43%
- Total height: 60.7%

The diamond is described as "Medium To Lightly Thick Faceted" and "Pointed".

CLARITY CHARACTERISTICS

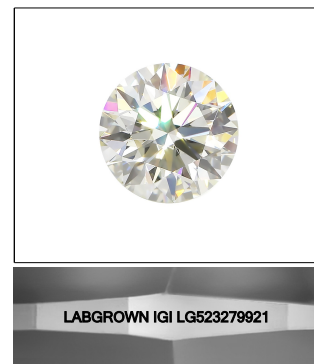
KEY TO SYMBOLS

Red symbols indicate internal characteristics.
Green symbols indicate external characteristics.

LABORATORY GROWN
DIAMOND REPORT

GRADING SCALES

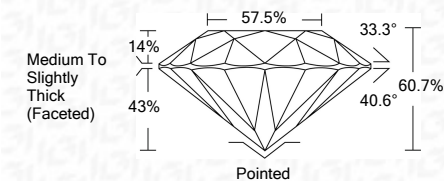
COLOR GRADING SCALE	CL		NC	FT	VL	LT
	COLORLESS D-F		NEAR COLORLESS G-J	FAINT K-M	VERY LIGHT N-R	LIGHT S-Z
CLARITY (10x) GRADING SCALE	FL	IF	VVS	VS	SI	I
	FLAWLESS INTERNALLY FLAWLESS		VERY VERY SLIGHTLY INCLUDED	VERY SLIGHTLY INCLUDED	SLIGHTLY INCLUDED	INCLUDED



LASERSCRIBESM
Sample Image Used

LABORATORY GROWN DIAMOND REPORT

April 1, 2022	
IGI Report Number	LG523279921
Description	LABORATORY GROWN DIAMOND
Shape and Cutting Style	ROUND BRILLIANT
Measurements	8.35 - 8.39 X 5.08 MM
GRADING RESULTS	
Carat Weight	2.19 CARAT(S)
Color Grade	D
Clarity Grade	SI 1
Cut Grade	IDEAL



ADDITIONAL GRADING INFORMATION	
Polish	EXCELLENT
Symmetry	EXCELLENT
Fluorescence	NONE
Inscription(s)	LABGROWN IGI LG523279921

Comments: As Grown - No indication of post-growth treatment.
This Laboratory Grown Diamond was created by High Pressure High Temperature (HPHT) growth process.
Type II



IGI

April 1, 2022	IGI Report No. LG523279621	ROUND BRILLIANT	2.19 CARATS	D	SI 1	IDEAL	60.7%	57.5%	Medium To Slightly Thick (faceted)	Pointed	EXCELLENT	EXCELLENT	NONE	LARGELY IGI LG523279621	Comments: As Grown - No Indication of post-growth treatment. This Laboratory Grown Diamond was created by High Pressure High Temperature (HPHT) growth process. Type II
	8.35 - 8.39 X 5.08 MM			Color Grade	Clarity Grade	Cut Grade	Depth	Table	Grille	Culet	Polish	Symmetry	Fluorescence	Inscription(s)	

