



ELECTRONIC COPY

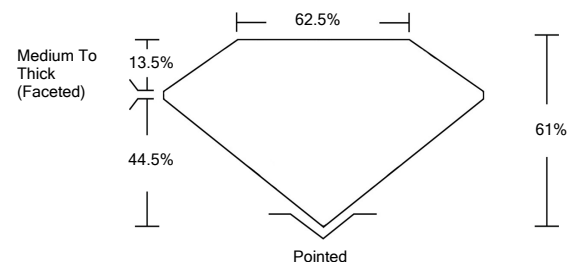
LABORATORY GROWN DIAMOND REPORT

April 23, 2022	
IGI Report Number	LG524210623
Description	LABORATORY GROWN DIAMOND
Shape and Cutting Style	HEART BRILLIANT
Measurements	7.21 X 8.39 X 5.12 MM
GRADING RESULTS	
Carat Weight	1.83 CARAT
Color Grade	D
Clarity Grade	VS 1
ADDITIONAL GRADING INFORMATION	
Polish	EXCELLENT
Symmetry	EXCELLENT
Fluorescence	NONE
Inscription(s)	LABGROWN IGI LG524210623

Comments: As Grown - No indication of post-growth treatment.
This Laboratory Grown Diamond was created by High Pressure High Temperature (HPHT) growth process. Type II

LG524210623

PROPORTIONS



CLARITY CHARACTERISTICS

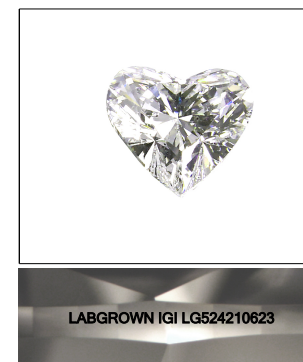


KEY TO SYMBOLS

Red symbols indicate internal characteristics.
Green symbols indicate external characteristics.

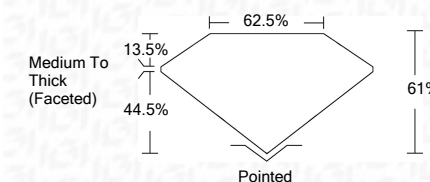
GRADING SCALES

COLOR GRADING SCALE	CL	NC	FT	VL	LT	
	COLORLESS D-F	NEAR COLORLESS G-J	FAINT K-M	VERY LIGHT N-R	LIGHT S-Z	
CLARITY (10x) GRADING SCALE	FL	IF	VVS	VS	SI	I
	FLAWLESS INTERNALLY FLAWLESS	VERY VERY SLIGHTLY INCLUDED	VERY SLIGHTLY INCLUDED	SLIGHTLY INCLUDED	INCLUDED	



LASERSCRIBESM
Sample Image Used

April 23, 2022	
IGI Report Number	LG524210623
Description	LABORATORY GROWN DIAMOND
Shape and Cutting Style	HEART BRILLIANT
Measurements	7.21 X 8.39 X 5.12 MM
GRADING RESULTS	
Carat Weight	1.83 CARAT
Color Grade	D
Clarity Grade	VS 1



ADDITIONAL GRADING INFORMATION	
Polish	EXCELLENT
Symmetry	EXCELLENT
Fluorescence	NONE
Inscription(s)	LABGROWN IGI LG524210623

Comments: As Grown - No indication of post-growth treatment.
This Laboratory Grown Diamond was created by High Pressure High Temperature (HPHT) growth process. Type II



IGI

April 23, 2022	
IGI Report No. LG524210623	
HEART BRILLIANT	
7.21 X 8.39 X 5.12 MM	
Carat Weight	1.83 CARAT
Color Grade	D
Clarity Grade	VS 1
Depth	61%
Table	62.5%
Grille	Medium To Thick (Faceted)
Culet	Pointed
Polish	EXCELLENT
Symmetry	EXCELLENT
Fluorescence	NONE
Inscription(s)	LABGROWN IGI LG524210623
Comments:	As Grown - No indication of post-growth treatment. This Laboratory Grown Diamond was created by High Pressure High Temperature (HPHT) growth process. Type II

