



LABORATORY GROWN DIAMOND REPORT

May 6, 2022

IGI Report Number **LG526290340**

Description	LABORATORY GROWN DIAMOND
-------------	-----------------------------

Shape and Cutting Style **HEART BRILLIANT**

Measurements **7.62 X 8.87 X 5.18 MM**

GRADING RESULTS

Carat Weight **2.03 CARATS**

Color Grade **D**

Clarity Grade VS 1

ADDITIONAL GRADING INFORMATION

Polish **EXCELLENT**

Symmetry **EXCELLENT**

Fluorescence **NONE**

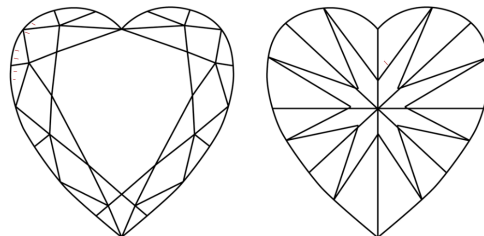
Inscription(s) **LABGROWN IGI LG526290340**

Comments: As Grown - No indication of post-growth treatment.
This Laboratory Grown Diamond was created by High
Pressure High Temperature (HPHT) growth process.
Type II

Diagram illustrating the proportions of a diamond-shaped object (likely a gemstone) with the following dimensions:

- Top width: 61.5%
- Left side width: 13%
- Left side height: 42%
- Right side height: 58.4%
- Bottom width: Pointed

CLARITY CHARACTERISTICS

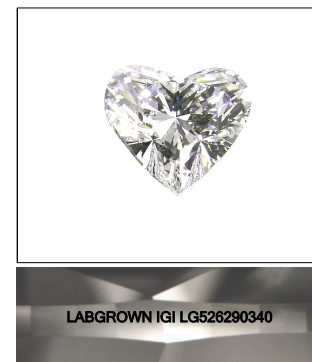


KEY TO SYMBOLS

Red symbols indicate internal characteristics.
Green symbols indicate external characteristics.

GRADING SCALES

COLOR GRADING SCALE	CL		NC		FT		VLT		LT	
	COLORLESS D-F		NEAR COLORLESS G-J		FAINT K-M		VERY LIGHT N-R		LIGHT S-Z	
CLARITY (10x) GRADING SCALE	FL IF		VVS		VS		SI		I	
	FLAWLESS INTERNALLY FLAWLESS		VERY VERY SLIGHTLY INCLUDED		VERY SLIGHTLY INCLUDED		SLIGHTLY INCLUDED		INCLUDED	

LASERSCRIBESM

Sample Image Used



© IGI 2020, International Gemological Institute

FD - 10 20

LABORATORY GROWN DIAMOND REPORT

May 6, 2022

IGI Report Number **LG526290340**

Description **LABORATORY GROWN DIAMOND**

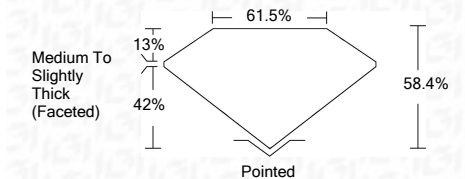
Shape and Cutting Style **HEART BRILLIANT**

Measurements **7.62 X 8.87 X 5.18 MM**

GRADING RESULTS

Carat Weight **2.03 CARATS**

Color Grade **D**

Clarity Grade **VS 1**

ADDITIONAL GRADING INFORMATION

Polish **EXCELLENT**

Symmetry **EXCELLENT**

Fluorescence **NONE**

Inscription(s) **LABGROWN IGI LG526290340**

Comments: As Grown - No indication of post-growth treatment.
This Laboratory Grown Diamond was created by High Pressure High Temperature (HPHT) growth process.
Type II



May 6, 2022	IGI Report No. LG52620340		2.03 CARATS		D	
HEART BRILLIANT	6.62 X 8.87 X 5.18 MM		VS 1		84.4%	
Carat Weight	Color Grade		81.5%		Medium to Slightly Thick (Feetted)	
Clarity Grade	Depth		Culet		Pointed	
Table	Symmetry		EXCELLENT		EXCELLENT	
Girdle	Fluorescence		NONE		LAGROWN IGI LG52620340	
	Inscriptions(s)		Comments:			
As Grown - No indication of post-growth.						
The Laboratory Grown Diamond was created by High Pressure High Temperature (HPHT) growth process.						
Type II						

www.igi.org