



ELECTRONIC COPY

LABORATORY GROWN DIAMOND REPORT

| | |
|-------------------------|-----------------------------|
| May 26, 2022 | |
| IGI Report Number | LG530208888 |
| Description | LABORATORY GROWN DIAMOND |
| Shape and Cutting Style | ROUND BRILLIANT |
| Measurements | 8.92 - 8.97 X 5.47 MM |

GRADING RESULTS

| | |
|---------------|-------------|
| Carat Weight | 2.68 CARATS |
| Color Grade | F |
| Clarity Grade | VS 1 |
| Cut Grade | IDEAL |

ADDITIONAL GRADING INFORMATION

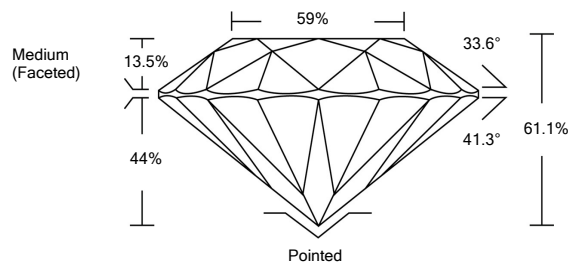
| | |
|--------------|-----------|
| Polish | EXCELLENT |
| Symmetry | EXCELLENT |
| Fluorescence | NONE |

Inscription(s) **LABGROWN IGI LG530208888**

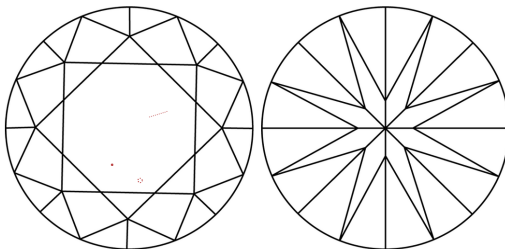
Comments: This Laboratory Grown Diamond was created by Chemical Vapor Deposition (CVD) growth process and may include post-growth treatment.

LG530208888

PROPORTIONS



CLARITY CHARACTERISTICS

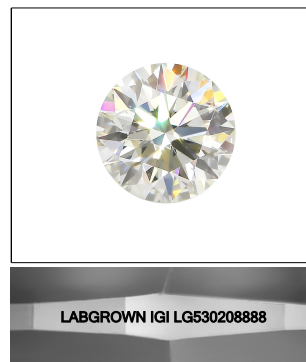


KEY TO SYMBOLS

Red symbols indicate internal characteristics.
Green symbols indicate external characteristics.

GRADING SCALES

| COLOR GRADING SCALE | CL | | NC | FT | VLT | LT |
|-----------------------------|------------------------------|----|-----------------------------|------------------------|-------------------|-----------|
| | COLORLESS D-F | | NEAR COLORLESS G-J | FAINT K-M | VERY LIGHT N-R | LIGHT S-Z |
| CLARITY (10x) GRADING SCALE | FL | IF | VVS | VS | SI | I |
| | FLAWLESS INTERNALLY FLAWLESS | | VERY VERY SLIGHTLY INCLUDED | VERY SLIGHTLY INCLUDED | SLIGHTLY INCLUDED | INCLUDED |

LASERSCRIBESM

Sample Image Used



© IGI 2020, International Gemological Institute

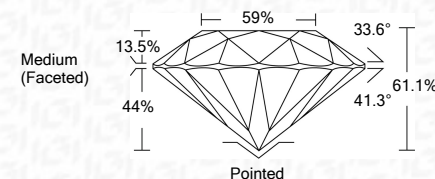
FD - 10 20

LABORATORY GROWN DIAMOND REPORT

| | |
|-------------------------|-----------------------------|
| May 26, 2022 | |
| IGI Report Number | LG53020888 |
| Description | LABORATORY GROWN DIAMOND |
| Shape and Cutting Style | ROUND BRILLIANT |
| Measurements | 8.92 - 8.97 X 5.47 MM |

GRADING RESULTS

| | |
|---------------|-------------|
| Carat Weight | 2.68 CARATS |
| Color Grade | F |
| Clarity Grade | VS 1 |
| Cut Grade | IDEAL |



ADDITIONAL GRADING INFORMATION

| | |
|----------------|--------------------------|
| Polish | EXCELLENT |
| Symmetry | EXCELLENT |
| Fluorescence | NONE |
| Inscription(s) | LABGROWN IGI LG530208888 |

Comments: This Laboratory Grown Diamond was created by Chemical Vapor Deposition (CVD) growth process and may include post-growth treatment.
Type IIa



IG

| | |
|--------------------------|--|
| May 26, 2022 | |
| IGI Report No LG53028888 | |
| ROUND BRILLANT | |
| 2.68 CARATS | |
| G-9 - G-7 X 5.47 MM | VS 1 |
| Carat Weight | IDEAL |
| Color Grade | 61.1% |
| F | 59% |
| | Medium (Faceted) |
| | Pointed |
| Cut | EXCELLENT |
| Polish | EXCELLENT |
| Symmetry | EXCELLENT |
| Fluorescence | NONE |
| Inscriptions(s) | LABGROWN IGI LG53028888 |
| Comments: | This Laboratory Grown Diamond was created by Chemical Vapor Deposition (CVD) growth treatment and may include post growth treatment. |
| Type Ia | |

www.igi.org