



ELECTRONIC COPY

LABORATORY GROWN DIAMOND REPORT

May 24, 2022
IGI Report Number LG530210703
Description LABORATORY GROWN DIAMOND
Shape and Cutting Style ROUND BRILLIANT
Measurements 6.71 - 6.72 X 4.17 MM

GRADING RESULTS

Carat Weight 1.16 CARAT
Color Grade F
Clarity Grade VS 1
Cut Grade IDEAL

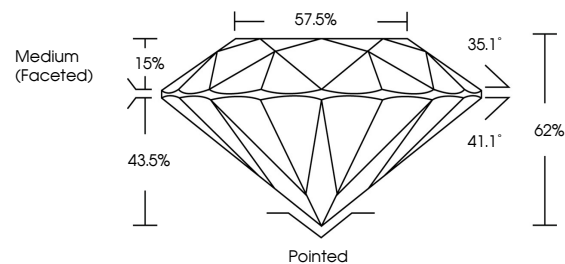
ADDITIONAL GRADING INFORMATION

Polish EXCELLENT
Symmetry EXCELLENT
Fluorescence NONE
Inscription(s) LABGROWN (IGI) LG530210703

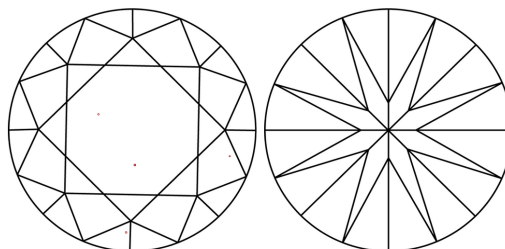
Comments: This Laboratory Grown Diamond was created by Chemical Vapor Deposition (CVD) growth process and may include post-growth treatment. Type IIa

LG530210703

PROPORTIONS



CLARITY CHARACTERISTICS



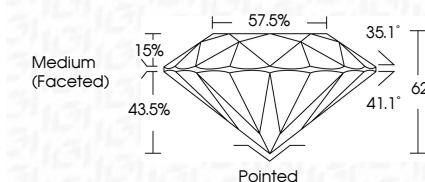
KEY TO SYMBOLS

Red symbols indicate internal characteristics.
Green symbols indicate external characteristics.

May 24, 2022
IGI Report Number LG530210703
Description LABORATORY GROWN DIAMOND
Shape and Cutting Style ROUND BRILLIANT
Measurements 6.71 - 6.72 X 4.17 MM
GRADING RESULTS
Carat Weight 1.16 CARAT
Color Grade F
Clarity Grade VS 1
Cut Grade IDEAL

GRADING SCALES

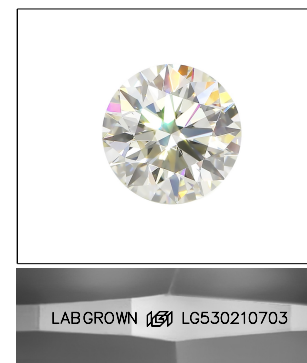
Table showing color grading scale (CL to LT) and clarity (10x) grading scale (FL to I).



ADDITIONAL GRADING INFORMATION

Polish EXCELLENT
Symmetry EXCELLENT
Fluorescence NONE
Inscription(s) LABGROWN (IGI) LG530210703

Comments: This Laboratory Grown Diamond was created by Chemical Vapor Deposition (CVD) growth process and may include post-growth treatment. Type IIa



LASERSCRIBE SM

Sample Image Used



IGI

May 24, 2022
IGI Report No. IGS530210703
ROUND BRILLIANT
6.71 - 6.72 X 4.17 MM
Carat Weight 1.16 CARAT
Color Grade F
Clarity Grade VS 1
Cut Grade IDEAL
Depth 62%
Table 57.5%
Girdle Medium (Faceted)
Culet Pointed
Polish EXCELLENT
Symmetry EXCELLENT
Fluorescence NONE
Inscription(s) LABGROWN (IGI) LG530210703
Comments: This Laboratory Grown Diamond was created by Chemical Vapor Deposition (CVD) growth process and may include post-growth treatment. Type IIa