



**ELECTRONIC COPY**

## LABORATORY GROWN DIAMOND REPORT

|                         |                             |
|-------------------------|-----------------------------|
| June 6, 2022            |                             |
| IGI Report Number       | LG532263966                 |
| Description             | LABORATORY GROWN<br>DIAMOND |
| Shape and Cutting Style | ROUND BRILLIANT             |
| Measurements            | 6.70 - 6.75 X 4.25 MM       |

## GRADING RESULTS

|               |            |
|---------------|------------|
| Carat Weight  | 1.20 CARAT |
| Color Grade   | D          |
| Clarity Grade | VVS 2      |
| Cut Grade     | EXCELLENT  |

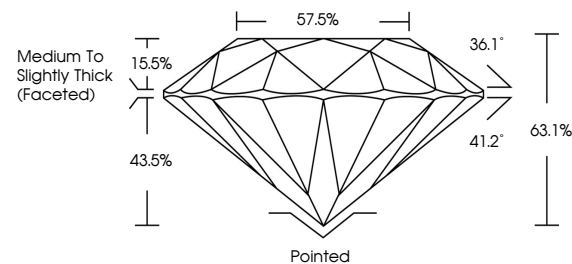
### ADDITIONAL GRADING INFORMATION

|                |                          |
|----------------|--------------------------|
| Polish         | EXCELLENT                |
| Symmetry       | EXCELLENT                |
| Fluorescence   | NONE                     |
| Inscription(s) | LABGROWN 151 LG532263966 |

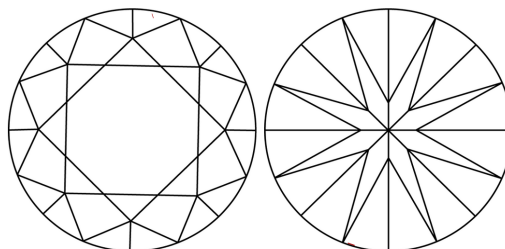
Inscription(s) **LABGROWN 1(3) LG532263966**  
 Comments: As Grown - No indication of post-growth treatment.  
 This Laboratory Grown Diamond was created by High Pressure High Temperature (HPHT) growth process.  
 Type II

LG532263966

## PROPORTIONS



## CLARITY CHARACTERISTICS

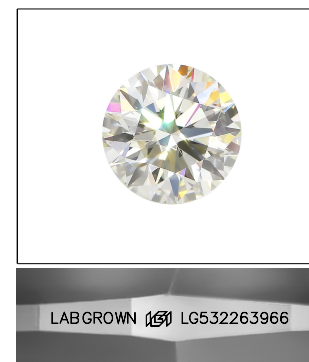


### KEY TO SYMBOLS

Red symbols indicate internal characteristics.  
Green symbols indicate external characteristics.

## GRADING SCALES

|                             |                              |  |                             |  |                        |  |                   |  |           |  |
|-----------------------------|------------------------------|--|-----------------------------|--|------------------------|--|-------------------|--|-----------|--|
| COLOR GRADING SCALE         | CL                           |  | NC                          |  | FT                     |  | VLT               |  | LT        |  |
|                             | COLORLESS D-F                |  | NEAR COLORLESS G-J          |  | FAINT K-M              |  | VERY LIGHT N-R    |  | LIGHT S-Z |  |
| CLARITY (10x) GRADING SCALE | FL IF                        |  | VVS                         |  | VS                     |  | SI                |  | I         |  |
|                             | FLAWLESS INTERNALLY FLAWLESS |  | VERY VERY SLIGHTLY INCLUDED |  | VERY SLIGHTLY INCLUDED |  | SLIGHTLY INCLUDED |  | INCLUDED  |  |

LASERSCRIBE<sup>SM</sup>

Sample Image Used



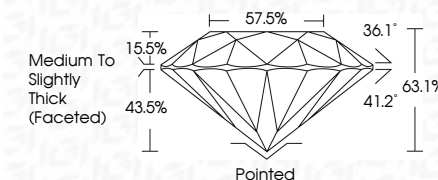
© IGI 2020, International Gemological Institute

FD - 10 20

**www.igi.org**

## LABORATORY GROWN DIAMOND REPORT

|                         |                             |
|-------------------------|-----------------------------|
| June 6, 2022            |                             |
| IGI Report Number       | LG532263966                 |
| Description             | LABORATORY GROWN<br>DIAMOND |
| Shape and Cutting Style | ROUND BRILLIANT             |
| Measurements            | 6.70 - 6.75 X 4.25 MM       |
| <b>GRADING RESULTS</b>  |                             |
| Carat Weight            | 1.20 CARAT                  |
| Color Grade             | D                           |
| Clarity Grade           | VVS 2                       |
| Cut Grade               | EXCELLENT                   |



### ADDITIONAL GRADING INFORMATION

|                |                           |
|----------------|---------------------------|
| Polish         | EXCELLENT                 |
| Symmetry       | EXCELLENT                 |
| Fluorescence   | NONE                      |
| Inscription(s) | LABGROWN (16) LG532263966 |

Comments: As Grown - No indication of post-growth treatment.  
This Laboratory Grown Diamond was created by High Pressure High Temperature (HPHT) growth process.  
Type II



|              |                          |  |                     |  |   |  |
|--------------|--------------------------|--|---------------------|--|---|--|
| June 4, 2022 | GI Report No. LG52265966 |  | 1.20 CARAT          |  | D   |  |
|              | ROUND BRILLIANT          |  | VS2                 |  | EXCELLENT   |  |
|              | 7.07 - 6.75 X 4.25 MM    |  | 63.1%               |  | 57.5%   |  |
|              | Color Grade              |  | Medium to slightly  |  | Thick (footed)  |  |
|              | Clarity Grade            |  | Polished            |  | EXCELLENT   |  |
|              | Cut Grade                |  | EXCELLENT           |  | EXCELLENT   |  |
|              | Depth                    |  | Symmetry            |  | NONE  |  |
|              | Table                    |  | Fluorescence        |  | LABGROWN (GIA)  |  |
|              | Girdle                   |  | Inclusions (if any) |  | LG52265966  |  |
|              |                          |  | Culet               |  | As Grown - No indication of post-growth treatment.  |  |
|              |                          |  | Polish              |  | This Laboratory Growth Diamond was created by High Pressure High Temperature (HPHT) growth process. |  |